



Quality Products. Service Excellence.

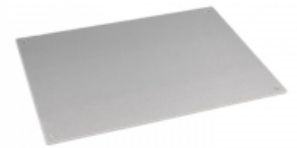
Real Walnut Chassis w/ Aluminum Top *HWCHAS Series*

Key Features:

- Heavy duty construction walnut chassis (see corner detail photo below).
- Top panel available in a choice of natural aluminum or satin black powder paint finish.
- Walnut chassis is 0.778 inches thick (19.8 mm) - corners are produced with wood bracing & dovetail construction methods (see close-up photos below). Designed to handle heavy components.
- Top panel is aluminum for easy modification and thick enough to support heavy transformers without bowing - 0.08" (2 mm) thick. Fully "framed" support from walnut chassis.
- Includes four large round rubber feet (0.75" dia. x 0.56" high) with mounting hardware into inserts to avoid wood damage. Hardware is of proper length to allow use of optional bottom plate.
- 25-packs of replacement screws are available. Part number **SC1441-25** (silver) and **SC1441BK-25** (black)



Photo Features:



Available with a natural aluminum or black powder coated top panel. Aluminum panel is supplied with protective covering (perfect as a layout tool!)

Chassis built with dovetail joinery. Hardware inserts pressed into wood for installation of included screws and accessory bottom panels.

Optional bottom panels available in natural aluminum or with black powder coat.

Chassis

Chassis w/ Black Top Panel	Chassis w/ Aluminum Top Panel	Width	Depth	Height	Black Bottom Panel	Aluminum Bottom Panel
----------------------------	-------------------------------	-------	-------	--------	--------------------	-----------------------

Chassis w/ Black Top Panel	Chassis w/ Aluminum Top Panel	Width	Depth	Height	Black Bottom Panel	Aluminum Bottom Panel
HWCHAS1310BK	HWCHAS1310AL	13.00	10.00	3.00	HW1310BKPL	HW1310ALPL
HWCHAS1710BK	HWCHAS1710AL	17.00	10.00	3.00	HW1710BKPL	HW1710ALPL

25-Pack of Replacement Screws (silver)

Part No.	SC1441-25
----------	-----------

25-Pack of Replacement Screws (black)

Part No.	SC1441BK-25
----------	-------------

Data subject to change without notice

© 2022. Hammond Manufacturing Ltd. All rights reserved.

X-ON Electronics

Largest Supplier of Electrical and Electronic Components

Click to view similar products for [Enclosures, Boxes & Cases](#) category:

Click to view products by [Hammond](#) manufacturer:

Other Similar products are found below :

[585-R-WH-PK](#) [014415](#) [M-10-PLATED](#) [60221-01](#) [60566-01-000](#) [HPL-9VB BATT DOOR](#) [M18-PLTD](#) [M-21-PLATED](#) [63310-01-000](#)
[6711GSKT](#) [71884-29-028](#) [LH45-100 Black](#) [7200B](#) [72868-510-000](#) [CNS-0000 Black](#) [72883-510-000](#) [CNS-0101 Black](#) [72906-510-000](#) [CNS-](#)
[0407 Black](#) [73092-510-000](#) [CNM-0101 Black](#) [73105-510-000](#) [CNL-0101 Black](#) [73108-510-000](#) [CNL-0303 Black](#) [73395-510-039](#) [CNS-0006](#)
[Bone](#) [74257-510-000](#) [CNL-0004](#) [MDC-1183-PLAIN-ALUM](#) [MDC-1183-PTD](#) [MDC-13104-PTD](#) [MDC-321-PTD](#) [MDC-973-PTD](#) [76](#)
[77153-01-028](#) [FLX6030](#) [83535-01-508](#) [90026-501-000](#) [PS36-200](#) [116-508](#) [120-407](#) [120-910](#) [127-908](#) [130-008](#) [1301170079](#) [1322GSKTEP](#)
[1325GSKT3](#) [138-PLAIN](#) [1434-1210](#) [EAS-500 \(BLACK ANO\)](#) [1804RP-RB-PK](#) [190-005](#) [KAB3321 BLACK](#) [KAB3421](#) [2697466](#) [S52213](#)
[2901699](#) [A0645271](#) [A20P20](#) [2106-IR](#)