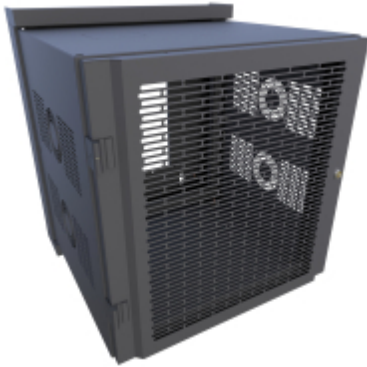




Quality Products. Service Excellence.

Swing-Out Sectional Wall Mount Rack Cabinet *HWM Series*

UL Rated 350 lbs (158 kg) Weight Capacity



Application

The Hammond Wall Mount (HWM) cabinet was designed with the technical professional in mind. Our modern design enables the cabinet to be installed in less time and using fewer installers than similar cabinets of its size. Fabricated from heavy duty steel, the HWM is available in up to 32U, 31.7" overall depth and can support up to 350 lbs of equipment. The HWM is guaranteed not to drop down when the center section is opened. Similar products from other suppliers can drop down when the center section is opened which can result in costly equipment failures due to damages to storage devices. The HWM design prevents the center section from dropping saving you time and money from equipment replacement.

The vented front door and side panels were specifically designed for high capacity servers, switches and power management devices. Optional locking solid doors are available for all sizes.

Features

- Available in two (2) depths and four (4) heights.
- All sizes include either vented 63% perforated front door or smoked window front door.
- Center section features:
 - Heavy duty spring-hinge pin for easy installation and removal.
 - Sides that include two (2) vents and fan grill.
 - Can be installed to swing from left-to-right or right-to-left.
- Rear section features:
 - The side of the rear section includes 2.50" and 2.00" knockouts.
 - The top and bottom of the rear section includes 3.00", 2.00", 1.38" and 1.12" knockouts.
 - Generous cable management lances located on the rear section as well as on mounting rails.
 - Mounting points for outlet strips.
 - Heavy duty keyhole for wall mounting.
 - Large opening in rear for cable access.
- Front locking door and center section keyed the same (optional key available).

Specifications

- 14-gauge welded rear section; 16-gauge center section and doors.
- EIA compliant adjustable depth mounting rails.
- Includes one (1) pair of tapped (10-32) mounting rails.
 - Supports multiple pairs of rails in both tapped and square hole options.
 - Starter pack of **SCREW1032-50** screws.
- Grounding lugs located on top and bottom of the door, center and rear sections.
- UL Listed 2416 load rated for up to 350 lbs (158 kg). Static Load tested to 1,400 lbs (635 kg).
- Rugged sand-textured black powder paint which reduces the look of fingerprints and marks.
- TAA compliant for GSA Schedule purchases.
- RoHS Compliant.



- Manufactured in North America.



Upgrade the cabinet to be dust-resistant with the **HWCF** Cabinet Sealing and Filter Kit.

Accessories

- Vertical Cable Tray
- Horizontal Hinged Cable Manager
- Horizontal Lacing Strip
- Two Post Mounting Clamping Shelf
- Rack Unit Label
- Grounding & Bonding
- PDUs and Outlet Strips
- Rack Panels
- Horizontal Steel Finger Cable Manager
- Universal Rack Shelf
- Magnet Panel Cover
- Fan Kits
- Mounting Hardware



Part No. Vented Door	Part No. Window Door	Overall Dimensions			Rack Units	Mounting (Usable) Dimensions		
		Height	Width	Depth		Height	Width	Depth
HWM2412U20BK	HWM2412U20WDBK	27.75	24.68	25.70	12U	21.00	19.00	23.52
HWM2412U26BK	HWM2412U26WDBK	27.75	24.68	31.70	12U	21.00	19.00	29.52
HWM2420U20BK	HWM2420U20WDBK	41.75	24.68	25.70	20U	35.00	19.00	23.52
HWM2420U26BK	HWM2420U26WDBK	41.75	24.68	31.70	20U	35.00	19.00	29.52
HWM2424U20BK	HWM2424U20WDBK	48.75	24.68	25.70	24U	42.00	19.00	23.52
HWM2424U26BK	HWM2424U26WDBK	48.75	24.68	31.70	24U	42.00	19.00	29.52
HWM2432U20BK	HWM2432U20WDBK	62.75	24.68	25.70	32U	56.00	19.00	23.52

Part No.	Part No.	Overall Dimensions			Rack Units	Mounting (Usable) Dimensions				
		Vented Door	Window Door	Height		Width	Depth	Height	Width	Depth
HWM2432U26BK	HWM2432U26WDBK			62.75	24.68	31.70	32U	56.00	19.00	29.52

Accessories

Cabinet Rack Units	Locking Solid Door	Tapped 10-32 Rail (Pair)	Square Hole Rail (Pair)	Vertical Cable Manager
12U	HWMSD2412UBK	HWMTR12U	HWMSR12U	-
20U	HWMSD2420UBK	HWMTR20U	HWMSR20U	-
24U	HWMSD2424UBK	HWMTR24U	HWMSR24U	VCT42
32U	HWMSD2432UBK	HWMTR32U	HWMSR32U	VCT56

Lock Keyed Differently

Part No.	HWMSLOCK
----------	----------

Tags: **Sectional Wall Mount Rack, Pivoting Rack, Data Wall Cabinet, Dual Hinge, Hinged Swing Gate** *Data subject to change without notice*

© 2021. Hammond Manufacturing Ltd. All rights reserved.

X-ON Electronics

Largest Supplier of Electrical and Electronic Components

Click to view similar products for [Hammond manufacturer](#):

Other Similar products are found below :

[001151](#) [001150-10](#) [PCJ1084CCNLF](#) [PCJ864CCHF](#) [PCJ864CCLF](#) [PCJ864LF](#) [60TYHW](#) [CS1084](#) [CSKO884](#) [CSP4936LG1](#) [CSP5636BK1](#)
[CSP8531LG1](#) [CST374](#) [CST6604](#) [M268-5](#) [CWST1096NK](#) [CWTL2](#) [712](#) [718](#) [728](#) [ESP2416](#) [ESP4236](#) [ESP4824](#) [72WFWG](#) [72ZWFWG](#)
[72ZWHW](#) [732A](#) [733A](#) [735](#) [FAN10A220](#) [MHK3SS](#) [FRCMCH128](#) [FT900TA1220BK](#) [PF32000T12BK24](#) [PF6500AT12LG](#) [PF6600AT12LG](#)
[PHW241210](#) [PHW30208](#) [PHW483616](#) [90BWHW](#) [90YFWG](#) [90YWFW](#) [PJ1084P9](#) [PJ1086RHW](#) [PJ14126RTW](#) [PJ16148RLW](#) [PJ16148TW](#)
[PJ18168RW](#) [PJ242410RLW](#) [PJ242410RTW](#)