



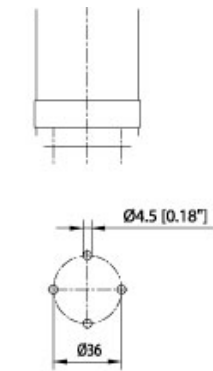
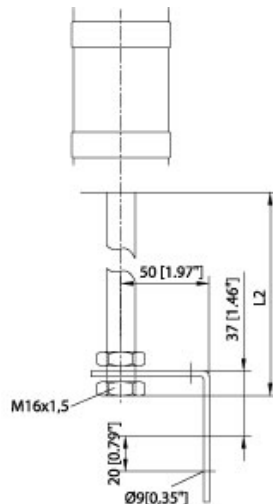
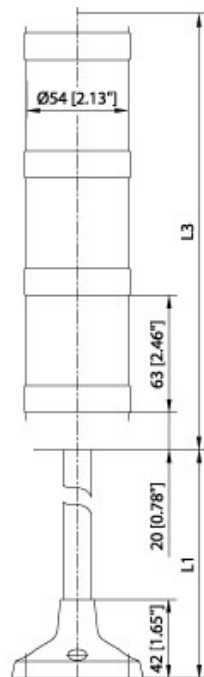
Quality Products. Service Excellence.

Stack Lights *PBR Series*



- Modular design for all indoor and outdoor applications.
- Provides warning signals and displays machine status.
- High level of protection against electric shock with IP 54 rating.
- Separate components for easy ordering to suit every installation application.

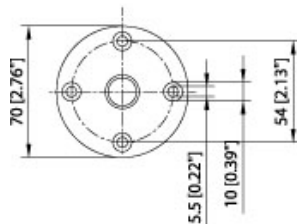
Gallery



Direct Mounting

| Part No. | L3 |
|---------------|-----------------|
| Single module | 107mm (4.21in) |
| 2 modules | 170mm (6.69in) |
| 3 modules | 233mm (9.17in) |
| 4 modules | 296mm (11.65in) |
| 5 modules | 359mm (14.13in) |

Threaded Tubular Stand/Bracket



Tubular Stand/Plinth

Base and Tubes

| Part No. | Description | L1 | L2 |
|-----------|--------------------------------|------|------|
| PBR50BC | Base & End Module | - | - |
| PBR50S100 | Tubular Stand/Plinth | 3.46 | - |
| PBR50S250 | Tubular Stand/Plinth | 9.37 | - |
| PBR50T100 | Threaded tubular stand/bracket | - | 3.07 |

| Part No. | Description | L1 | L2 |
|-----------|--------------------------------|----|-------|
| PBR50T250 | Threaded tubular stand/bracket | - | 8.98 |
| PBR50T400 | Threaded tubular stand/bracket | - | 14.13 |

Modules

| Part No. | Description |
|--------------|-------------------------------------|
| PBR50CLCL | Continuous beam module, transparent |
| PBR50CLYE | Continuous beam module, yellow |
| PBR50CLAM | Continuous beam module, amber |
| PBR50CLRE | Continuous beam module, red |
| PBR50CLGR | Continuous beam module, green |
| PBR50CLBL | Continuous beam module, blue |
| PBR50BLYE24V | Blinking module, yellow |
| PBR50BLRE24V | Blinking module, red |
| PBR50BLGR24V | Blinking module, green |

Gaskets, Bulbs and Accessories

| Part No. | Description |
|-------------|---|
| PBR50MG | Replacement gasket for light module & base module |
| PBR50TG | Replacement gasket for mounting tube with plinth |
| PBR50BG | Replacement gasket for direct mounting IP 65 |
| PBR50LED24 | LED light bulb 24V/BA 15d |
| PBR50LED115 | LED light bulb 115V/BA 15d |
| PBR50L24 | Light bulb 24V DC/BA 15d 7W |
| PBR50L115 | Light bulb 115V CD/BA 15d 7W |
| PBR50LS | Bulb Remover/Installer |

| Modular Data | Continuous Beam | Blinking Light |
|---------------------------------|--|-------------------------------|
| Modular Colors | Yellow, Red, Green, Amber, Blue, Transparent | Yellow, Red, Green |
| Modular Stages | Max. 5 | Max. 5) |
| Angle of Beam | 360 degrees | 360 degrees |
| Percentage Duty Cycle | 1 | 1 |
| Rated Power, max. | 7W | 7W |
| Rated Power with 5 stages | 5W | 5W |
| Lamp Socket | BA 15d | BA 15d |
| Service life of light bulb/tube | approx. 1500h | approx. 1500h |
| AC Voltage Rating | 230 V, 50/60 Hz, -15% to +10% | 230 V, 50/60 Hz, -15% to +10% |
| Current Capacity Rating | 0.035 A | 0.08 A |
| DC Voltage Rating | 24 V, -15% to +20% | 24 V, -15% to +20% |
| Current Capacity Rating | 0.3 A | 0.25 A |

| Other Data | |
|-----------------------|--|
| Protection Rating | IP 54 |
| Operating Temperature | -25 o C to +45 o C |
| Relative Humidity | 0.9 |
| Installation | Vertical or Horizontal |
| | Mounting Stand, tube mounting or direct mounting |
| Accessories | Gasket for light module + basic module IP 65 |
| | Gasket for tubular stand on plinth IP 65 |
| | Gasket for direct mounting IP 65 |
| | Wall bracket with hood |
| Weight of Plinth | Stand mounting (w/o module): approx. 220g |
| | Tube mounting (w/o module): 200g |
| | Direct mounting (w/o module): 180g |

| | |
|-------------------|--|
| Other Data | |
| Materials | Modular: polycarbonate, Plinth: ABS, Tube: stainless steel |

Data subject to change without notice

© 2021. Hammond Manufacturing Ltd. All rights reserved.

X-ON Electronics

Largest Supplier of Electrical and Electronic Components

Click to view similar products for [Racks & Rack Cabinet Accessories](#) category:

Click to view products by [Hammond](#) manufacturer:

Other Similar products are found below :

[CR-1727](#) [M00-PLN](#) [F2420](#) [F2424](#) [8310-1032-SS](#) [9104](#) [PLFF2000](#) [PLFF6000](#) [GP216](#) [PTFA60000LG](#) [H-9163-B](#) [AC220-84-1](#) [HEH050BA](#)
[1427C3](#) [BAS-5104](#) [N-700-2](#) [190-002](#) [HTL10](#) [HTS10](#) [PC-118](#) [PC-780L](#) [PC-79](#) [PC-800](#) [SC4-28](#) [F3024](#) [AKWAMT](#) [PLFF1000](#) [GRPB12PG](#)
[CG3-340S/12](#) [2CWDP36](#) [2CWDP48](#) [2SSHINGE](#) [CP-001BK](#) [CPL19431LG1](#) [R570-004-107](#) [M6123-4007-SS](#) [3730-K](#) [TS170](#) [531300535](#)
[BRX-12290](#) [C4BD3077SBK1](#) [UPS 7-17-14 PLAIN](#) [LP40](#) [5261304-07](#) [CCA26-44-01](#) [706-102](#) [CG3-160G](#) [7112C-PLN ALUM](#) [TS81](#) [7142](#)