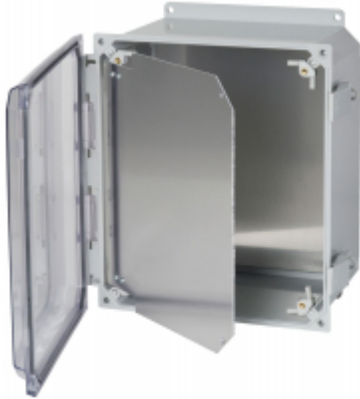




Quality Products. Service Excellence.

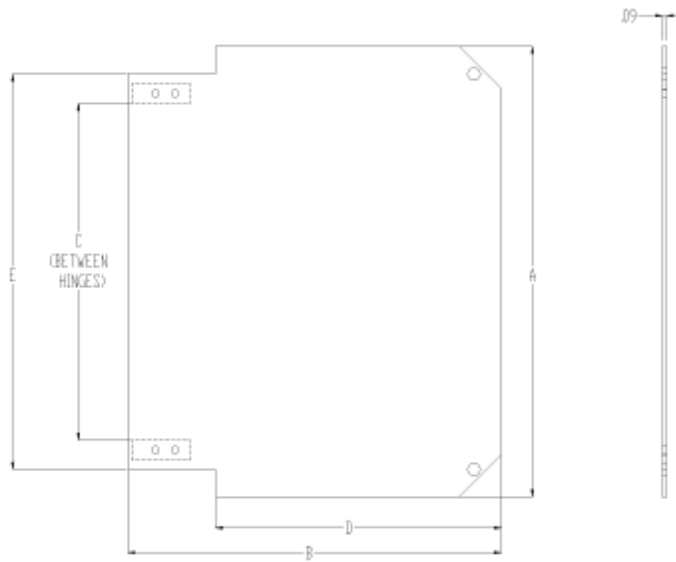
Swing Panel *PCJSP Series*

PCJ Series Accessory



Features

- Hinged aluminum panel installed on corner sliders allowing adjustable depth setting
- Can be installed hinged either right or left swing
- Field installed with no drilling required
- Mounting Hardware Included
- Material thickness 0.09"



HFPP Kit Part No.	Enclosure Base Part No.	A	B	C	D	E
PCJHFPP66	PCJ664	5.44	5.61	2.64	3.13	4.19
PCJHFPP86	PCJ864	7.44	5.61	4.64	3.13	6.19
PCJHFPP88	PCJ884	7.44	7.63	4.64	5.38	6.19
PCJHFPP108	PCJ1084	9.43	7.69	6.63	5.38	8.18
PCJHFPP1210	PCJ12106	11.55	9.58	8.63	7.33	10.13
PCJHFPP1412	PCJ14126	13.10	11.25	10.61	9.00	11.75
PCJHFPP1614	PCJ16148	14.75	12.88	12.33	12.88	13.44
PCJHFPP1816	PCJ181610	16.88	14.88	14.19	14.88	15.44

Replacement Hardware

Part Number	Description
PCJCB4	Corner block set of 4 (for 14"H enclosures and smaller)
PCJCB4L	Corner block set of 4 (for 16" & 18"H enclosures)
PCJHFH	Hinge and screws set of 2

© 2022. Hammond Manufacturing Ltd. All rights reserved.

X-ON Electronics

Largest Supplier of Electrical and Electronic Components

Click to view similar products for [Electrical Enclosure Accessories](#) category:

Click to view products by [Hammond](#) manufacturer:

Other Similar products are found below :

[1307GSKTSC](#) [1335GSKT3](#) [14101FP-PK](#) [BAS-5104](#) [CB-1263-BT](#) [60121-04-028 C-275 Black](#) [AXX2POSTBRCKT](#) [FUPMESK](#)
[1317GSKTSC](#) [DVA.1-30-15-SST-M8-20-55](#) [DVC.1-50-46-15-M10-28-55](#) [DVC.1-10-4,5-8-M4-10-40](#) [DVC.1-10-8-10-M4-10-40](#) [DVC.1-30-22-20-M8-20-40](#) [DVC.2-40-20-48-M8-23-55](#) [DVC.3-95-80-75-M16-55](#) [96126](#) [GN 967-20-40-F-1-ZB](#) [GN 967-45-45-L-2-ZB](#) [JUMO-01-20](#) [52100623](#) [53801100](#) [53801125](#) [430081](#) [430086](#) [GN 4490-ZD-38-1-SR](#) [USRE-20.04](#) [UT-33.3](#) [UT-81.1](#) [DIN 7603-AL-24-29-A](#) [DIN 7603-AL-8-11,5-A](#) [DIN 7603-CU-20-24-A](#) [01-0016.00X2.5 ORING 75FPM BROWN](#) [01-0021.00X2.5 ORING 80FPM BROWN](#) [01-0025.00X1.5 ORING 80FPM BROWN](#) [01-0007.00X2.5 ORING 80FPM BROWN](#) [01-0009.00X3.5 ORING 80FPM BROWN](#) [171 PG29](#) [FG13LH15A700S11](#) [IPV-67101-B](#) [KM-320BK](#) [KM-320G](#) [KM-340G](#) [01-0005.00X1.5 ORING 75FPM BROWN](#) [01-0005.00X2 ORING 80FPM BROWN](#) [01-0005.00X3 ORING 80FPM BROWN](#) [01-0005.94X3.53 ORING 80FPM BROWN](#) [01-0006.00X1.5 ORING 80FPM BROWN](#) [01-0006.00X2.5 ORING 80FPM BROWN](#) [01-0006.00X2 ORING 80FPM BROWN](#)