



Quality Products. Service Excellence.

Type 4X Polyester Junction Box w/ Window PJ Series

Various Door Styles



Application

- Designed for use as instrument enclosures, electric, hydraulic or pneumatic control housings, electrical junction boxes or terminal wiring enclosures.
- Provides outstanding insulation and protection where equipment may be hosed down or be very wet.
- Ideal in applications with high temperatures or highly corrosive environments.

Standards

- UL 508A Type 1, 2, 3, 4, 4X, 12 and 13
- CSA Type 1, 2, 3, 4, 4X, 12 and 13
- Complies with
 - NEMA Type 1, 2, 3, 4, 4X, 12, & 13
 - IEC 60529, IP66

Construction

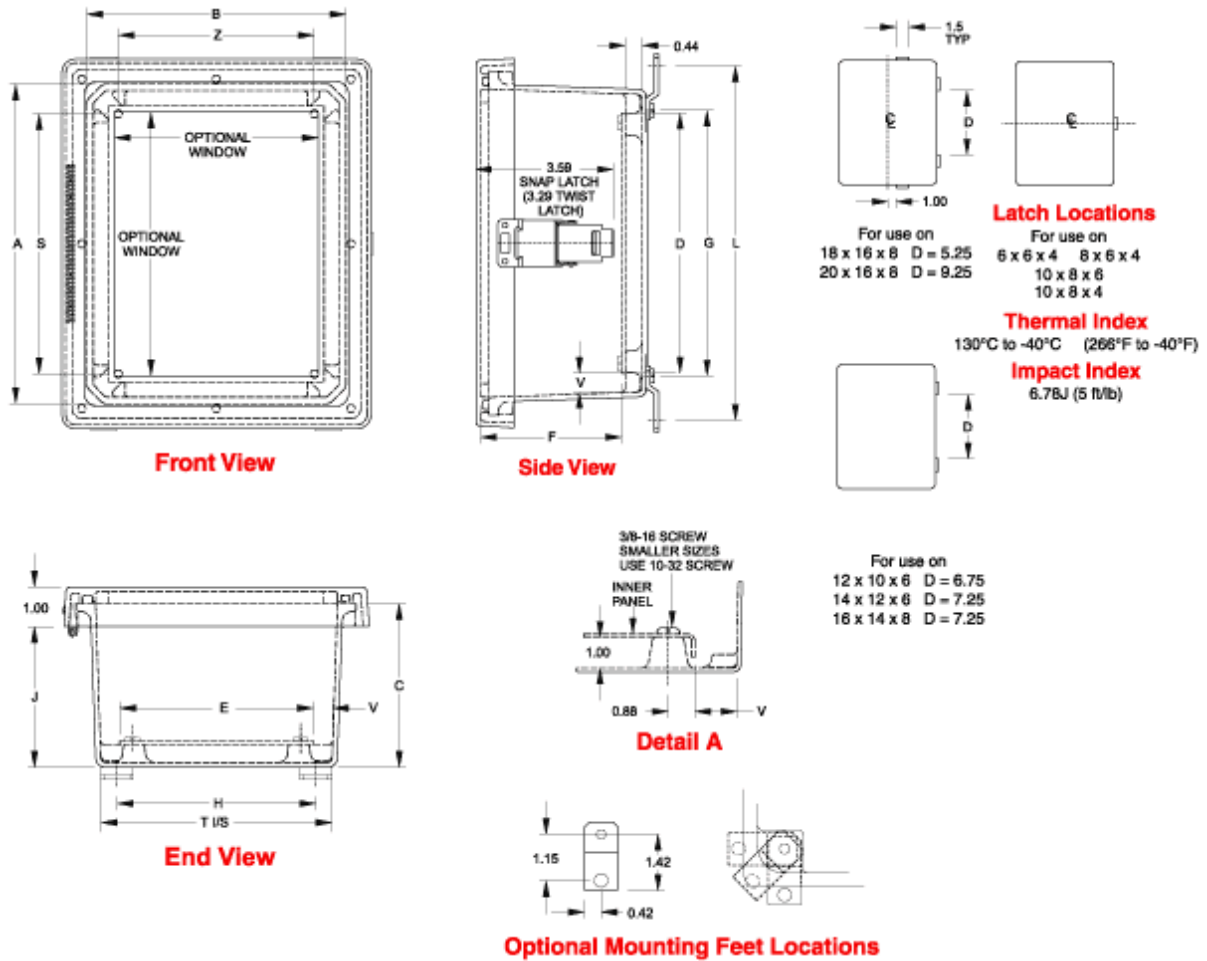
- Molded fiberglass polyester enclosure with matching cover is easily punched, cut, or drilled.
- Enhanced UV inhibitors protect against outdoor weathering.
- Standard JIC sizes under 18"x16".
- Threaded brass inserts are provided for optional inner panel or terminal kit mounting. Mounting hardware is included.
- Stainless steel draw type "snap latch" door fasteners.
- Door fasteners include a provision for padlocking.
- Enclosures are available with bonded polycarbonate viewing windows.
- Door is supported with a continuous stainless steel hinge.
- Captive oil resistant gasket provides a positive seal.
- Threaded brass inserts are provided for mounting feet to the rear of the enclosure.
- Stainless steel mounting brackets and hardware are provided for mounting to the rear of the enclosure.
- Operating temperatures between 130°C and -40°C (266°F to -40°F).
- Impact index of 6.78J (5 ft/lb).
- For corrosion resistance information, please refer to table in the **Technical Information section**.

Finish

- Fiberglass polyester material has a gray finish.
- Optional inner panels are available in white powder coated finished steel or unfinished aluminum, or Fiberglass.

Accessories

- PJ/PJU Replacement Hardware Kits
- Terminal Kit Assemblies
- Inner Panels



| Window Lift-Off | Window Hinged | Overall Dimensions | | | | | Panel Size | | | | Center | |
|-----------------|---------------|--------------------|-------|------|-------|-------|------------|-------|-------|------|--------|-------|
| Part No. | Part No. | A | B | C | D | E | F | G | H | J | S | Z |
| PJ664W | PJ664HW | 6.10 | 6.10 | 4.18 | 4.88 | 4.88 | 5.26 | 5.01 | 5.01 | 3.52 | 4.25 | 4.25 |
| PJ864W | PJ864HW | 8.00 | 6.12 | 4.13 | 6.75 | 4.88 | 5.21 | 6.89 | 5.01 | 3.47 | 6.25 | 4.25 |
| PJ1084W | PJ1084HW | 10.13 | 8.26 | 4.13 | 8.75 | 6.88 | 3.68 | 8.89 | 7.01 | 3.47 | 8.25 | 6.25 |
| PJ1086W | PJ1086HW | 10.13 | 8.26 | 6.13 | 8.75 | 6.88 | 7.21 | 8.89 | 7.01 | 5.47 | 8.25 | 6.25 |
| PJ12106W | PJ12106HW | 12.13 | 10.26 | 6.13 | 10.75 | 8.88 | 7.21 | 10.89 | 9.01 | 5.47 | 10.25 | 8.25 |
| PJ12124W | PJ12124HW | 12.13 | 12.13 | 4.13 | 10.75 | 10.88 | 3.68 | 10.89 | 11.03 | 3.47 | 10.25 | 10.25 |
| PJ12126W | PJ12126HW | 12.13 | 12.13 | 6.13 | 10.75 | 10.88 | 5.68 | 10.89 | 11.03 | 5.47 | 10.25 | 10.25 |
| PJ14126W | PJ14126HW | 14.13 | 12.26 | 6.13 | 12.75 | 10.88 | 7.21 | 12.89 | 11.01 | 5.47 | 12.25 | 10.25 |
| PJ16148W | PJ16148HW | 16.27 | 14.40 | 8.13 | 14.75 | 12.88 | 9.21 | 14.89 | 13.01 | 7.47 | 14.25 | 12.25 |
| PJ18168W | PJ18168HW | 18.40 | 16.40 | 8.13 | 16.88 | 14.88 | 9.21 | 16.97 | 14.97 | 7.47 | 16.25 | 14.25 |
| PJ20168W | PJ20168HW | 20.00 | 16.00 | 8.13 | 18.44 | 14.44 | 9.21 | 18.54 | 14.54 | 7.47 | 17.81 | 13.81 |

| Window Snap Latch | Window Twist Latch | Cover Dimensions | | | | | | | | Opt. Panel | Window Dimensions | |
|-------------------|--------------------|------------------|-------|-------|-------|-------|-------|------|------|------------|-------------------|-------|
| Part No. | Part No. | L | T | K | M | U | W | R | V | Part No. | Height | Width |
| PJ664LW | PJ664TW | 7.32 | 5.83 | 6.08 | 6.08 | 7.70 | 7.69 | 0.44 | 0.49 | 14R0505 | 4.25 | 4.25 |
| PJ864LW | PJ864TW | 9.19 | 5.85 | 6.11 | 7.98 | 9.60 | 7.71 | 0.44 | 0.50 | 14R0705 | 4.25 | 6.25 |
| PJ1084LW | PJ1084TW | 11.19 | 7.85 | 8.44 | 10.32 | 11.80 | 9.90 | 0.44 | 0.50 | 14R0907 | 8.37 | 6.5 |
| PJ1086LW | PJ1086TW | 11.19 | 7.85 | 8.44 | 10.32 | 11.80 | 9.90 | 0.44 | 0.50 | 14R0907 | 8.37 | 6.5 |
| PJ12106LW | PJ12106TW | 13.19 | 9.85 | 10.45 | 12.32 | 13.80 | 11.90 | 0.44 | 0.50 | 14R1109 | 10.37 | 8.5 |
| PJ12124LW | PJ12124TW | 13.33 | 11.85 | 12.32 | 12.32 | 13.72 | 13.72 | 0.44 | 0.50 | 14R1111 | 10.38 | 10.38 |
| PJ12126LW | PJ12126TW | 13.33 | 11.85 | 12.32 | 12.32 | 13.72 | 13.72 | 0.44 | 0.50 | 14R1111 | 10.38 | 10.38 |
| PJ14126LW | PJ14126TW | 15.19 | 11.85 | 12.45 | 14.32 | 15.70 | 13.85 | 0.44 | 0.50 | 14R1311 | 12.37 | 10.5 |
| PJ16148LW | PJ16148TW | 17.19 | 13.71 | 13.86 | 15.73 | 17.90 | 15.99 | 0.44 | 0.50 | 14R1513 | 13.00 | 11 |
| PJ18168LW | PJ18168TW | 19.28 | 15.72 | 15.86 | 17.86 | 20.00 | 18.00 | 0.44 | 0.50 | P1868 | 14.00 | 12 |
| PJ20168LW | PJ20168TW | 20.84 | 15.31 | 15.43 | 19.43 | 21.60 | 17.59 | 0.44 | 0.52 | P2068 | 15.00 | 11 |

© 2017. Hammond Manufacturing Ltd. All rights reserved.

X-ON Electronics

Largest Supplier of Electrical and Electronic Components

Click to view similar products for [Electrical Enclosures](#) category:

Click to view products by [Hammond](#) manufacturer:

Other Similar products are found below :

[MR-25L+](#) [1584DMGPK](#) [30-8739](#) [PIP-11774SCREW](#) [30-9715](#) [30-9777-BU](#) [110-402](#) [A242012LP](#) [A16N12BLP](#) [111-005](#) [9511096](#) [9511016](#)
[9822011](#) [CAB PC 203018 G](#) [NSYTLEU](#) [PC 30/25-FC3](#) [9820006](#) [1010.600](#) [1012.600](#) [AR242410CHSSL](#) [120-404](#) [127-406](#) [127-906](#)
[79021101](#) [EKIV 17](#) [EKIV 37](#) [18200101](#) [18600801](#) [19501001](#) [19600901](#) [TRH 24](#) [A317SEAL](#) [A3735SEAL](#) [HV 60 MW](#) [X16C LGR-TR](#)
[X25C LGR-TR](#) [T 160 OE HD LGR](#) [T 350 OE HD LGR](#) [T 60 M20](#) [T 60 M20 NL](#) [SDB 03 PS](#) [SDB 09 PS](#) [P2018SEAL](#) [EN1309N4](#)
[EN1511N4LATCH](#) [GSV171](#) [2762-00](#) [2763-00](#) [2765-00](#) [2761-00](#)