



*Quality Products. Service Excellence.*

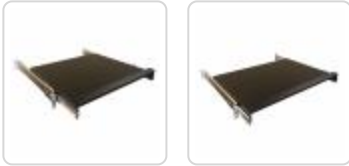
## Sliding Keyboard Shelf *RAKS Series*

129 lbs (59 kg) Weight Capacity

### Features



- Designed to fit all standard 17 inch wide keyboards.
- Shelf slides for keyboard storage when not in use.
- Requires two (2) pairs of mounting rails.
- The suggested load capacity of 129 lbs (59 kg).
  - Slides are tested to BIFMA Standards with load capacity @ 12 times/minute for 55000 cycles minimum.
- Finished in textured RAL9005 black powder paint.
- TAA-compliant for GSA Schedule purchases.
- RoHS and REACH compliant.
- Manufactured in North America.

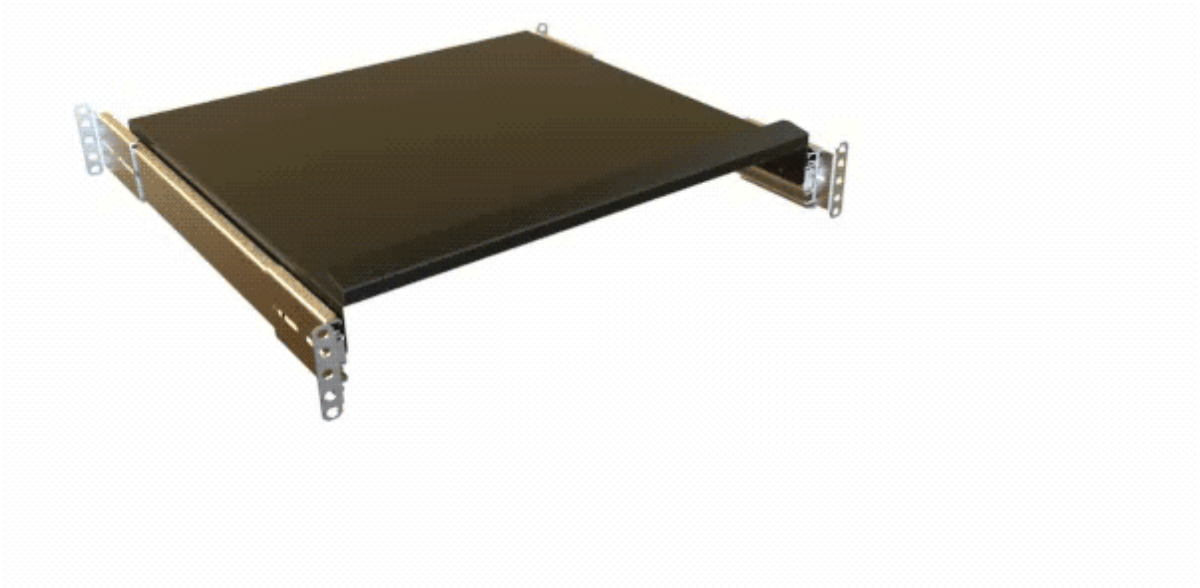


*Note: Keyboard not included.*

### Accessories

- Mounting Hardware
- Rack Equipment Installation Tool
- Extender Bracket for Sliding Shelves





Part No.	Overall Dimensions			Rack Units	Shelf Depth	Shelf Travel	Mounting Width
	Height	Width	Depth				
RAKS19BK1	2.69	18.90	15.00	2U	16.00	16.00	19.00
RAKS24BK1	2.69	23.90	15.00	2U	16.00	16.00	24.00

*Data subject to change without notice*

© 2022. Hammond Manufacturing Ltd. All rights reserved.

## X-ON Electronics

Largest Supplier of Electrical and Electronic Components

*Click to view similar products for [Racks & Rack Cabinet Accessories](#) category:*

*Click to view products by [Hammond](#) manufacturer:*

Other Similar products are found below :

[M00-PLN](#) [F2424](#) [8351-832-A-24](#) [9104](#) [9105](#) [PLFF2000](#) [H-9163-B](#) [1427C3](#) [HTS10](#) [PC-79](#) [SC10-3A](#) [SC4-28](#) [CG3-340S/12](#) [CP-001BK](#)  
[M6123-4007-SS](#) [TS170](#) [LP40](#) [5261304-07](#) [CG3-160G](#) [7112C-PLN](#) [ALUM](#) [CM10](#) [8610-3124-S-26](#) [TS81](#) [7142](#) [GP134](#) [M6125-4007-A-24](#)  
[M6127-4007-SS](#) [PBCOVER](#) [512](#) [AEG-4000G](#) [AEG-3000G](#) [HD99](#) [SR2-66A2](#) [FP10B4HP-1](#) [FP52-2](#) [1406-1006-01](#) [29478](#) [TS2535](#) [TS169-](#)  
[6](#) [CAC2](#) [HA19-3U](#) [BR-19-10-1](#) [TS180](#) [CG3-ESD](#) [SC11-1](#) [CFS-1.00/2.20](#) [AX6145WM](#) [HEC0800PB](#) [ZC633R](#) [140PLN](#)