



Quality Products. Service Excellence.

Economy Fixed Depth Wall Rack *RB-WR Series*

Rugged 70 lbs (32 kg) Weight Capacity

Features



- Available in 1U, 2U and 4U mounting heights.
- Hinged for easy rear access to devices.
- Rear cutout for cable entry through wall.
- Fixed-depth of 6"

Specifications



- Constructed in 16-gauge steel.
- Round hole 19" mounting rails are constructed in 16-gauge steel.
 - Includes ten **CLPKIT10-32-10** black rack screws with washers and clip nuts.
- Load rated up to 70 lbs (32 kg).
- Finished in smooth black powder paint.
- TAA compliant for GSA Schedule purchases.
- RoHS Compliant.
- Manufactured in North America.

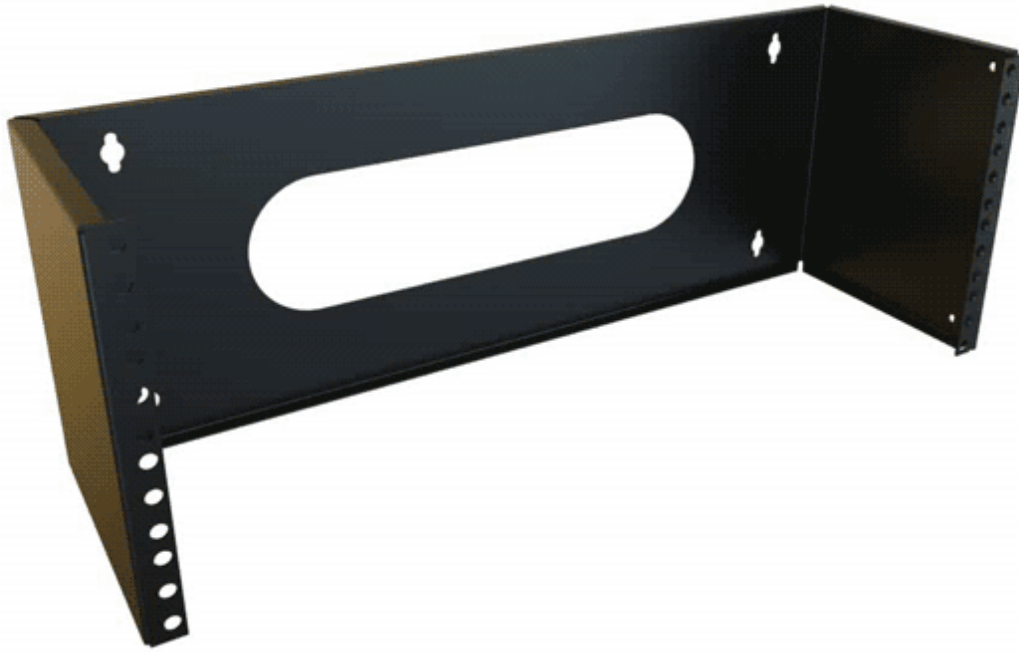
Part of the Rack Basics® line of economy rack solutions

RACK BASICS®



Accessories

- Cable Management
- Outlet Strips
- 10-32 Mounting Screw and Clip Nut Combo-Pack



| Part No. | Overall Dimensions | | | Rack Units | Mounting Dimensions | | |
|----------|--------------------|-------|-------|------------|---------------------|-------|-------|
| | Height | Width | Depth | | Height | Width | Depth |
| RB-WR1 | 1.88 | 19.36 | 6.00 | 1U | 1.75 | 19.00 | 5.75 |
| RB-WR2 | 3.62 | 19.36 | 6.00 | 2U | 3.50 | 19.00 | 5.75 |
| RB-WR4 | 7.12 | 19.36 | 6.00 | 4U | 7.00 | 19.00 | 5.75 |

Data subject to change without notice

© 2020. Hammond Manufacturing Ltd. All rights reserved.

X-ON Electronics

Largest Supplier of Electrical and Electronic Components

Click to view similar products for [Racks & Rack Cabinets](#) category:

Click to view products by [Hammond](#) manufacturer:

Other Similar products are found below :

[1440-0131-78](#) [1440-0132-78](#) [1440-0133-36](#) [AX103928](#) [5231308-07](#) [C2FSKKBK1](#) [UPS 525-17-9 PLAIN](#) [UPS 350-17-12 PLAIN](#) [UNC-3-7-5-PLAIN](#) [UNC-23/4-6-6-PLAIN](#) [SN8VCMW](#) [R4PCNWH](#) [R4PWH](#) [R4P36CNWH](#) [R4P36WH](#) [NAKIT2.0G5-B](#) [RACK-2.18](#) [RACK-3.18](#)
[SR14UBDP](#) [SR42UBDP48](#) [SR48UBDP48](#) [1440-0131-84](#) [UPS350 12-14 SEMI-GLOSS BLK](#) [UPH 350-12-14-BT](#) [UPR 525-17-14](#)
[BLU/WHT](#) [RM1908BKVP](#) [RM2U19BKFP](#) [DN-WD19 12U/600](#) [1564A2BK1](#) [895-39949](#) [5231304-07](#) [18P3317](#) [18P4545](#) [HCT302411H](#)
[HCT362011H](#) [HCT363011H](#) [HCT363611H](#) [HCT482411H](#) [HCT483011H](#) [HCT483611H](#) [HCT484814H](#) [1UHD722918N4SS](#) [RM3U19BKFP](#)
[RM2U1918SBK](#) [2CLD83643](#) [2CLD84843](#) [2CLT204843](#) [RB-2PA1945NF](#) [RB-2PA1945BK](#) [RB-2PA2345NF](#)