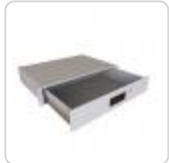




Quality Products. Service Excellence.

Rack Mount Locking Storage Drawer *RDRW Series*

Up to 145 lbs|66 kg Weight Capacity



Features

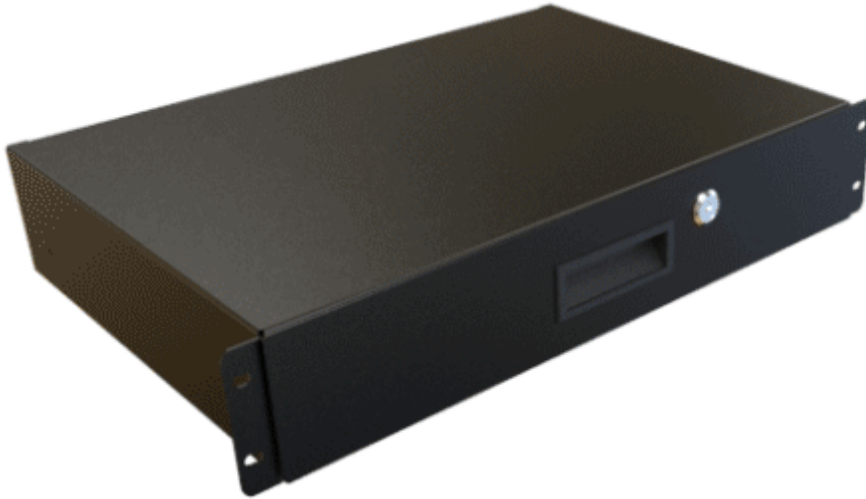
- Constructed of 14 and 16 gauge steel.
- Includes front plastic pull handle locking mechanism.
- Inside of drawer width is 16.12" wide.
- Complete drawer with slides, hardware, lock & two keys.
- Available in 3 depths.
- Rear support brackets included for all depths or can be supported from rear accessory rail.
- 6-Pack of 10-32 rack screws are included.
- Finished in textured powder paint.
- Tested to nearly double the suggested load rating of 145 lbs (66 kg) when mounted to two-pair/4-post rack rails.
 - Rated for 60 lbs (27 kg) when mounted one-pair/2-post rack rails.
- TAA compliant for GSA Schedule purchases.
- RoHS and REACH compliant.
- Manufactured in North America.



Note that the interior smooth white drawer has been discontinued. Moving forward the drawer will match the housing finish. New design also features a cable entry cutout in the rear of the drawer.

Accessories

- Mounting Hardware
- Wing Knob Latch



Part No.	Part No.	Overall Dimensions			Slide Travel	Rack Units	Weight Capacity
		Height	Width	Depth			
Black	RAL 7035 Light Gray						
RDRW1900312BK1	RDRW1900312LG1	3.50	17.36	12.25	12.00	2U	145 lbs (65.8 kg)
RDRW1900512BK1	RDRW1900512LG1	5.25	17.36	12.25	12.00	3U	145 lbs (65.8 kg)
RDRW1900712BK1	RDRW1900712LG1	7.00	17.36	12.25	12.00	4U	145 lbs (65.8 kg)
-	RDRW1900812LG1	8.75	17.36	12.25	12.00	5U	145 lbs (65.8 kg)
RDRW1900316BK1	RDRW1900316LG1	3.50	17.36	16.25	16.00	2U	129 lbs (58.5 kg)
RDRW1900516BK1	RDRW1900516LG1	5.25	17.36	16.25	16.00	3U	129 lbs (58.5 kg)
RDRW1900716BK1	RDRW1900716LG1	7.00	17.36	16.25	16.00	4U	129 lbs (58.5 kg)
RDRW1900816BK1	RDRW1900816LG1	8.75	17.36	16.25	16.00	5U	129 lbs (58.5 kg)
RDRW1901216BK1	RDRW1901216LG1	12.25	17.36	16.25	16.00	7U	129 lbs (58.5 kg)
RDRW1900322BK1	RDRW1900322LG1	3.50	17.36	22.25	22.00	2U	107 lbs (48.5 kg)
RDRW1900522BK1	RDRW1900522LG1	5.25	17.36	22.25	22.00	3U	107 lbs (48.5 kg)
RDRW1900722BK1	RDRW1900722LG1	7.00	17.36	22.25	22.00	4U	107 lbs (48.5 kg)
RDRW1900822BK1	RDRW1900822LG1	8.75	17.36	22.25	22.00	5U	107 lbs (48.5 kg)
RDRW1901222BK1	RDRW1901222LG1	12.25	17.36	22.25	22.00	7U	107 lbs (48.5 kg)

Data subject to change without notice

© 2020. Hammond Manufacturing Ltd. All rights reserved.

X-ON Electronics

Largest Supplier of Electrical and Electronic Components

Click to view similar products for [Racks & Rack Cabinets](#) category:

Click to view products by [Hammond](#) manufacturer:

Other Similar products are found below :

[1440-0131-78](#) [1440-0132-78](#) [1440-0133-36](#) [AX103928](#) [5231308-07](#) [C2FSKKBK1](#) [UPS 525-17-9 PLAIN](#) [UPS 350-17-12 PLAIN](#) [UNC-3-7-5-PLAIN](#) [UNC-23/4-6-6-PLAIN](#) [SN8VCMW](#) [R4PCNWH](#) [R4PWH](#) [R4P36CNWH](#) [R4P36WH](#) [NAKIT2.0G5-B](#) [RACK-2.18](#) [RACK-3.18](#) [SR14UBDP](#) [SR42UBDP48](#) [SR48UBDP48](#) [1440-0131-84](#) [UPS350 12-14 SEMI-GLOSS BLK](#) [UPH 350-12-14-BT](#) [UPR 525-17-14](#) [BLU/WHT](#) [RM1908BKVP](#) [RM2U19BKFP](#) [DN-WD19 12U/600](#) [1564A2BK1](#) [895-39949](#) [5231304-07](#) [18P3317](#) [18P4545](#) [HCT302411H](#) [HCT362011H](#) [HCT363011H](#) [HCT363611H](#) [HCT482411H](#) [HCT483011H](#) [HCT483611H](#) [HCT484814H](#) [1UHD722918N4SS](#) [RM3U19BKFP](#) [RM2U1918SBK](#) [2CLD83643](#) [2CLD84843](#) [2CLT204843](#) [RB-2PA1945NF](#) [RB-2PA1945BK](#) [RB-2PA2345NF](#)