

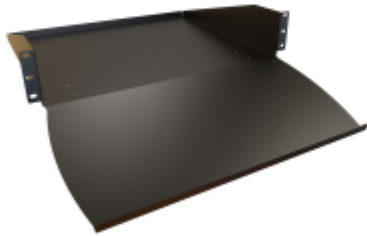


Quality Products. Service Excellence.

# Two Post Mounting Keyboard & Equipment Shelf *RKBM Series*

100 lbs (45 kg) Weight Capacity

## Features



- Constructed of 14-gauge steel.
- Mounts to rack rails using 3.47" (2U) of vertical rack space.
- Rear lip to reduce the chance of equipment being pushed off the rear of the shelf.
- The new ergonomic designed keyboard tray supports a full-size keyboard.
- Finished in textured RAL9005 black powder paint.
- Tested to nearly double the suggested load rating of 100 lbs (45 kg).
- TAA-compliant for GSA Schedule purchases.
- RoHS and REACH compliant.
- Manufactured in North America.



## Accessories

- Mounting Hardware



Part No.	Overall Dimensions		Mounting Dimensions		
	Keyboard Depth	Rear Shelf Depth	Rack Units	Height	Width
RKBM19BK1	8.66	15.00	2U	3.47	19.00
RKBM23BK1	8.66	15.00	2U	3.47	23.00

Data subject to change without notice





## X-ON Electronics

Largest Supplier of Electrical and Electronic Components

*Click to view similar products for [Racks & Rack Cabinet Accessories](#) category:*

*Click to view products by [Hammond](#) manufacturer:*

Other Similar products are found below :

[M00-PLN](#) [F2424](#) [8351-832-A-24](#) [9104](#) [9105](#) [PLFF2000](#) [H-9163-B](#) [1427C3](#) [HTS10](#) [PC-79](#) [SC10-3A](#) [SC4-28](#) [CG3-340S/12](#) [CP-001BK](#)  
[M6123-4007-SS](#) [TS170](#) [LP40](#) [5261304-07](#) [CG3-160G](#) [7112C-PLN](#) [ALUM](#) [CM10](#) [8610-3124-S-26](#) [TS81](#) [7142](#) [GP134](#) [M6125-4007-A-24](#)  
[M6127-4007-SS](#) [PBCOVER](#) [512](#) [AEG-4000G](#) [AEG-3000G](#) [HD99](#) [SR2-66A2](#) [FP10B4HP-1](#) [FP52-2](#) [1406-1006-01](#) [29478](#) [TS2535](#) [TS169-](#)  
[6](#) [CAC2](#) [HA19-3U](#) [BR-19-10-1](#) [TS180](#) [CG3-ESD](#) [SC11-1](#) [CFS-1.00/2.20](#) [AX6145WM](#) [HEC0800PB](#) [ZC633R](#) [140PLN](#)