



Quality Products. Service Excellence.

# ABS Plastic Project Enclosures *RL Series*

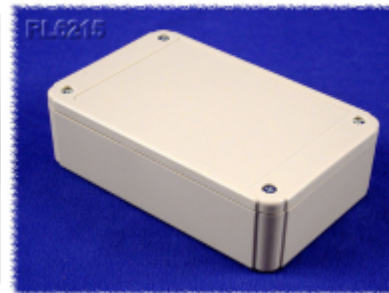
Shallow Lid

### Key Features:

- Designed to house P.C. boards for hand-held use or wall mount.
- Molded in light grey or black general purpose ABS plastic with a light texture.
- Two part construction. Both halves include smooth recessed area for membrane, label or silkscreen (see chart below for recess size).
- P.C. board standoffs are molded into both halves of the enclosure (see photo tables for details).
- Designed to meet IP54.
- All sizes also available in a flanged lid version.
- Includes four M3 x 25mm self-tapping lid screws.
- Includes four M2.6 x 6mm self-tapping P.C. board screws.
- For replacement lid screws (quantity 50) order part number **SC520-50**.
- For replacement P.C. board screws (quantity 50) order part number **SC519-50**.



### Photos:



Available in black or gray, and with or without mounting flanges. Includes lid and PC board screws.

### Enclosures (No Wall Mounting Flanges)

Black Enclosure	Gray Enclosure	Length	Width	Depth (with lid)	Lid Recess Size	Bottom Recess Size	PCB Mounting Dim
RL6105BK	RL6105	3.15	2.36	1.18	2.13 x 2.05	2.13 x 2.05	2.52 x 1.18
RL6115BK	RL6115	3.15	2.36	1.57	2.13 x 2.05	2.13 x 2.05	2.52 x 1.18
RL6165BK	RL6165	4.13	2.56	1.18	3.11 x 2.24	3.11 x 2.24	3.5 x 1.38
RL6175BK	RL6175	4.13	2.56	1.57	3.11 x 2.24	3.11 x 2.24	3.5 x 1.38
RL6205BK	RL6205	4.92	3.15	0.98	3.78 x 2.76	3.78 x 2.76	4.21 x 1.57
RL6215BK	RL6215	4.92	3.15	1.38	3.78 x 2.76	3.78 x 2.76	4.21 x 1.57
RL6225BK	RL6225	4.92	3.15	1.97	3.78 x 2.76	3.78 x 2.76	4.21 x 1.57
RL6335BK	RL6335	4.92	3.94	2.36	3.78 x 3.46	3.78 x 3.46	4.17 x 2.56
RL6365BK	RL6365	4.92	3.94	3.54	3.78 x 3.46	3.78 x 3.46	4.17 x 2.56
RL6435BK	RL6435	5.91	3.94	2.36	4.72 x 3.54	4.72 x 3.54	5.20 x 2.36
RL6465BK	RL6465	5.91	3.94	3.54	4.72 x 3.54	4.72 x 3.54	5.20 x 2.36

Black Enclosure	Gray Enclosure	Length	Width	Depth (with lid)	Lid Recess Size	Bottom Recess Size	PCB Mounting Dim
RL6555BK	RL6555	6.89	4.92	2.76	5.59 x 4.53	5.59 x 4.53	6.06 x 2.76
RL6585BK	RL6585	6.89	4.92	3.94	5.59 x 4.53	5.59 x 4.41	6.06 x 2.76
RL6655BK	RL6655	7.87	5.91	2.76	6.50 x 5.31	6.50 x 5.31	7.01 x 3.94
RL6685BK	RL6685	7.87	5.91	3.94	6.50 x 5.31	6.50 x 5.31	7.01 x 3.94

### Enclosures with Wall Mounting Flanges

Black Enclosure	Gray Enclosure	Length	Width	Depth (with lid)	Lid Recess Size	Bottom Recess Size	PCB Mounting Dim
RL6105-FBK	RL6105-F	3.15	2.36	1.18	2.13 x 2.05	2.13 x 2.05	2.52 x 1.18
RL6115-FBK	RL6115-F	3.15	2.36	1.57	2.13 x 2.05	2.13 x 2.05	2.52 x 1.18
RL6165-FBK	RL6165-F	4.13	2.56	1.18	3.11 x 2.24	3.11 x 2.24	3.5 x 1.38
RL6175-FBK	RL6175-F	4.13	2.56	1.57	3.11 x 2.24	3.11 x 2.24	3.5 x 1.38
RL6205-FBK	RL6205-F	4.92	3.15	0.98	3.78 x 2.76	3.78 x 2.76	4.21 x 1.57
RL6215-FBK	RL6215-F	4.92	3.15	1.38	3.78 x 2.76	3.78 x 2.76	4.21 x 1.57
RL6225-FBK	RL6225-F	4.92	3.15	1.97	3.78 x 2.76	3.78 x 2.76	4.21 x 1.57
RL6335-FBK	RL6335-F	4.92	3.94	2.36	3.78 x 3.46	3.78 x 3.46	4.17 x 2.56
RL6365-FBK	RL6365-F	4.92	3.94	3.54	3.78 x 3.46	3.78 x 3.46	4.17 x 2.56
RL6435-FBK	RL6435-F	5.91	3.94	2.36	4.72 x 3.54	4.72 x 3.54	5.20 x 2.36
RL6465-FBK	RL6465-F	5.91	3.94	3.54	4.72 x 3.54	4.72 x 3.54	5.20 x 2.36
RL6555-FBK	RL6555-F	6.89	4.92	2.76	5.59 x 4.53	5.59 x 4.53	6.06 x 2.76
RL6585-FBK	RL6585-F	6.89	4.92	3.94	5.59 x 4.53	5.59 x 4.41	6.06 x 2.76
RL6655-FBK	RL6655-F	7.87	5.91	2.76	6.50 x 5.31	6.50 x 5.31	7.01 x 3.94
RL6685-FBK	RL6685-F	7.87	5.91	3.94	6.50 x 5.31	6.50 x 5.31	7.01 x 3.94

*Data subject to change without notice*

© 2022. Hammond Manufacturing Ltd. All rights reserved.

## X-ON Electronics

Largest Supplier of Electrical and Electronic Components

*Click to view similar products for [Enclosures, Boxes & Cases](#) category:*

*Click to view products by [Hammond](#) manufacturer:*

Other Similar products are found below :

[585-R-WH-PK](#) [014415](#) [M-10-PLATED](#) [60221-01](#) [60566-01-000](#) [HPL-9VB BATT DOOR](#) [M18-PLTD](#) [M-21-PLATED](#) [63310-01-000](#)  
[6711GSKT](#) [71884-29-028](#) [LH45-100 Black](#) [7200B](#) [72868-510-000](#) [CNS-0000 Black](#) [72883-510-000](#) [CNS-0101 Black](#) [72906-510-000](#) [CNS-](#)  
[0407 Black](#) [73092-510-000](#) [CNM-0101 Black](#) [73105-510-000](#) [CNL-0101 Black](#) [73108-510-000](#) [CNL-0303 Black](#) [73395-510-039](#) [CNS-0006](#)  
[Bone](#) [74257-510-000](#) [CNL-0004](#) [MDC-1183-PLAIN-ALUM](#) [MDC-1183-PTD](#) [MDC-13104-PTD](#) [MDC-321-PTD](#) [MDC-973-PTD](#) [76](#)  
[77153-01-028](#) [FLX6030](#) [83535-01-508](#) [90026-501-000](#) [PS36-200](#) [116-508](#) [120-407](#) [120-910](#) [127-908](#) [130-008](#) [1301170079](#) [1322GSKTEP](#)  
[1325GSKT3](#) [138-PLAIN](#) [1434-1210](#) [EAS-500 \(BLACK ANO\)](#) [1804RP-RB-PK](#) [190-005](#) [KAB3321 BLACK](#) [KAB3421](#) [2697466](#) [S52213](#)  
[2901699](#) [A0645271](#) [A20P20](#) [2106-IR](#)