



Quality Products. Service Excellence.

Water-Tight ABS & Polycarbonate Enclosures *RZ Series*

Opaque or Clear Lid, Smooth Surface



Key Features:

- Designed to meet IP65.
- Ideally suited for mounting printed circuit boards or DIN rail mounted components
- Gasketed lid with two-piece tongue & groove construction provides protection against access of oil, dust, and water
- Lid screws are self-captivating (lid holes are threaded with first installation of screws.)
- All sizes are available with clear polycarbonate lid (part numbers ending in "C")
- Easy to wall-mount using "through box-blind hole construction" whereby the wall-mounting holes are outside the gasket perimeter.

ABS Plastic Specifications:

- Suggested for indoor use
- UL Flammability rating of UL94-HB
- Color: RAL1013
- Temperature: -30 degrees C to +80 degrees C.

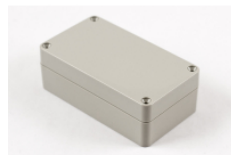


Polycarbonate Specifications

- Suggested for outdoor use
- UL Flammability rating of UL94-V2
- Color: RAL7035
- Temperature: -40 degrees C to +130 degrees C.



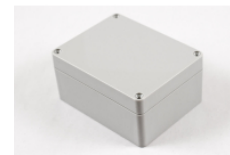
Available In Four Styles:



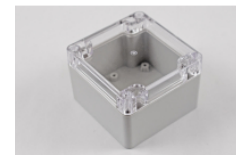
Beige ABS plastic



Beige ABS plastic with clear polycarbonate lid



Light gray polycarbonate



Light gray polycarbonate with clear polycarbonate lid



Enclosure is assembled with corrosion resistant hardware. Wall Mounting holes are outside the gaskets perimeter.



Internal mounting points designed for printed circuit boards or DIN rail

Light Gray Polycarbonate	Light Gray Polycarbonate w/ Clear Polycarbonate Lid	Beige ABS Plastic	Beige ABS Plastic w/ Clear Polycarbonate Lid	Length	Width	Depth
RZ0250	RZ0250C	RZ0362	RZ0362C	52	50	35
RZ0256	RZ0256C	RZ0366	RZ0366C	82	80	55
RZ0203	RZ0203C	RZ0304	RZ0304C	115	65	40
RZ0205	RZ0205C	RZ0308	RZ0308C	115	65	55
RZ0212	RZ0212C	RZ0311	RZ0311C	115	90	55
RZ0214	RZ0214C	RZ0313	RZ0313C	171	121	55
RZ0223	RZ0223C	RZ0340	RZ0340C	171	121	80
RZ0269	RZ0269C	RZ0373	RZ0373C	200	120	75
RZ0218	RZ0218C	RZ0317	RZ0317C	222	146	55
RZ0232	RZ0232C	RZ0353	RZ0353C	222	146	75

Data subject to change without notice

© 2022. Hammond Manufacturing Ltd. All rights reserved.

X-ON Electronics

Largest Supplier of Electrical and Electronic Components

Click to view similar products for [Enclosures, Boxes & Cases](#) category:

Click to view products by [Hammond](#) manufacturer:

Other Similar products are found below :

[585-R-WH-PK](#) [014415](#) [M-10-PLATED](#) [60221-01](#) [60566-01-000](#) [HPL-9VB BATT DOOR](#) [M18-PLTD](#) [M-21-PLATED](#) [63310-01-000](#)
[6711GSKT](#) [71884-29-028](#) [LH45-100 Black](#) [7200B](#) [72868-510-000](#) [CNS-0000 Black](#) [72883-510-000](#) [CNS-0101 Black](#) [72906-510-000](#) [CNS-](#)
[0407 Black](#) [73092-510-000](#) [CNM-0101 Black](#) [73105-510-000](#) [CNL-0101 Black](#) [73108-510-000](#) [CNL-0303 Black](#) [73395-510-039](#) [CNS-0006](#)
[Bone](#) [74257-510-000](#) [CNL-0004](#) [MDC-1183-PLAIN-ALUM](#) [MDC-1183-PTD](#) [MDC-13104-PTD](#) [MDC-321-PTD](#) [MDC-973-PTD](#) [76](#)
[77153-01-028](#) [FLX6030](#) [83535-01-508](#) [90026-501-000](#) [PS36-200](#) [116-508](#) [120-407](#) [120-910](#) [127-908](#) [130-008](#) [1301170079](#) [1322GSKTEP](#)
[1325GSKT3](#) [138-PLAIN](#) [1434-1210](#) [EAS-500 \(BLACK ANO\)](#) [1804RP-RB-PK](#) [190-005](#) [KAB3321 BLACK](#) [KAB3421](#) [2697466](#) [S52213](#)
[2901699](#) [A0645271](#) [A20P20](#) [2106-IR](#)