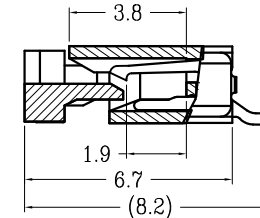
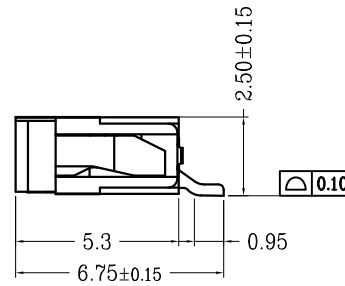
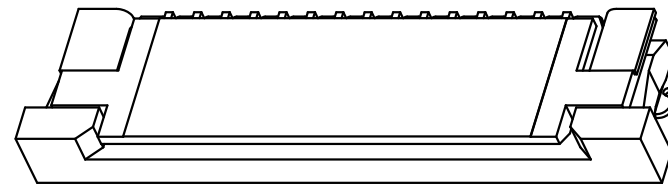
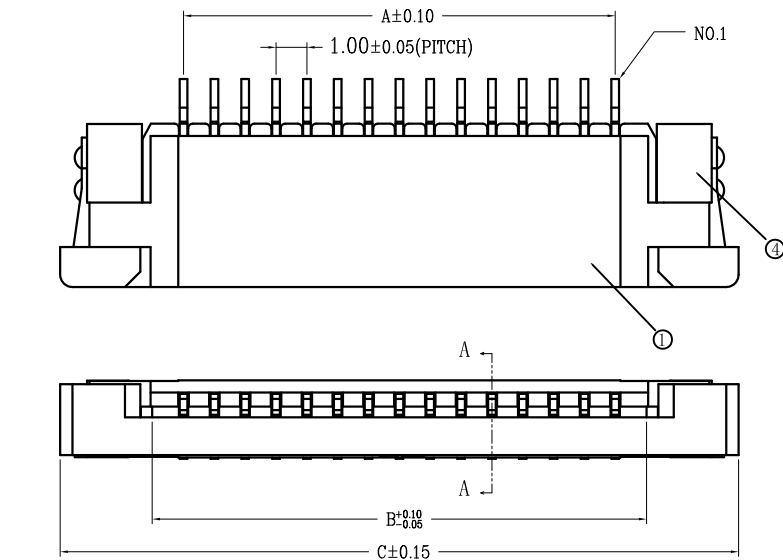
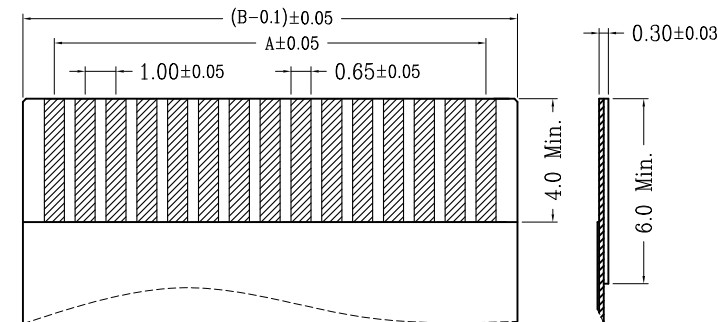
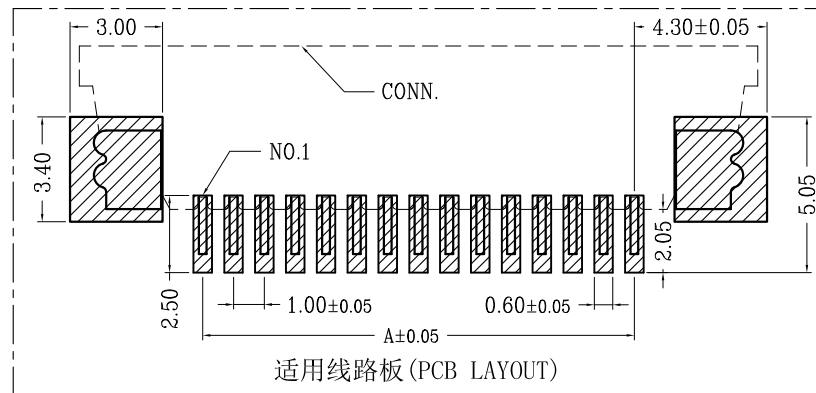
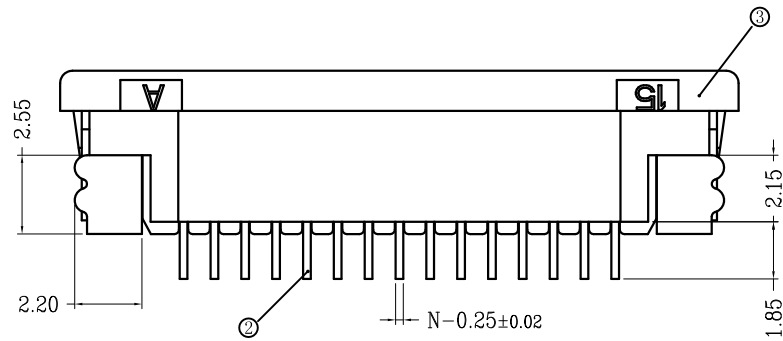


| 序号 | 品名 | 材质 |
|----|--|---|
| ① | 1.0K型胶芯 (H2.5) 1.0K Type Housing (H2.5) | LCP UL94V-0 本色 Natural |
| ② | 1.0K型上端子 (H2.5) 1.0K Type Upper Terminal (H2.5) | 磷青铜/表面镀锡 Phosphor Bronze/ Tin Plating |
| ③ | 1.0K型卧式后盖 (H2.5) 1.0K Type Actuator (H2.5) | LCP UL94V-0 黑色 Black |
| ④ | 1.0K型卧式焊片 (H2.5) 1.0K Type Fitting Nail (H2.5) | 黄铜/表面镀锡 Brass/Tin Plating |



SECTION A-A



适用扁平线 (Applicable Flat Cable)

| CKT | A | B | C |
|-----|-------|-------|-------|
| 4 | 3.00 | 5.06 | 11.10 |
| 5 | 4.00 | 6.06 | 12.10 |
| 6 | 5.00 | 7.06 | 13.10 |
| 7 | 6.00 | 8.06 | 14.10 |
| 8 | 7.00 | 9.06 | 15.10 |
| 9 | 8.00 | 10.06 | 16.10 |
| 10 | 9.00 | 11.06 | 17.10 |
| 11 | 10.00 | 12.06 | 18.10 |
| 12 | 11.00 | 13.06 | 19.10 |
| 13 | 12.00 | 14.06 | 20.10 |
| 14 | 13.00 | 15.06 | 21.10 |
| 15 | 14.00 | 16.06 | 22.10 |
| 16 | 15.00 | 17.06 | 23.10 |
| 18 | 17.00 | 19.06 | 25.10 |
| 19 | 18.00 | 20.06 | 26.10 |
| 20 | 19.00 | 21.06 | 27.10 |
| 22 | 21.00 | 23.06 | 29.10 |
| 24 | 23.00 | 25.06 | 31.10 |
| 25 | 24.00 | 26.06 | 32.10 |
| 26 | 25.00 | 27.06 | 33.10 |
| 28 | 27.00 | 29.06 | 35.10 |
| 30 | 29.00 | 31.06 | 37.10 |
| 32 | 31.00 | 33.06 | 39.10 |
| 35 | 34.00 | 36.06 | 42.10 |
| 36 | 35.00 | 37.06 | 43.10 |
| 40 | 39.00 | 41.06 | 47.10 |

| DESIGNED | | CHECKED | | APPROVAL | | DRAWING NUMBER | | DATE | | REV. | | SCALE | |
|----------|--|---------|--|----------|--|----------------|--|------------------------|--|--|--|--|--|
| Mikey | | Tom | | Jerry | | PART NAME | | 10B25UXXP | | UNLESS OTHERWISE SPECIFIED, TOLERANCE: | | X. ±0.25 X.x ±0.20 X.xx ±0.15 ANGULAR ±3° | |
| ECN BO. | | new | | 2015/5/3 | | DESCRIPTION. | | A | | REV. | | SCALE: 1/2 | |
| DESIGNED | | CHECKED | | APPROVAL | | DRAWING NUMBER | | DATE | | REV. | | SCALE: 3:1 | |
| Mikey | | Tom | | Jerry | | PART NAME | | 10B25UXXP | | UNLESS OTHERWISE SPECIFIED, TOLERANCE: | | X. ±0.25 X.x ±0.20 X.xx ±0.15 ANGULAR ±3° | |
| | | | | | | 3RD ANGLE PROJ | | HanElectricity Co.,LTD | | FILE.NO. | | | |

瀚源

X-ON Electronics

Largest Supplier of Electrical and Electronic Components

Click to view similar products for [FFC & FPC Connectors](#) category:

Click to view products by [HanElectricity](#) manufacturer:

Other Similar products are found below :

[00-6200-227-022-800](#) [006205250500825+](#) [006205280500825+](#) [FPH-1602G](#) [086222026001800](#) [52610-0675](#) [62674-201121DLF](#) [52746-1671-TR250](#) [10051922-1610EHLF](#) [10051922-2810EHLF](#) [686322124422](#) [XF3M-2915-1B-R100](#) [AYF353125A](#) [AYF530665TA](#) [AYF534065TA](#) [20FLH-RSM1-TB](#) [PCA-7F-25-HL-3-G](#) [207356-1](#) [52807-0430](#) [FFC05011-10SBB114W5M](#) [502250-8027](#) [FH28K-40S-0.5SH](#) [200528-0260](#) [FH28K-10S-0.5SH](#) [501951-1250](#) [X05B20U43T](#) [0.5K-DX-30PWB](#) [DS1020-08-10VBT12](#) [THD0515-34CL-GF](#) [X05A10L28G](#) [ECC2841061EU](#) [20539-030E-01](#) [1.0K-DHQX-16PWB](#) [1.0K-DHQX-30PWB](#) [1775333-6](#) [10054365-202110ELF](#) [10054365-242110ELF](#) [10054365-282110ELF](#) [10064555-392220HLF](#) [59453-041110EBHLF](#) [59453-091110EDHLF](#) [62674-241141ALF](#) [62684-432100ALF](#) [62684-451100AHLF](#) [62684-5721N0ALF](#) [HFW11R-1STE1MTLF](#) [HFW12R-1STE9LF](#) [HFW14R-1STE9MTLF](#) [HFW18S-2STE9LF](#) [HFW20R-1STAE1HLF](#)