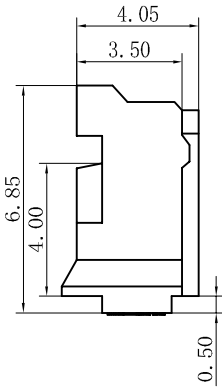
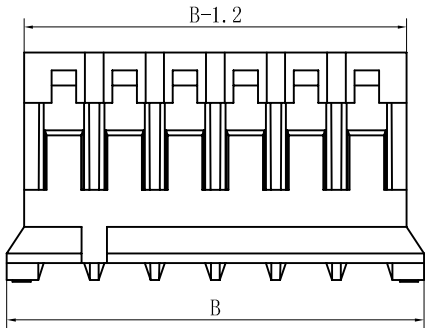
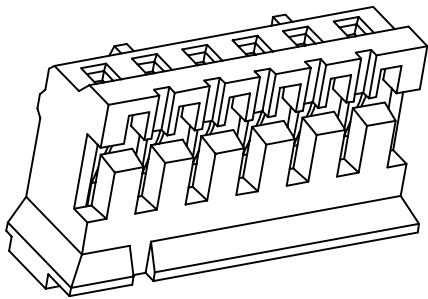
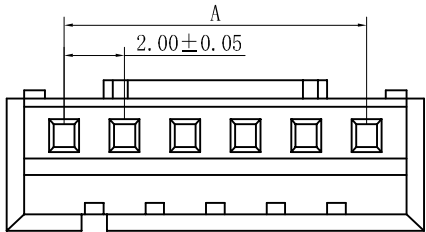


- 1. 极数 poles: 2 to 20P
- 2. 额定电流 Current rating: 2.0A AC, DC
- 3. 额定电压 Voltage rating: 100V AC, DC
- 4. 温度范围 Temperature range: -25°C to +85°C
- 5. 接触电阻 Contact resistance:  $\leq 10\text{m}\Omega$
- 6. 绝缘电阻 Insulation resistance:  $\geq 1000\text{m}\Omega$
- 7. 耐电压 Withstand voltage: 800V AC/minute
- 8. 适用线规 Applicable Wire: AWG #32 to #24



Poles	Dimensions mm	
	A	B
2	2.00	5.80
3	4.00	7.80
4	6.00	9.80
5	8.00	11.80
6	10.00	13.80
7	12.00	15.80
8	14.00	17.80
9	16.00	19.80
10	18.00	21.80
11	20.00	23.80
12	22.00	25.80
13	24.00	27.80
14	26.00	29.80
15	28.00	31.80
16	30.00	33.80
--	--	--

2016HM-XXP	Nylon UL94V-0	2016W	2016TF
Series No.	Material	Mate with Wafer	Mate with Terminal

new		2015/5/3	A	瀚源			
ECN BO.		DATE.	REV.				
DESIGNED	CHECKED	APPROVAL	DRAWING NUMBER	SCALE: 1/2	SCALE: 3:1		
Mikey	Tom	Jerry	PART NAME	2016HM-XXP	UNLESS OTHERWISE SPECIFIED, TOLERANCE:	X.	±0.25
			MODEL NAME	H-2016HM-XXP		X.x	±0.20
			3RD ANGLE PROJ	HanElectricity Co.,LTD		X.xx	±0.15
				FILE.NO.			

## X-ON Electronics

Largest Supplier of Electrical and Electronic Components

*Click to view similar products for [Headers & Wire Housings](#) category:*

*Click to view products by [HanElectricity](#) manufacturer:*

Other Similar products are found below :

[0015917161](#) [0022155065](#) [57102-F02-18ULF](#) [58102-G61-06LF](#) [582553-1](#) [01.001.5753.1](#) [0050291907](#) [02.125.8002.8](#) [609-3404](#) [61062-3](#)  
[CSU011177004](#) [622-0430](#) [622-3653LF](#) [63453-116](#) [636-1030](#) [636-1427](#) [636-3427](#) [636-4007](#) [641938-9](#) [65495-038](#) [65692-001LF](#) [65781-018](#)  
[65781-047](#) [65817-010LF](#) [65817-015LF](#) [67095-007LF](#) [67601157](#) [68631-112](#) [68645-018](#) [699319-000](#) [70.362.1628.0](#) [70-4210](#) [70-4226B](#) [70-](#)  
[4853B](#) [71.350.2428.0](#) [733-134](#) [733-162](#) [760-3052](#) [MHR-64-VUAL](#) [80.063.4001.1](#) [800-90-001-10-001000](#) [801-43-002-10-013000](#)  
[801-43-006-10-002000](#) [803-43-024-10-001000](#) [803-93-012-10-001000](#) [8-1437020-4](#) [819-22-004-30-001101](#) [820-22-006-30-001101](#)  
[820-22-008-30-001101](#) [821-22-002-10-001101](#)