

Technical requirement

技术要求

Service conditions: - 40 °C ~ 55 °C

使用条件:-40°C~55°C

Rated load: DC 30V 0.5A

额定负荷:DC 30V 0.5A

Contact resistance: ≤ 0.03 Ω

接触电阻:≤0.03Ω

Insulation resistance: ≥ 100m Ω dc250v

绝缘电阻:≥100MΩ DC250V

Withstand voltage: AC 500V (50Hz) / min

耐压:AC 500V(50Hz)/min

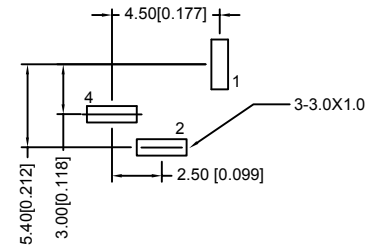
Plugging force: 3 ~ 20n

插拔力:3~20N

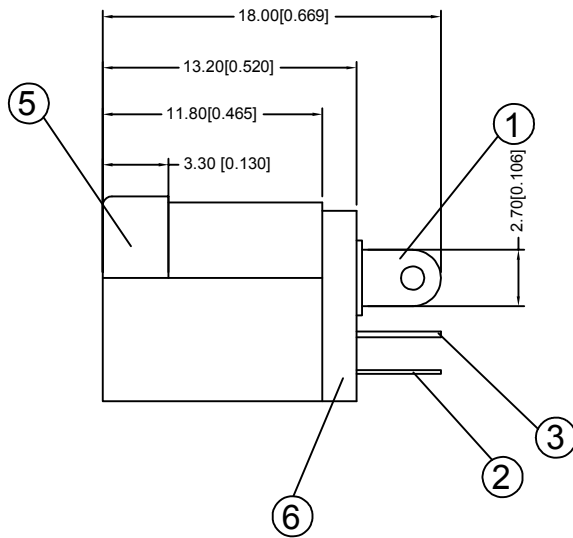
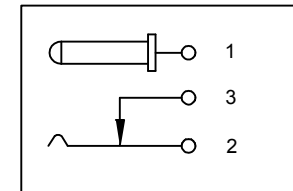
Mechanical life: 5000 times


机械寿命:5000次

线路板按照尺寸示意图



电路结构示意图



6	Cover plate	1PCS	PA 66	BLACK	—		new		2015/5/3	A		
5	Pedestal	1PCS	PA 66 (BLACK)		ECN BO.		DESCRIPTION.		DATE.	REV.		
4	Pin	1PCS	Brass	NI	DESIGNED	CHECKED	APPROVAL	DRAWING NUMBER	SCALT: 1/2		SCALE: 3:1	
3	Static contact piece	1PCS	Brass	SN	Mikey	Tom	Jerry	PART NAME	DC-012-2.5	UNLESS OTHERWISE SPECIFIED,TOLERANCE:		X. ±0.25
2	Moving contact piece	1PCS	Spcc	SN				MODEL NAME	DC-012-2.5			X.x ±0.20
1	Pin pin	1PCS	Brass	SN				3RD ANGLE PROJ	HANYONES TECH CO.,LTD	ANGULAR	X.xx ±0.15	±3'
ITEM	NAME	PCS	Material Science	Remarks					FILE. NO.			

X-ON Electronics

Largest Supplier of Electrical and Electronic Components

Click to view similar products for [DC Power Connectors](#) category:

Click to view products by [HanElectricity](#) manufacturer:

Other Similar products are found below :

[KLDX-SMT-0202-BPTR](#) [171-0722-E](#) [K596](#) [KLD-0201-BC](#) [4C6831AX](#) [10073976-112LF](#) [LCB60PW-M](#) [LCB30PW-M](#) [LCB60PB-M](#)
[LCC30PB-M](#) [LCB50PW-M](#) [LCB50-M](#) [LCB60-F](#) [LCC30-M](#) [LCB40PW-M](#) [LCC30PW-M](#) [LCB50-F](#) [LCB40-F](#) [LCB30-F](#) [LCC40-M](#)
[LCC40PB-M](#) [LCB40PB-M](#) [LCC40-F](#) [LCB60-M](#) [LCC40PW-M](#) [LCB50PB-M](#) [DC-002-100](#) [DC-031A-130](#) [DC-031A-100](#) [DC-003A-130](#)
[DC-045-130](#) [DC-192-130](#) [DC-033-130](#) [DC-011-100](#) [DC-002F-130](#) [DC-002-130](#) [DB-14-2F](#) [DC-183B](#) [DC-060-04A](#) [DC-099-200](#) [DC-015-](#)
[250-A](#) [DC-016-200-A](#) [DC-005A-200](#) [DC-044A-200](#) [DC-088-200](#) [DC-022A-200](#) [DC-038-150](#) [DC-012A-250](#) [DC-005C-130](#) [DC-012A-200](#)