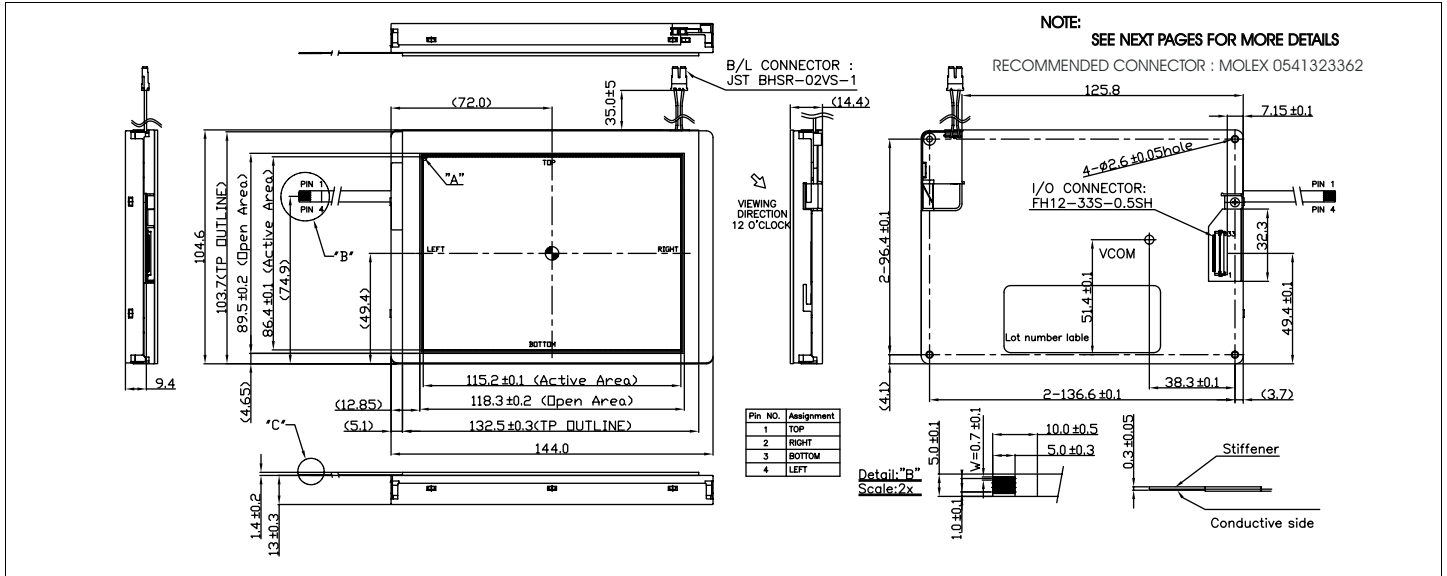


HDA570S-V

Dimensional Drawing

5.7" , QVGA (TFT) Color Graphics ,White LED Backlight



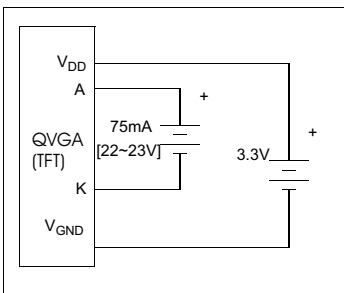
Features
 Viewing Angle(U/D/R/L).....55/50/60/60 degrees
 High Contrast.....450:1
 Fast Response Time (Tr/Tf).....15/35 msec
 Built-in Controller.....none
 Touch screenoptional

Physical Data
 Module Size.....144.0W x104.6H x13.0T mm
 Viewing Area Size.....118.3W x89.5 H mm
 Dot Pitch.....0.12W x 0.36H mm
 Weight.....210g

Electrical Characteristics (VDD=3.3±0.125V 25°C)

PARAMETER	SYM	CONDITION	MIN	TYP	MAX	UNIT
OPERATING VOLTAGE	V _{DD}	-	3.0	3.3	3.6	V
OPERATING VOLTAGE	V _{LED}	I = 60 mA	-	22	-	V
INPUT HIGH VOLTAGE	V _{IH}		0.7*V _{DD}	-	V _{DD}	V
INPUT LOW VOLTAGE	V _{IL}		0	-	0.3*V _{DD}	V
OPERATING CURRENT	I _{DD}		-	60	-	mA
OPERATING CURRENT LED	I _{LED}		-	-	75	mA
POWER CONSUMPTION LED	P _D		-	0.24	-	W
BRIGHTNESS	L	Average	350	380	-	cd/m ²

Power Supply



Pin Connections

PIN NO.	SYMBOL	FUNCTION
1	GND	Ground Pin
2	CK	Data Sampling Clock
3	HS	Horizontal Sync.
4	VS	Vertical Sync.
5	GND	Ground Pin
6	R0	Red Data Signal (LSB)
7	R1	Red Data Signal
8	R2	Red Data Signal
9	R3	Red Data Signal
10	R4	Red Data Signal
11	R5	Red Data Signal (MSB)
12	GND	Ground Pin
13	G0	Green Data Signal (LSB)
14	G1	Green Data Signal
15	G2	Green Data Signal
16	G3	Green Data Signal
17	G4	Green Data Signal
18	G5	Green Data Signal (MSB)
19	GND	Ground Pin
20	B0	Blue Data Signal (LSB)
21	B1	Blue Data Signal
22	B2	Blue Data Signal
23	B3	Blue Data Signal
24	B4	Blue Data Signal
25	B5	Blue Data Signal
26	GND	Ground Pin
27	DE	Data Enable Input
28	VDD	3.3V Power Supply
29	VDD	3.3V Power Supply
30	RL	Horizontal Display Mode
31	UD	Vertical Display Mode
32	NC	No Connection
33	GND	Ground Pin

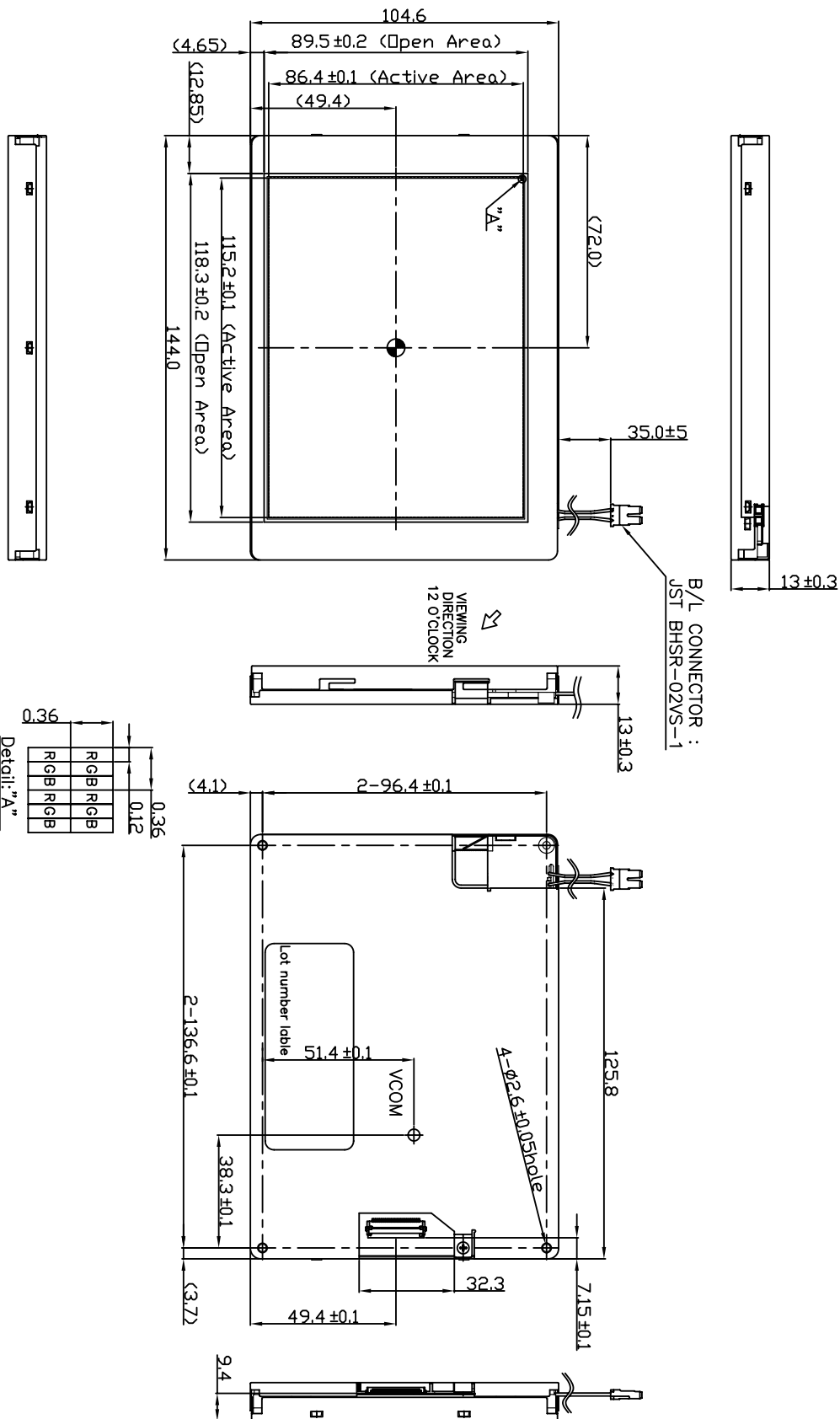
Absolute Maximum Ratings

PARAMETER	SYMBOL	MIN	MAX	UNIT
SUPPLY VOLTAGE	V _{DD} ΔV _{DD}	-0.3	4.3	V
BACKLIGHT CURRENT(White LED)	I _{LED}	-	75	mA
INPUT VOLTAGE	V _{IN}	-0.3	V _{DD} + 0.3	V
OPERATING TEMPERATURE	T _{OP}	-20	+70	°C
STORAGE TEMPERATURE	T _{STG}	-30	+80	°C

HDA570ST-V

Dimensional Drawing

5.7" , QVGA (TFT) Color Graphics ,White LED Backlight



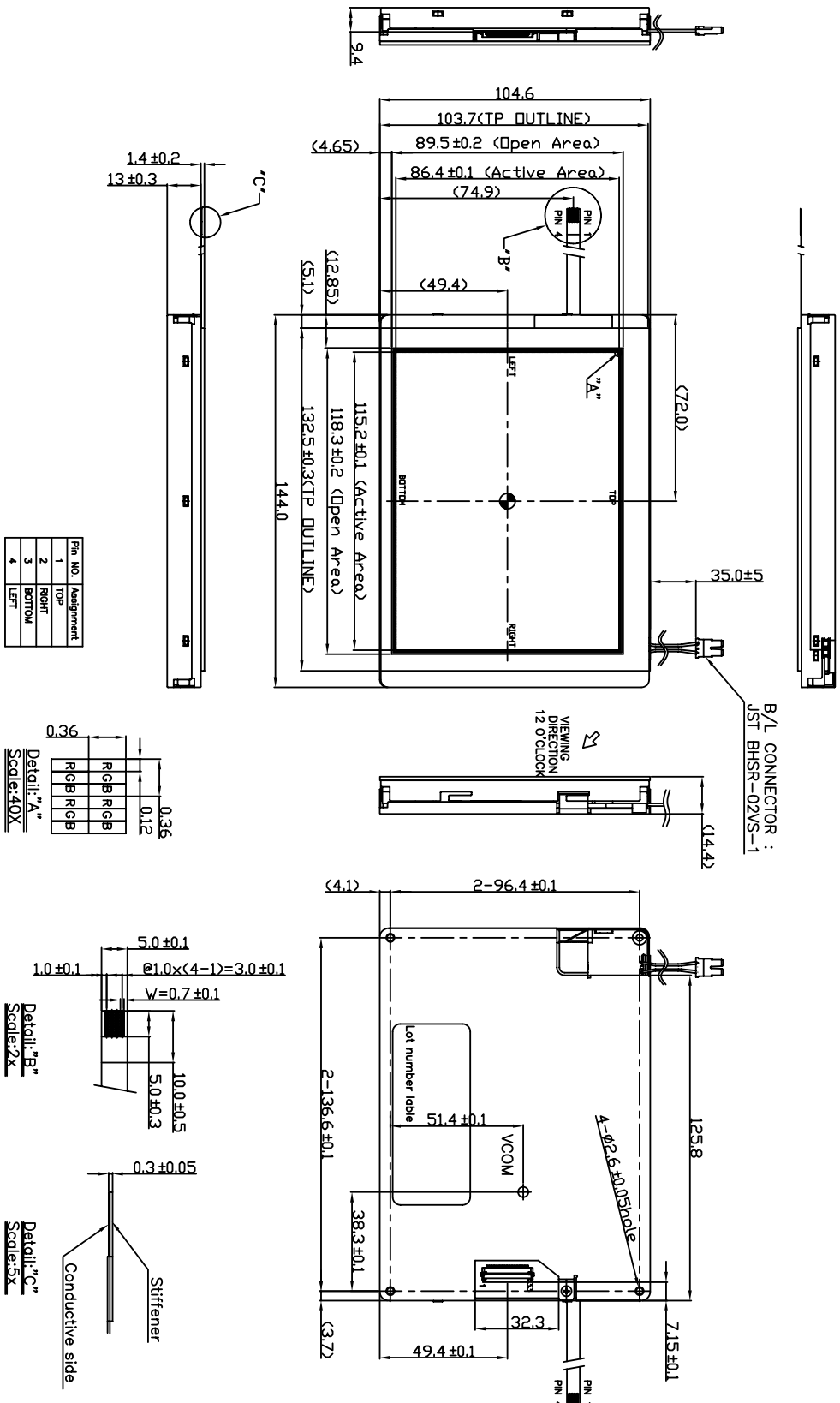
HDA570ST-V

Dimensional Drawing

5.7" , QVGA (TFT), With Touch Screen, White LED Backlight

With TOUCH SCREEN

TOUCH SCREEN connector : KYOCERA-ELCO 046227004100829+



Pin NO.	Assignment
1	TOP
2	RIGHT
3	BOTTOM
4	LEFT

B/L CONNECTOR :
JST BHSR-02VS-1

X-ON Electronics

Largest Supplier of Electrical and Electronic Components

Click to view similar products for [TFT Displays & Accessories](#) category:

Click to view products by [Hantronix](#) manufacturer:

Other Similar products are found below :

[F3ET2-005-150](#) [HDA430T-3G1H](#) [NL8048AC19-14F](#) [NL6448BC20-21D](#) [NB7W-KBA04](#) [NB-ATT01](#) [NB5Q-ATT01](#) [NB5Q-KBA04](#) [NB-CN001](#) [OAI-80038AA-2008-A](#) [315-U004B15300](#) [UMSH-8596MD-34T \(REV D\)](#) [TCG121WXLRXVNNANX35](#) [EIC-LCD-1080P](#) [T-55619GD065J-LW-ABN](#) [TCG104SVLPEANN-AN30](#) [NL6448BC33-70](#) [NL6448BC20-30D](#) [NL10276BC16-06](#) [NL192108AC10-01D](#) [NL12880BC20-05BD](#) [NL8060BC26-35BA](#) [NL8060BC31-50F](#) [TM070DDHG03-40](#) [PTPW16-070WV1S02](#) [PTPW17-070WV1S02](#) [PTPW16-084SV1S02](#) [MTD0300ECP06DF-1](#) [DEM 320240T VMX-PW-N \(A-TOUCH\)](#) [DEM 480128B TMH-PW-N \(A-TOUCH\)](#) [DEM 480272P VMX-PW-N \(C-TOUCH\)](#) [DEM 480272Q VMX-PW-N \(A-TOUCH\)](#) [DEM 480272Q VMX-PW-N \(C-TOUCH\)](#) [DEM 640480E TMH-PW-N \(A-TOUCH\)](#) [DEM 800480K1 TMH-PW-N \(A-TOUCH\)](#) [DEM 800480K1 TMH-PW-N \(C-TOUCH\)](#) [DEM 800480K2 TMH-PW-N \(A-TOUCH\)](#) [DEM 800480K3 TMH-PW-N \(C-TOUCH\)](#) [DEM 800480K4 TMH-PW-N \(A-TOUCH\)](#) [DEM 800480K4 TMH-PW-N \(C-TOUCH\)](#) [4DLCD-35480320-CTP-IPS](#) [4DLCD-35480320-IPS](#) [4DLCD-35480320-RTP-IPS](#) [4DLCD-50800480-CTP-IPS](#) [RFA6400E-AWH-DNG](#) [RFA6400E-AWH-MNN](#) [RFE430V-AZW-DNS](#) [RFF70VA2-1IW-DHS](#) [RFH700A8-AYH-MNN](#) [RFK101VF-1YH-LHG](#)