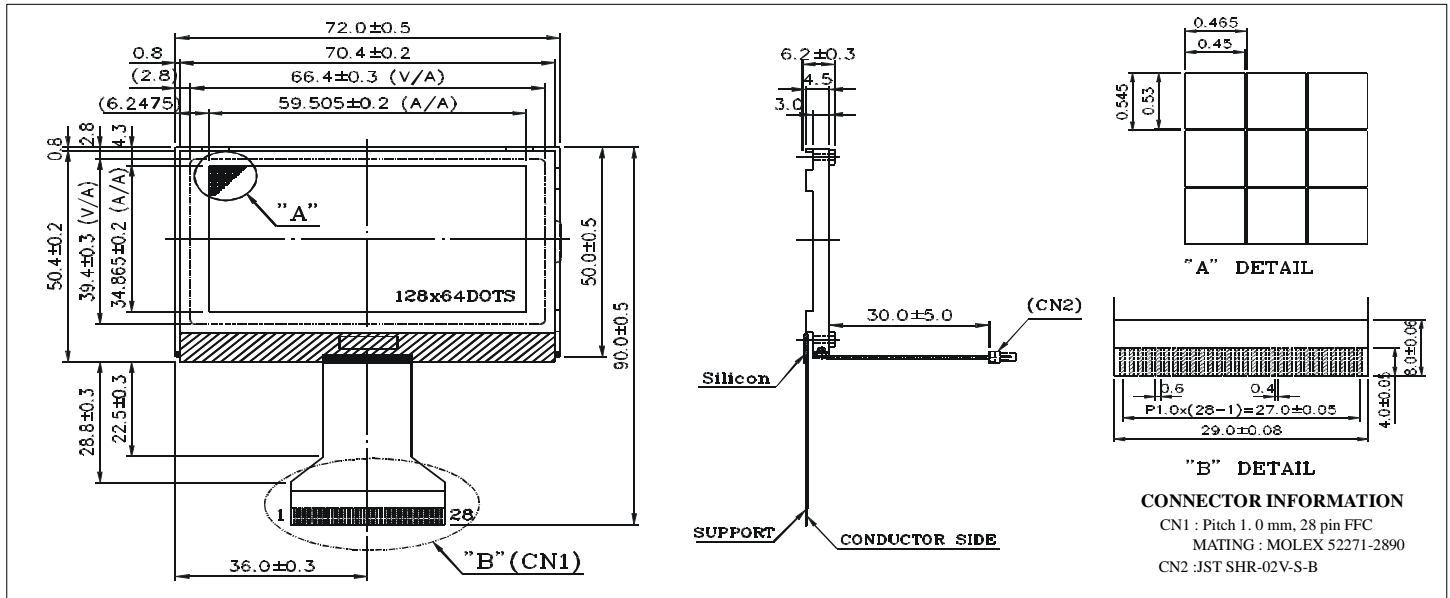


# HDG12864L-6

# Chip On Glass technology

## Dimensional Drawing

128 X 64 Dots Graphic, LED Backlight



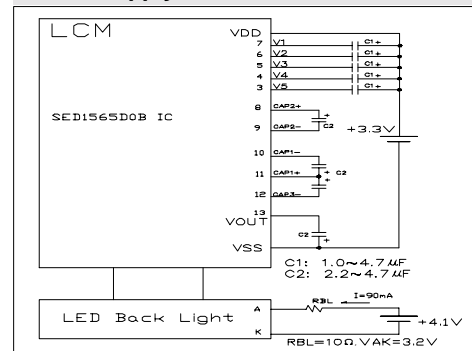
### Features

Back light .....Blue LED  
 Connection .....Flat Flex Cable  
 Options.....STN/FSTN, Transflective Polarizer  
 Built-in Controller.....Epson SED1565D0B or Compatible

### Physical Data

Module Size.....72.0W x 50.4H x 6.2T mm  
 Viewing Area Size.....67.0W x 40.0H mm  
 Dot Pitch.....0.465W x 0.545H mm  
 Dot Size.....0.45W x 0.53H mm  
 Weight.....25.7g

### Power Supply



### Absolute Maximum Ratings

PARAMETER	SYMBOL	MIN	MAX	UNIT
SUPPLY VOLTAGE	$V_{DD}-V_{SS}$	- 0.3	5.5	V
INPUT VOLTAGE	$V_{IN}$	- 0.3	$V_{DD}$	V
OPERATING TEMPERATURE	$T_{OP}$	-20	70	°C
STORAGE TEMPERATURE	$T_{STG}$	-30	80	°C

### Electrical Characteristics (VDD=3.3±0.33V 25°C)

PARAMETER	SYM	CONDITION	MIN	TYP	MAX	UNIT
INPUT HIGH VOLTAGE	$V_{IH}$	-	0.8 $V_{DD}$	-	$V_{DD}$	V
INPUT LOW VOLTAGE	$V_{IL}$	-	0	-	0.2 $V_{DD}$	V
LCD DRIVING VOLTAGE	$V_{DD}-V_L$	$T_A=25^{\circ}C$	8.3	8.6	8.9	V
LCD POWER CURRENT	$I_{DD}$	$V_{DD}=3.3V$	-	0.4	0.6	mA
LED FORWARD VOLTAGE	$V_F$	$I_F=90\text{ mA}$	-	3.2	3.5	V
LED FORWARD CURRENT	$I_F$	$V_F=3.2\text{ V}$	-	90	120	mA
BRIGHTNESS	L	All Dots ON	-	0.59	-	cd/m <sup>2</sup>
		All Dots OFF	-	1.26	-	
DRIVE METHOD		1/64 Duty				

### Pin Connections

PIN NO.	SYMBOL	FUNCTION
1	P/S	Select Paralle/ Serial mode
2	C86	'H': 6800 Series MPU, 'L': 8080 MPU
3 - 7	V5-V1	This is a multi-level power supply for LCD drive
8	CAP2+	DC/DC Voltage Converter capacitors
9	CAP2-	
10	CAP1-	
11	CAP1+	
12	CAP3-	
13	VOUT #	
14	$V_{SS}$	Ground
15	$V_{DD}$	Power supply for Logic
16	D7 (SI)	Data Bus 7 or Serial Data Input
17	D6 (SCL1)	Data Bus 6 or Serial Clock Input
18 - 23	D5-D0	Data Bus
24	$\overline{RD}$ (E)	Enable Clock Input
25	$\overline{WR}$ ( $\overline{R}/W$ )	Signal to select Read or Write
26	A0	Control/Data Select Signal
27	$\overline{RES}$	Reset Signal
28	$\overline{CS1}$	Chip Select Signal

#Has built-in inverter for negative power supply

## X-ON Electronics

Largest Supplier of Electrical and Electronic Components

*Click to view similar products for [LCD Graphic Display Modules & Accessories](#) category:*

*Click to view products by [Hantronix](#) manufacturer:*

Other Similar products are found below :

[HDM64GS12L-Y11S](#) [MGLS-240128-Z05](#) [DEM 128064U FGH](#) [DEM 240064E FGH-PW](#) [11557](#) [18396](#) [15932](#) [TMH2GDB](#) [HDM64GS24L-2-Y14S](#) [RG12864C-YHW-V](#) [RG12864K-BIW-VBG](#) [RG320240A1-BIW-V](#) [DEM 128064A SBH-PW-N](#) [DEM 128064B SBH-PW-N](#) [DEM 128064G FGH-PW](#) [DEM 128064O FGH-PW](#) [DEM 128064O SBH-PW-N](#) [DEM 128064P SBH-PW-N](#) [DEM 128064Q SBH-PW-N](#) [DEM 128128D FGH-PW](#) [DEM 240064B FGH-PW](#) [DEM 240064B SBH-PW-N](#) [DEM 320240B FGH-PW-N](#) [EA W240-7KHLW](#) [16239](#) [RX12864A1-BIW](#) [RX240128A-FHW](#) [RX240160A-FHW](#) [18370](#) [19340](#) [RG24064A-TIW-V](#) [EA FL-14P](#) [GLK19264A-7T-1U-TCI](#) [GLK19264A-7T-1U-USB-WB](#) [DEM 320240I SBH-PW-N](#) [GLK24064R-25-1U-WB](#) [DEM 240160A FGH-PW](#) [RG12864B1-BIW-V](#) [RG240128B-BIW-V](#) [RG24064A-FHW-V](#) [DEM 122032B SYH-LY](#) [DEM 128064A FGH-PW \(A-TOUCH\)](#) [DEM 128064A SBH-PW-N \(A-TOUCH\)](#) [DEM 128064B FGH-PW](#) [DEM 128064H SBH-PW-N](#) [DEM 128064J FGH-PW](#) [DEM 128064K SBH-PW-N](#) [DEM 128064P FGH-PW](#) [DEM 320240C SBH-PW-N](#) [DEM 320240I FGH-PW](#)