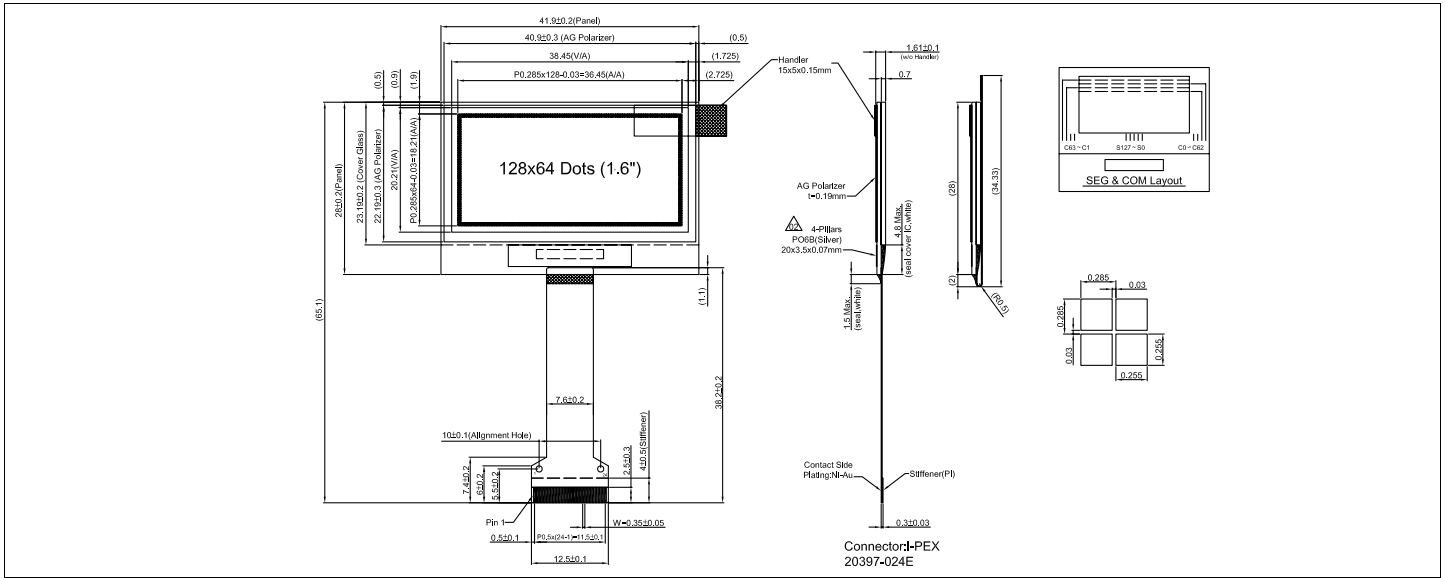


HDR12864-4

Dimensional Drawing

128 X 64 Dots Graphic, Yellow OLED Display



Features

- Viewing Angle.....Wide (160 degrees)
- High Contrast.....2000:1
- Fast Response Time.....10 usec
- Built-in DC-DC Converter
- Built-in Controller.....SSD1325

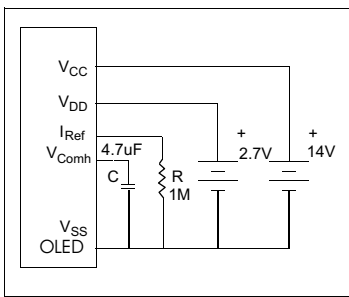
Physical Data

- Module Size.....41.9W x65.1H x 1.61T mm
- Viewing Area Size.....38.4W x 20.21H mm
- Dot Pitch.....0.285W x 0.285H mm
- Dot Size.....0.255W x 0.255H mm
- Weight.....3.75gm

Electrical Characteristics (VCC = 14 ± 5% 25°C)

PARAMETER	SYM	CONDITION	MIN	TYP	MAX	UNIT
OPERATING VOLTAGE	VDD	-	2.4	2.7	3.5	V
OPERATING VOLTAGE	VCC	-	13.5	14	14.5	V
INPUT HIGH VOLTAGE	V _{IH}	-	0.8*V _{DD}	-	V _{DD}	V
INPUT LOW VOLTAGE	V _{IL}	-	0	-	0.2V _{DD}	V
OPERATING CURRENT	I _{DD}	All pixels on	-	-	650	uA
OPERATING CURRENT	I _{CC}	All pixels on	-	18	20	mA
POWER CONSUMPTION	P _D	All pixels on	-	252	280	mW
BRIGHTNESS	L	Average	60	80	-	cd/m ²
DRIVE METHOD	1/64 Duty					

Power Supply



Absolute Maximum Ratings

PARAMETER	SYMBOL	MIN	MAX	UNIT
SUPPLY VOLTAGE	VDD	-0.3	3.5	V
SUPPLY VOLTAGE	VCC	8	16	V
INPUT VOLTAGE	V _{IN}	-0.3	V _{DD} + 0.3	V
OPERATING TEMPERATURE	T _{OP}	-40	70	°C
STORAGE TEMPERATURE	T _{STG}	-40	85	°C
LIFE TIME (60/100 Cd/m ²)		40/24k	-	Hrs

Pin Connections

PIN NO.	SYMBOL	FUNCTION
1	VSS	Ground Pin
2	VSL	SEG Signal
3	VCC	Power Supply for OLED driver
4	VCOMH	COM - Voltage Reference Pin
5	VDD	Power Supply for internal logic
6	Bs1	MCU interface selection input
7	Bs2	MCU interface selection input
8	CS#	Chip select input
9	RES#	Hardware reset input
10	D/C#	Data-command control input
11	R/WR#	Write data input
12	E/RD#	Read data input
13	D0	Bi-directional data bus
14	D1	Bi-directional data bus
15	D2	Bi-directional data bus
16	D3	Bi-directional data bus
17	D4	Bi-directional data bus
18	D5	Bi-directional data bus
19	D6	Bi-directional data bus
20	D7	Bi-directional data bus
21	IREF	Reference input (connect recom. Res. R)
22	VCC	Power Supply for logic
23	N/C	No Connection
24	VSS	Ground Pin

X-ON Electronics

Largest Supplier of Electrical and Electronic Components

Click to view similar products for [OLED Displays & Accessories](#) category:

Click to view products by [Hantronix](#) manufacturer:

Other Similar products are found below :

[OLED-100H008A-RPP5N00000](#) [OLED-100H016B-RPP5N00000](#) [OLED-200H016A-LPP5N00000](#) [OLED-100H008A-GPP5N00000](#) [OLED-100H008A-LPP5N00000](#) [OLED-100H032A-BPP5N00000](#) [DEP 128160A-W](#) [OLED-100H016F-RPP5N00000](#) [OLED-100H016A-LPP5N00000](#) [OLED-128Y032A-WPP3N00000](#) [OLED-100H016A-WPP5N00000](#) [OLED-100H016H-GPP5N00000](#) [OLED-016O002B-BPP5N00000](#) [OLED-096Y064A-LPP3N00000](#) [OLED-096O064A-BPP3N00000](#) [OLED-128Y064C-LPP3N00000](#) [OLED-096Y064B-LPP3N00000](#) [OLED-128Y032A-LPP3N00000](#) [OLED-096Y064B-BPP3N00000](#) [REX004864AWPP3N00000](#) [REX009616AWPP3N00000](#) [REG010016FBPP5N00100](#) [REG010016FGPP5N00100](#) [REG010016FWPP5N00100](#) [REG010032AWPP5N00100](#) [REX064128AWPP3N0Y000](#) [14747](#) [O100H016DLPP5N0000](#) [O100H016EGPP5N0000](#) [O016O002CLPP5N0000](#) [REG010008AGPP5N00000](#) [REG010008AWPP5N00000](#) [REG010016CRPP5N00000](#) [REG010016DBPP5N00000](#) [REG010016ERPP5N00000](#) [REG010032BYPP5N00000](#) [REX012832EWAP3N00000](#) [DEP 100032A-W](#) [DEP 100032A-Y](#) [DEP 16202-Y](#) [DEP 20203-Y](#) [DEP 20401-Y](#) [17009](#) [OLED-016N002B-RPP5N00000](#) [OLED-016N002B-WPP5N00000](#) [OLED-016N002H-RPP5N00000](#) [OLED-020N004B-WPP5N00000](#) [OLED-100H008A-WPP5N00000](#) [OLED-100H016B-BPP5N00000](#) [OLED-100H016B-WPP5N00000](#)