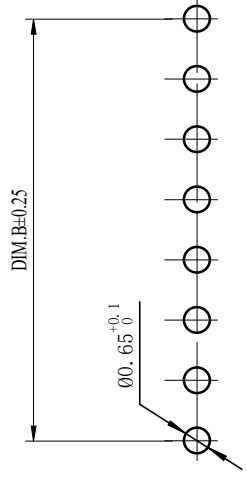
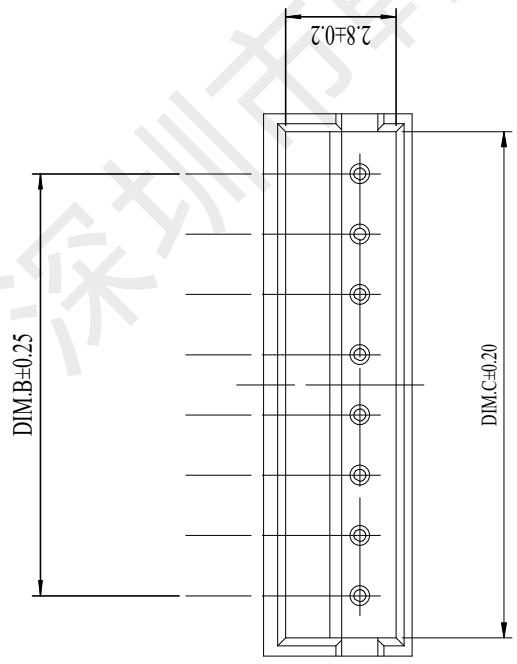
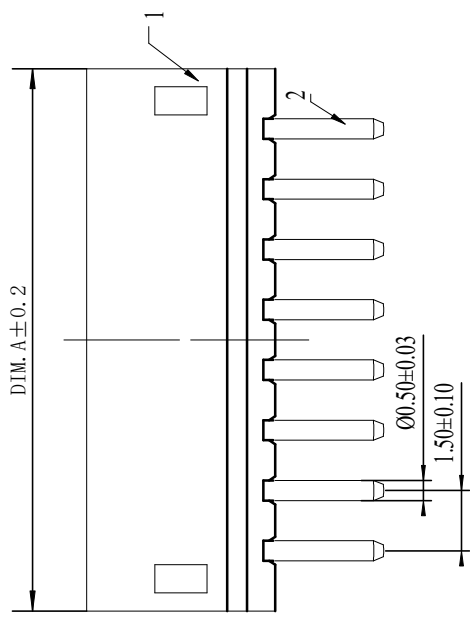


| REV. | EC# | DESCRIPTION | DATE       | DRAWN | CHECK | APPROVED |
|------|-----|-------------|------------|-------|-------|----------|
| 1.00 |     | 层叠设计        | 2018-04-22 |       |       |          |
|      |     |             |            |       |       |          |
|      |     |             |            |       |       |          |

| REV. | EC# | DESCRIPTION | DATE | DRAWN | CHECK | APPROVED |
|------|-----|-------------|------|-------|-------|----------|
|      |     |             |      |       |       |          |
|      |     |             |      |       |       |          |
|      |     |             |      |       |       |          |



PCB Layout



适应基板厚度: 1.2mm~1.6mm  
 温度范围: -25°C~85°C  
 额定电压: 250V AC/DC  
 额定电流: 2A  
 绝缘电阻: ≥1000MΩ  
 耐压: 500V AC/minute

|     |       |       |       |
|-----|-------|-------|-------|
| 15  | 24.00 | 21.00 | 23.10 |
| 14  | 22.50 | 19.50 | 21.60 |
| 13  | 21.00 | 18.00 | 20.10 |
| 12  | 19.50 | 16.50 | 18.60 |
| 11  | 18.00 | 15.00 | 17.10 |
| 10  | 16.50 | 13.50 | 15.60 |
| 9   | 15.00 | 12.00 | 14.10 |
| 8   | 13.50 | 10.50 | 12.60 |
| 7   | 12.00 | 9.00  | 11.10 |
| 6   | 10.50 | 7.50  | 9.60  |
| 5   | 9.00  | 6.00  | 8.10  |
| 4   | 7.50  | 4.50  | 6.60  |
| 3   | 6.00  | 3.00  | 5.10  |
| 2   | 4.50  | 1.50  | 3.60  |
| Pin | DIM.A | DIM.B | DIM.C |

| NO. | PIN     | NAME | QTY | DESCRIPTION             |
|-----|---------|------|-----|-------------------------|
| 2   | n       | PCS  |     | 材质:黄铜,电镀:镀亮锡60u"MIN     |
| 1   | Housing | 1    | PCS | 材质:PA66 (UL94V-0),颜色:米色 |

| DRAW :              | DESIGN :            | CHECK :    | APPROVED : | CUSTOMER DRAWING |
|---------------------|---------------------|------------|------------|------------------|
| 黄彬                  | 张伟                  | 罗小春        |            |                  |
| 2018-04-22          | 2018-04-22          | 2018-04-22 |            |                  |
| TITLE: 针座           | SERIES: 1502 SERIES | P/N:       | REV. 1.00  | SCALE N/A        |
| DRAW NAME: HX002060 |                     | DRAW NO.   |            | SHEET: 1/1       |

| GENERAL TOLERANCES |        |        |
|--------------------|--------|--------|
| DIM                | TOL    | DEG    |
| X                  | DIM    | DEG    |
| X°                 | X°     | +3.00° |
| X.X                | X.X°   | +2.00° |
| X.XX               | X.XX°  | +1.00° |
| X.XXX              | X.XXX° | +0.15° |

- 技术要求:
- 1) 材质:见附表;
  - 2) 电镀:见附表;
  - 3) 塑件表面平整、光洁、无毛刺、气泡、烧焦、变形、浇口无拉伤、多料或缺料等不良现象;
  - 4) 端子表面无氧化、电镀不良等现象。

深圳市韩下电子有限公司  
 HANKIA  
 HX002060



深圳市韩下电子有限公司

Shenzhen Hanxia Electronic Co., Ltd  
Tel: 0755-33819206 Fax: 0755-27597491

## 承 认 书

### SPECIFICATION FOR APPROVAL

客 户 Customer:

\_\_\_\_\_

产品名称 Project:

针座

规格型号 Part No:

HX002060

#### 贵公司承认印 Approval signatures

| 料 号/Part No. | 签 章/Signatures |
|--------------|----------------|
|              |                |

日期 Date:

|             |     |  |
|-------------|-----|--|
| 拟制/Drawn    | 黄彬  |  |
| 审核/Check    | 张伟  |  |
| 批准/Approved | 罗小春 |  |

## 1、SCOPE: (适用范围)

1.1 This specification covers production and inspection of Connector.

本规范内容适用于本公司普通系列型条形连接器（针座）产品的生产与检验。

## 2、USE CONDITION: (使用条件)

2.1 Ambient temperature Range:-25℃~+ 85℃

环境温度：-25℃~+85℃

2.2 Applicable Wire Sizes:AWG#26~#32

适用线规： AWG#26~#32

2.3 Applicable PC board thickness:1.2~1.6mm

适用 PC 板厚度： 1.2~1.6 mm

## 3、Appearance and Dimension: (外观及尺寸)

3.1 Appearance:Product surface without defect、dirt、crack、and mechanical damang, Contact without rust,plating not oxidized and not peeled.

产品表面不应有对制品有害的缺陷、污垢、裂痕及机械损伤；接触件无锈蚀、镀层氧化、脱落等现象。

3.2 Dimension:According to drawings

外形尺寸：依照附图

3.3 Exchangable:Exchangable with same specification products.

互换性：相同规格应能互换

## 4、Material:

材 料 (以图纸为准)

| P/N<br>零件名称                   | Type<br>类 型        | Material<br>材 料                  | Finish<br>表面处理                          | Expiain<br>说 明    |
|-------------------------------|--------------------|----------------------------------|---|-------------------|
| Terminal<br>端子                | Contact<br>插 簧     | Phosphor bronze<br>锡青磷铜 厚 0.15mm | Tin Plating:3~4 μ m<br>镀锡: 3~4 μ m      | RoHS<br>Compliant |
| Housing<br>孔 座                | Plastic<br>塑 壳     | Nylon66 UL94V-0                  | Color:White<br>颜色: 白色                   |                   |
| Opening Wafer<br>开口针座         | Contact<br>插 针     | Phosphor bronze<br>锡青磷铜 厚 0.30mm | Tin Plating:3~4 μ m<br>镀锡: 3~4 μ m      |                   |
|                               | Plastic<br>塑 壳     | Nylon46 UL94V-0                  | Color: Beige<br>颜色: 米色                  |                   |
| Lips Wafer<br>闭口针座            | Contact<br>插 针     | Phosphor bronze<br>锡青磷铜 厚 0.30mm | Gold Plating:3~4 μ " m<br>镀金: 3~4 μ " m |                   |
|                               | Plastic<br>塑 壳     | PBT UL94V-0                      | Color: White<br>颜色: 白色                  |                   |
| Tiepian Wafer<br>卧贴针座<br>立贴针座 | Contact<br>插 针     | Phosphor bronze<br>锡青磷铜 厚 0.30mm | Tin Plating:3~4 μ m<br>镀锡: 3~4 μ m      |                   |
|                               | Solder tabs<br>焊护耳 | Phosphor bronze<br>锡青磷铜 厚 0.25mm | Tin Plating:3~4 μ m<br>镀锡: 3~4 μ m      |                   |
|                               | Plastic<br>塑 壳     | Nylon46 UL94V-0                  | Color: Beige<br>颜色: 米色                  |                   |

## 5、Electrical Performance:

### 电气性能

| N0.<br>序号 | Ltem<br>项目                    | Requirement<br>技术要求   |
|-----------|-------------------------------|-----------------------|
| 5.1       | Voltage Rated<br>额定电压         | 250V AC DC            |
| 5.2       | Current Rated<br>额定电流         | 2A AC DC              |
| 5.3       | Contact Resistance<br>接触电阻    | $\leq 0.02 \Omega$    |
| 5.4       | Insulation Resistance<br>绝缘电阻 | $\geq 100 M\Omega$    |
| 5.5       | Dielectric Strength<br>耐压     | $\geq 500V$ AC/minute |

## 6、Mechanical Performance:

### 机械性能

| N0.<br>序号 | Ltem<br>项目                               | Requirement<br>技术要求 |
|-----------|--|---------------------|
| 6.1       | Male contact Retention force<br>PIN 针固定力 | $\geq 10N$ per pin  |
| 6.2       | Female contact Retention force<br>端子固定力  | $\geq 10N$ per pin  |
| 6.3       | Plug-in force<br>插入力                     | $\leq 3N$ per pin   |
| 6.4       | Plug-out force<br>拔出力                    | $\geq 0.5N$ per pin |

## 7、Endurance Characteristics:

### 环境性能

| N0.<br>序号 | Ltem<br>项目            | Requirement<br>技术要求  |
|-----------|-----------------------|--|
| 7.1       | Soldering rest<br>可焊性 | Time: $2.5 \pm 0.5S$<br>时间: $2.5 \pm 0.5S$<br><br>Temperature: $260 \pm 5^\circ C$<br>温度: $260 \pm 5^\circ C$<br><br>Area of Soldering: $\geq 95\%$<br>焊锡面积: $\geq 95\%$ |

|     |                                      |   |
|-----|--------------------------------------|---|
| 7.2 | Resistance to soldering Heat<br>耐焊接热 | <p>Time: 5 ± 1S<br/>时间: 5 ± 1S</p> <p>Temperature: 260 ± 5°C<br/>温度: 260 ± 5°C</p> <p>Appearance: NO Damage<br/>外观: 无损坏</p>   |
| 7.3 | Heat test<br>耐热性                     | <p>Time: 96h<br/>时间: 96 小时</p> <p>Temperature: +85 ± 3°C<br/>温度: +85 ± 3°C</p> <p>Appearance: NO Damage<br/>外观: 无损坏</p> <p>Contact resistance: ≤ 20 mΩ<br/>接触电阻: ≤ 20 mΩ</p>  |
| 7.4 | Cold test<br>耐冷性                     | <p>Time: 48h<br/>时间: 48 小时</p> <p>Temperature: -25 ± 3°C<br/>温度: -25 ± 3°C</p> <p>Appearance: NO Damage<br/>外观: 无损坏</p> <p>Contact resistance: ≤ 20 mΩ<br/>接触电阻: ≤ 20 mΩ</p>  |
| 7.5 | Temperature Cycling<br>温度循环          | <p>Low temperature: -25 ± 3°C<br/>低温: -25 ± 3°C</p> <p>High temperature: 85 ± 3°C<br/>高温: 85 ± 3°C</p> <p>For 5 cycles. test after keeping in Normal Condition for 30 min.<br/>5 次循环后, 放置在正常环境中 30 分钟, 进行测试</p> <p>Appearance: NO Damage<br/>外观: 无损坏</p> <p>Contact resistance: ≤ 20 mΩ<br/>接触电阻: ≤ 20 mΩ</p> |

|     |                                |  |
|-----|--------------------------------|--|
| 7.6 | Invariablenes humidity<br>恒定湿热 | <p>Temperature: <math>60 \pm 2^{\circ}\text{C}</math><br/>温度: <math>60 \pm 2^{\circ}\text{C}</math></p> <p>Relative humidity: 90%-96% RH<br/>相对湿度: 90%-96% RH</p> <p>Tim: 96h<br/>时间: 96 小时<br/>Appearance: NO Damage<br/>外观: 无损坏</p> <p>Contact resistance: <math>\leq 20 \text{ m}\Omega</math><br/>接触电阻: <math>\leq 20 \text{ m}\Omega</math></p> <p>Insulation Resistance: <math>\geq 100 \text{ M}\Omega</math><br/>绝缘电阻: <math>\geq 100 \text{ M}\Omega</math></p>   |
| 7.7 | Salt Spray<br>盐雾试验             | <p>Salt concentration: <math>5 \pm 1\%</math><br/>浓度: <math>5 \pm 1\%</math></p> <p>Temperature: <math>35 \pm 2^{\circ}\text{C}</math><br/>温度: <math>35 \pm 2^{\circ}\text{C}</math></p> <p>Tim: <math>16 \pm 2\text{h}</math><br/>时间: <math>16 \pm 2</math> 小时</p> <p>After salt is removed by running wafer and A drop is removed ,it is measured.</p> <p>把试验样品从试验箱顶悬挂下来, 采用浓度(<math>5 \pm 1</math>) %的氯化钠溶液, 连续雾化 16 小时, 试验后用流动的蒸馏水轻轻洗去表面沉积物, 在常温常驻湿条件下恢复 1-2 小时, 外观无损伤</p> <p>Appearance: NO Damage<br/>外观: 无损坏</p> <p>Contact resistance: <math>\leq 20 \text{ m}\Omega</math><br/>接触电阻: <math>\leq 20 \text{ m}\Omega</math></p> |



## 8、 Packaging Transportation Storage

包装、运输、贮存

### 8.1 Packaging

包装

- (1) **The packing of plastic inner is the plastic bag,the packing of inner terminal is panel mounting attach material packing, marked with product name, specification model, quantity, date in produced.**

塑件内包装为塑料袋， 端子内包装为盘装带料包装， 装（贴）入合格证， 注明产品名称、规格型号、数量生产日期

- (2) **Exterior package is carton, facing the packing list, the packing list marked with product name, specificcation model, quantity, date of dispatch.**

外包装为纸箱，贴装箱单、装箱单上注明产品名称、规格型号、数量、出货日期

- (3) **The product in the box must not rock.**

产品在箱内不晃动

### 8.2 Transportation

运输

**Allow for any way transportation, can't get wet and mechanical in jury.**

允许用任何方式运输，勿淋湿及机械性损伤

### 8.3 Storage

贮存

**The connector of packing finished should be in the ambient temperature between-10℃ to+40℃, Relative humidity≤80%. To store in storehouse does not have acidic, alkaline air and other corrosive gas in the ambient air.**

包装完毕的连接器应在环境温度为-10℃~+40℃，相对湿度≤80%，周围空气中没有酸性，碱性及其它腐蚀性气体的库房中贮存

## X-ON Electronics

Largest Supplier of Electrical and Electronic Components

*Click to view similar products for [Headers & Wire Housings](#) category:*

*Click to view products by [hanxia](#) manufacturer:*

Other Similar products are found below :

[0015917161](#) [0022155065](#) [57102-F02-18ULF](#) [58102-G61-06LF](#) [582553-1](#) [01.001.5753.1](#) [0050291907](#) [02.125.8002.8](#) [609-3404](#) [61062-3](#)  
[CSU011177004](#) [622-0430](#) [622-3653LF](#) [63453-116](#) [636-1030](#) [636-1427](#) [636-3427](#) [636-4007](#) [641938-9](#) [65495-038](#) [65692-001LF](#) [65781-018](#)  
[65781-047](#) [65817-010LF](#) [65817-015LF](#) [67095-007LF](#) [67601157](#) [68631-112](#) [68645-018](#) [699319-000](#) [70.362.1628.0](#) [70-4210](#) [70-4226B](#) [70-](#)  
[4853B](#) [71.350.2428.0](#) [733-134](#) [733-162](#) [760-3052](#) [MHR-64-VUAL](#) [80.063.4001.1](#) [800-90-001-10-001000](#) [801-43-002-10-013000](#)  
[801-43-006-10-002000](#) [803-43-024-10-001000](#) [803-93-012-10-001000](#) [8-1437020-4](#) [819-22-004-30-001101](#) [820-22-006-30-001101](#)  
[820-22-008-30-001101](#) [821-22-002-10-001101](#)