



DIN Signal har-bus 64 male connector



General information

Design	IEC 61076-4-113	type: har-bus64 male, special version
No. of contacts	max. 160	
Contact spacing	2,54mm	
Test voltage	1000V	
Contact resistance	max. 20mOhm for rows a, b, c	max. 30mOhm for rows d, z
Insulation resistance	min. 10 ¹⁰ Ohm	
Working current	1A at 70°C (see derating diagram)	
Temperature range	-55°C ... +125°C	
Termination technology	solder	

Clearance & creepage		maximum distance		
		rows a, b, c	rows d, z	
between 2 rows	clearance	1,2mm	1,2mm	
	creepage	1,2mm	1,2mm	
	between 2 contacts in a row	clearance	1,2mm	1,0mm
		creepage	1,2mm	1,0mm

Insertion and withdrawal force	max. 160N
PCB thickness	min. 1,6mm
Mating cycles	PL 1 acc. to IEC 61076-4-113 500 mating cycles
UL file	E102079
RoHS - compliant	No (for compliant version see catalogue)
Leadfree	No (for compliant version see catalogue)

Insulator material

Material	LCP (Liquid Cristal Polymer)
Color	nature
UL classification	UL 94-V0
Material group acc. IEC 60664-1	IIIa (175 < CTI < 400)

Contact material

Contact material	Copper alloy
Plating termination zone	SnPb over Ni
Plating contact zone	min 1,27µm (50µin) Au over 2µm Ni

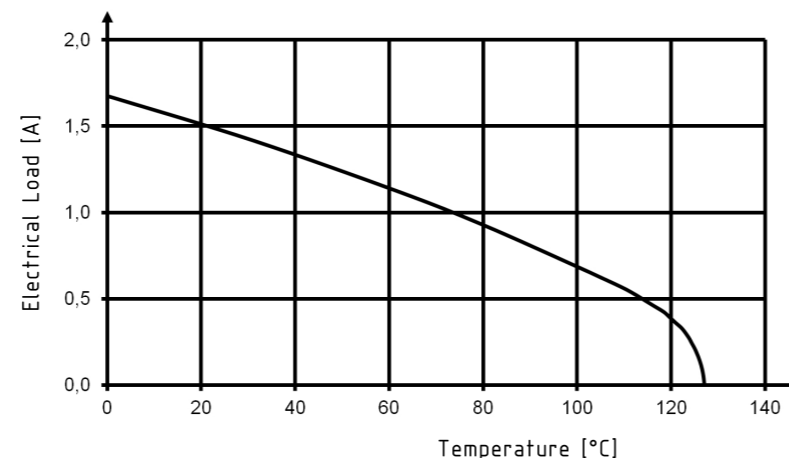
Derating diagram acc. to IEC 60512-5 (Current carrying capacity)

The current carrying capacity is limited by maximum temperature of materials for inserts and contacts including terminals.

The current capacity curve is valid for continuous, non interrupted current loaded contacts of connectors when simultaneous power on all contacts is given, without exceeding the maximum temperature.

Control and test procedures according to DIN IEC 60512-5

With selective loading higher currents can be transmitted. The requirements according to VITA 1.7 are fulfilled.



Soldering instructions

The connectors should be protected when being soldered in a dip, flow or film soldering baths. Otherwise, they might become contaminated as a result of soldering operations or deformed as a result of overheating.

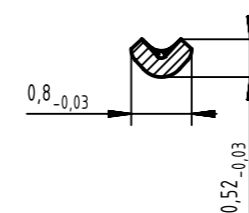
(1) For prototypes and short runs protect the connectors with an industrial adhesive tape, e.g. Tesaband 4331 (www.tesa.de). Cover the underside of the connector moulding and the adjacent parts of the pcb as well as the open sides of the connector. This will prevent heat and gases of the soldering apparatus from damaging the connector. About 140 + 5 mm of the tape should suffice.

(2) For large series a jig is recommended. Its protective cover with a fast action mechanical locking device shields the connectors from gas and heat generated by the soldering apparatus. As an additional protection a foil can be used for covering the parts that should not be soldered.

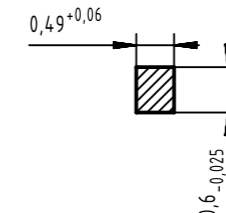
Cross section of solder pins

Recommend plated hole diameter: $\varnothing 1 \pm 0,1\text{mm}$

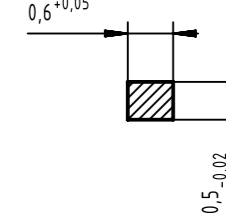
Row z: $A = 0,21\text{mm}^2 - 0,25\text{mm}^2$



Row a, b, c: $A = 0,28\text{mm}^2 - 0,33\text{mm}^2$



Row d: $A = 0,29\text{mm}^2 - 0,33\text{mm}^2$



	All rights reserved	Created by TADJE	Inspected by ELLERMANN	Standardisation HOFFMANN	Date 2013-10-30	State Final Release
	Department EC PD - DE	Title DIN Signal har-bus 64 male connector		Doc-Key / ECM-Nr. 100553548/UGD/001/A 50000067793		
HARTING Electronics GmbH D-32339 Espelkamp		Type DS	Number 02011200202		Rev. A	Page 1/1

	All Dimensions in mm Original Size DIN A3	Scale 1:1	Free size tol.	Ref.
				Sub. DS 02011200202 / EC01482 / 21.04.2011

X-ON Electronics

Largest Supplier of Electrical and Electronic Components

Click to view similar products for [DIN 41612 Connectors](#) category:

Click to view products by [HARTING](#) manufacturer:

Other Similar products are found below :

[004.767](#) [608489050008049](#) [691327-1](#) [74670-0732](#) [74680-0340](#) [75880-0015](#) [76453-0014](#) [86093159ALF](#) [9732967801](#) [QLC260R](#)
[120X10019X](#) [120X10089X](#) [122A10249X](#) [122A10669X](#) [122A11089X](#) [122A13089X](#) [122A10089X](#) [122A10129X](#) [122A10349X](#)
[122A13359X](#) [1377391-4](#) [DIN-048CPC-SR1-MH](#) [1393583-2](#) [1393726-7](#) [140X10129X](#) [143-1913-000](#) [143-1908-000](#) [1484472-1](#) [2110070-1](#)
[2110070-2](#) [CBC20T00-008FDS5-0-1-002VR](#) [172699-5036](#) [2-1393557-4](#) [2-1437084-2](#) [CTJ720E01B-6141](#) [394506](#) [419-2080-402](#)
[V42254B2202C968](#) [419-2086-201](#) [419-2087-002](#) [448657-1](#) [448847-3](#) [5-1393755-9](#) [02990000004](#) [054302](#) [043556](#) [09062483201750](#)
[0850033067](#) [09031646555](#) [09061486901840](#)