

har-modular fixing rail 25.30

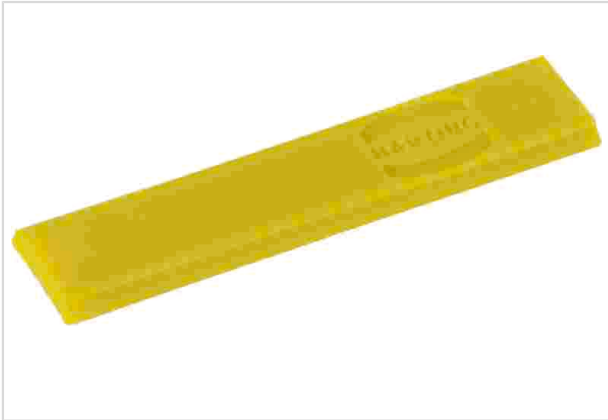


Image is for illustration purposes only. Please refer to product description.

Part number	02 09 500 1005
Specification	har-modular fixing rail 25.30
HARTING eCatalogue	https://b2b.harting.com/02095001005

Identification

Category	Accessories
Series	har-modular®
Type of accessory	Fixing rail

Technical characteristics

Length	25.3 mm
Isolation group	I (600 ≤ CTI)
Moisture Sensitivity Level (MSL)	1 acc. to ECA/IPC/JEDEC J-STD-020D

Material properties

Colour (accessories)	Yellow
RoHS	compliant
ELV status	compliant
China RoHS	e
REACH Annex XVII substances	No
REACH ANNEX XIV substances	No
REACH SVHC substances	No
California Proposition 65 substances	No

Specifications and approvals

UL / CSA	UL 1977 ECBT2.E102079 CSA-C22.2 No. 182.3 ECBT8.E102079
----------	--



Pushing Performance

Commercial data

Packaging size	100
Net weight	0.2 g
Country of origin	Romania
European customs tariff number	85389099
eCl@ss	27440292 Connector component (accessories)

X-ON Electronics

Largest Supplier of Electrical and Electronic Components

Click to view similar products for [High Speed/Modular Connectors](#) category:

Click to view products by [HARTING](#) manufacturer:

Other Similar products are found below :

[89099-112](#) [650827-1](#) [1410191-1](#) [1410337-1](#) [1410971-4](#) [1467833-1](#) [2065387-1](#) [2187307-1](#) [2000875-1](#) [FSR-40](#) [2169868-2](#) [22354-8](#)
[0761659608](#) [10061709-103LF](#) [10123159-301LF](#) [70472-1005LF](#) [72388-0021LF](#) [030-2415-003/100 PK](#) [532939-1](#) [3-1469268-7](#) [UMK-SE](#)
[11,25-1](#) [74748-102LF](#) [10041743-101LF](#) [10066670-100002LF](#) [249-4515-000](#) [DL2-2J/S](#) [2000713-8](#) [10124313-101LF](#) [3011-21](#) [EBTF-4-10-](#)
[2.0-S-RA-1](#) [50351-1100ELF](#) [4395800100](#) [1934937-1](#) [76760-0039](#) [88913-111LF](#) [2286118-1](#) [2286119-1](#) [2286120-1](#) [2287838-1](#) [76021-0045](#)
[2352032-1](#) [10056103-1050031LF](#) [1645694-1](#) [2-2169869-2](#) [76152-0021](#) [EBTF-6-12-2.0-S-RA-1-R](#) [10120766-101LF](#) [10153321-112LF](#)
[75874-0002](#) [76764-0003](#)