

DIN-Signal high voltage f, 2,8KV solder

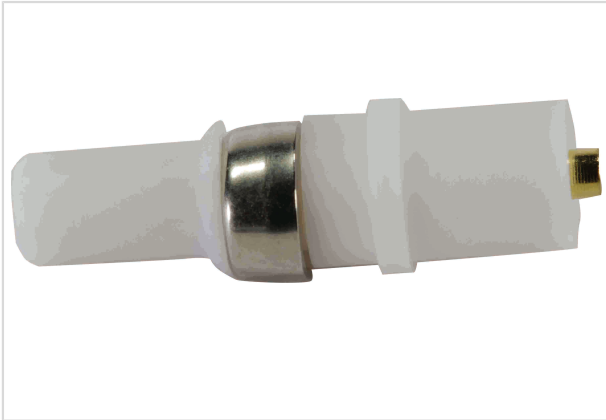


Image is for illustration purposes only. Please refer to product description.

Part number	09 03 000 6240
Specification	DIN-Signal high voltage f, 2,8KV solder
HARTING eCatalogue	https://b2b.harting.com/09030006240

Identification

Category	Contacts
Series	DIN 41612
Type of contact	Solder contact
Description of the contact	Straight
Contacts for	DIN 41612 Type M DIN 41612 Type M invers DIN 41612 Type MH 21+5 DIN 41612 Bauform M 0+2 har-modular [®] M module, female, straight

Version

Gender	Female contact for female connectors
Manufacturing process	Turned contacts

Technical characteristics

Rated voltage	2,800 V
Performance level	1
Mating cycles	≥500

Material properties

Material (contacts)	Copper alloy
Surface (contacts)	Noble metal over Ni Mating side
RoHS	compliant with exemption
RoHS exemptions	6(c): Copper alloy containing up to 4 % lead by weight



Pushing Performance

Material properties

ELV status	compliant with exemption
China RoHS	50
REACH Annex XVII substances	No
REACH ANNEX XIV substances	No
REACH SVHC substances	Yes
REACH SVHC substances	Lead
ECHA SCIP number	339476a1-86ba-49e9-ab4b-cd336420d72a
California Proposition 65 substances	Yes
California Proposition 65 substances	Lead

Specifications and approvals

Specifications	DIN 41626
----------------	-----------

Commercial data

Packaging size	100
Net weight	1.17 g
Country of origin	Czechia
European customs tariff number	85366990
eCl@ss	27440204 Contact for industrial connectors

X-ON Electronics

Largest Supplier of Electrical and Electronic Components

Click to view similar products for [DIN 41612 Connectors](#) category:

Click to view products by [HARTING](#) manufacturer:

Other Similar products are found below :

[004.767](#) [608489050008049](#) [691327-1](#) [74670-0732](#) [74680-0340](#) [75880-0015](#) [76453-0014](#) [86093159ALF](#) [9732967801](#) [QLC260R](#)
[120X10019X](#) [120X10089X](#) [122A10249X](#) [122A10669X](#) [122A11089X](#) [122A13089X](#) [122A10089X](#) [122A10129X](#) [122A10349X](#)
[122A13359X](#) [1377391-4](#) [DIN-048CPC-SR1-MH](#) [1393583-2](#) [1393726-7](#) [140X10129X](#) [143-1913-000](#) [143-1908-000](#) [1484472-1](#) [2110070-1](#)
[2110070-2](#) [CBC20T00-008FDS5-0-1-002VR](#) [172699-5036](#) [2-1393557-4](#) [2-1437084-2](#) [CTJ720E01B-6141](#) [394506](#) [419-2080-402](#)
[V42254B2202C968](#) [419-2086-201](#) [419-2087-002](#) [448657-1](#) [448847-3](#) [5-1393755-9](#) [02990000004](#) [054302](#) [043556](#) [09062483201750](#)
[0850033067](#) [09031646555](#) [09061486901840](#)