



DIN Signal female connector



General information

Design	IEC 60603-2	types: B, C
No. of contacts	64 or 96	
Contact spacing	2,54 mm for 1,27 cable	
Test voltage	1000V	
Contact resistance	max. 20mOhm	
Insulation resistance	min. 106MOhm	
Working current	1 A at 20°C (see derating diagram)	
Temperature range	-65°C ... +85°C	
Termination technology	IDC	
Clearance & creepage distance	min. 1,2 mm each	
Insertion and withdrawal force	64pol. max. 60N 96pol. max. 90N	
Mating cycles	- PL2 acc. to IEC 60603-2 => - PL3 acc. to IEC 60603-2 =>	400 mating cycles 50 mating cycles
RoHS - compliant	Yes	
Leadfree	Yes	
Hot plugging	No	

Insulator material

Material	PBT (thermoplastics, glass fiber reinforcement 30%)
Colour	RAL 7032 (grey)
UL classification	UL 94-V0
Material group acc. to IEC 60664-1	IIIa (175 ≤ CTI < 400)
NFF classification	I3, F4

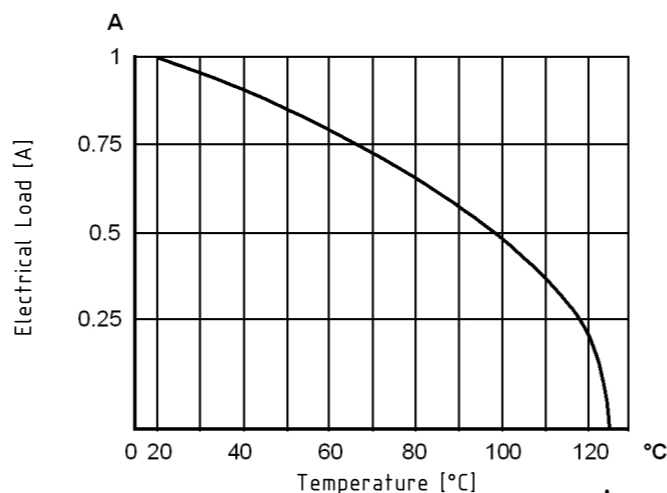
Contact material

Contact material	Copper alloy
Plating termination zone	Au over Ni
Plating contact zone	Au over Ni

Derating diagram acc. to IEC 60512-5 (Current carrying capacity)

The current carrying capacity is limited by maximum temperature of materials for inserts and contacts including terminals.
The current capacity curve is valid for continuous, non interrupted current loaded contacts of connectors when simultaneous power on all contacts is given, without exceeding the maximum temperature.

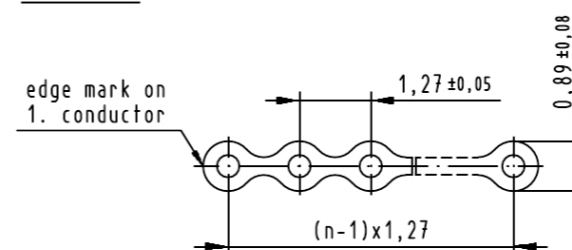
Control and test procedures according to DIN IEC 60512-5



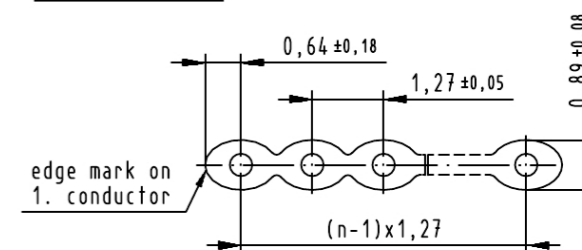
cable information

Wire material	Cu, tinned
Gauge	AWG 28/7 (0,089mm ²)
Insulation material acc. to UL requirements	PVC
termination area spacing	flat cable min. 508mm round flat cable min. 100mm

flat cable



round flat cable



	All rights reserved	Created by 00103855	Inspected by STORCK	Standardisation HOFFMANN	Date 2019-08-15	State Final Release
	Department EL PD	Title DIN Signal female connector		Doc-Key / ECM-Nr. 100580138/UGD/000/C 500000156734		
HARTING Electronics GmbH D-32339 Espelkamp		Type DS	Number 09032000601		Rev. C	Page 1/1

X-ON Electronics

Largest Supplier of Electrical and Electronic Components

Click to view similar products for [DIN 41612 Connectors](#) category:

Click to view products by [HARTING](#) manufacturer:

Other Similar products are found below :

[004.767](#) [608489050008049](#) [691327-1](#) [74670-0732](#) [74680-0340](#) [75880-0015](#) [76453-0014](#) [86093159ALF](#) [9732967801](#) [QLC260R](#)
[120X10019X](#) [120X10089X](#) [122A10249X](#) [122A10669X](#) [122A11089X](#) [122A13089X](#) [122A10089X](#) [122A10129X](#) [122A10349X](#)
[122A13359X](#) [1377391-4](#) [DIN-048CPC-SR1-MH](#) [1393583-2](#) [1393726-7](#) [140X10129X](#) [143-1913-000](#) [143-1908-000](#) [1484472-1](#) [2110070-1](#)
[2110070-2](#) [CBC20T00-008FDS5-0-1-002VR](#) [172699-5036](#) [2-1393557-4](#) [2-1437084-2](#) [CTJ720E01B-6141](#) [394506](#) [419-2080-402](#)
[V42254B2202C968](#) [419-2086-201](#) [419-2087-002](#) [448657-1](#) [448847-3](#) [5-1393755-9](#) [02990000004](#) [054302](#) [043556](#) [09062483201750](#)
[0850033067](#) [09031646555](#) [09061486901840](#)