



# DIN power female connector



## General information

Design	IEC 60603-2	types: MH 24+7, 21+5 female
No. of contacts	Signal: 21 or 24	Power (only for type MH 24+7): 7
Contact spacing	5,08 mm	
Test voltage	Signal: 1550V	Power (only for type MH 24+7): 3100V
Contact resistance	Signal: max. 15mOhm for wirewrap and solder	Power (only for type MH 24+7): max. 8mOhm
Insulation resistance	min. 10 <sup>10</sup> Ohm	
Working current	Signal: 6A at 20°C	Power (only for type MH 24+7): 15A at 20°C
Temperature range	-55°C ... +125°C	
Termination technology	solder pins, wirewrap, crimp	
Clearance	Signal: min. 1,6 mm	Power (only for type MH 24+7): min. 4,5 mm
Creepage	Signal: min. 3,0 mm	Power (only for type MH 24+7): min. 8,0 mm
Insertion and withdrawal force	max. 85N	
Mating cycles	- PL1 acc. to IEC 60603-2 => - PL2 acc. to IEC 60603-2 => - PL3 acc. to IEC 60603-2 =>	500 mating cycles 400 mating cycles 50 mating cycles
UL file	E102079	
RoHS - compliant	Yes	
Leadfree	Yes	
Hot plugging	No	

## Insulator material

Material	PBT (thermoplastics, glass fiber reinforcement 30%)
Colour	RAL 7032 (grey)
UL classification	UL 94-V0
Material group acc. to IEC 60664-1	IIIa (175 ≤ CTI < 400)
NFF classification	I3, F4

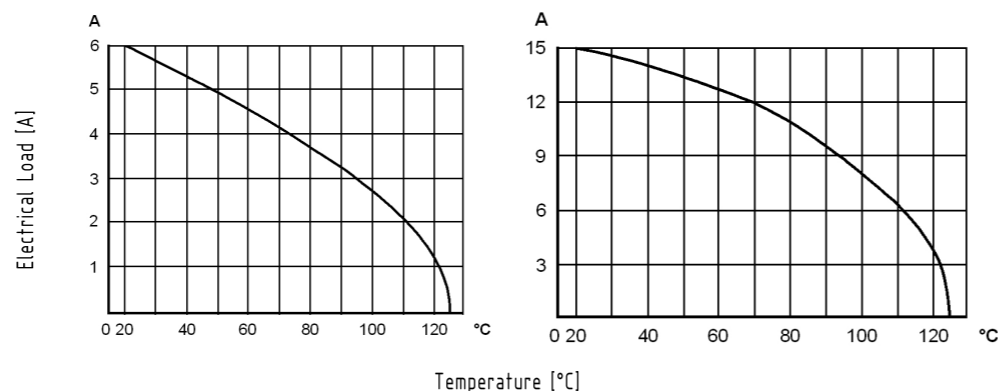
## Contact material

Contact material	Copper alloy
Plating termination zone	Signal: Sn over Ni for solder & wirewrap Power (only for type MH 24+7): Ag
Plating contact zone	Signal: Au over Ni Power (only for type MH 24+7): Ag

## Derating diagram acc. to IEC 60512-5 (Current carrying capacity)

The current carrying capacity is limited by maximum temperature of materials for inserts and contacts including terminals.  
The current capacity curve is valid for continuous, non interrupted current loaded contacts of connectors when simultaneous power on all contacts is given, without exceeding the maximum temperature.

Control and test procedures according to DIN IEC 60512-5



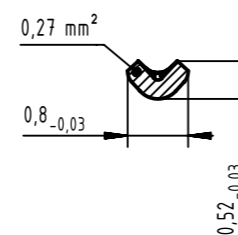
## Soldering instructions

The connectors should be protected when being soldered in a dip, flow or film soldering bath. Otherwise, they might become contaminated as a result of soldering operations or deformed as a result of overheating.

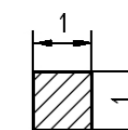
(1) For prototypes and short runs protect the connectors with an industrial adhesive tape, e.g. Tesaband 4331 (www.tesa.de). Cover the underside of the connector moulding and the adjacent parts of the pcb as well as the open sides of the connector. This will prevent heat and gases of the soldering apparatus from damaging the connector. About 140 + 5 mm of the tape should suffice.

(2) For large series a jig is recommended. Its protective cover with a fast action mechanical locking device shields the connectors from gas and heat generated by the soldering apparatus. As an additional protection a foil can be used for covering the parts that should not be soldered.

## Cross section of solder pins



## Cross section of wirewrap posts



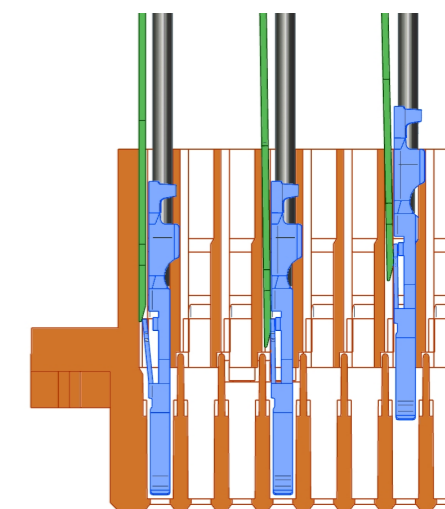
## Installation of crimp contacts

### Fitting the crimp contacts

After crimping the wires onto the contacts with the help of a crimping tool or an automatic crimping machine the contacts should be correctly oriented and inserted into the cavities of the connector moulding in the required configuration. They snap into position and are firmly held in place. A light pull on the wire assures the correct tensile strength of the contact. When using stranded wires with a gauge below 0.37 mm<sup>2</sup> an insertion tool is necessary.

### Removing the crimp contacts

The removal tool is inserted into a slot on the side of the respective crimp cavity. This action compresses the contact retaining spring therefore the contact can then be easily withdrawn using a light pull on the wire. This action will cause no damage to the contact/wire which can be repositioned/refitted as necessary. The drawing demonstrates the crimp removal procedure (max. 5x).



	All rights reserved	Created by	Inspected by	Standardisation	Date	State	
	Department EC PD - DE	STORCK	TADJE	HOFFMANN	2017-03-02	Final Release	
HARTING Electronics GmbH		Title				Doc-Key / ECM-Nr.	
D-32339 Espelkamp		DIN power female connector				100580785/UGD/000/A 500000115668	
		Type	Number	Rev.		Page	
		DS	09062100003	A		1/1	

## X-ON Electronics

Largest Supplier of Electrical and Electronic Components

*Click to view similar products for [DIN 41612 Connectors](#) category:*

*Click to view products by [HARTING](#) manufacturer:*

Other Similar products are found below :

[004.767](#) [608489050008049](#) [691327-1](#) [74670-0732](#) [74680-0340](#) [75880-0015](#) [76453-0014](#) [86093159ALF](#) [9732967801](#) [QLC260R](#)  
[120X10019X](#) [120X10089X](#) [122A10249X](#) [122A10669X](#) [122A11089X](#) [122A13089X](#) [122A10089X](#) [122A10129X](#) [122A10349X](#)  
[122A13359X](#) [1377391-4](#) [DIN-048CPC-SR1-MH](#) [1393583-2](#) [1393726-7](#) [140X10129X](#) [143-1913-000](#) [143-1908-000](#) [1484472-1](#) [2110070-1](#)  
[2110070-2](#) [CBC20T00-008FDS5-0-1-002VR](#) [172699-5036](#) [2-1393557-4](#) [2-1437084-2](#) [CTJ720E01B-6141](#) [394506](#) [419-2080-402](#)  
[V42254B2202C968](#) [419-2086-201](#) [419-2087-002](#) [448657-1](#) [448847-3](#) [5-1393755-9](#) [02990000004](#) [054302](#) [043556](#) [09062483201750](#)  
[0850033067](#) [09031646555](#) [09061486901840](#)