

## Han 1A-2+PE-s-m

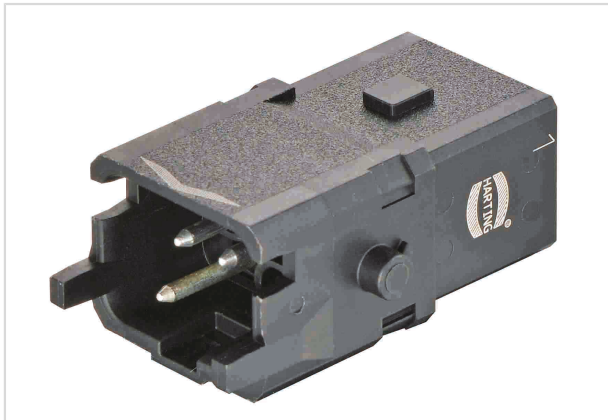


Image is for illustration purposes only. Please refer to product description.

Part number	09 10 002 2606
Specification	Han 1A-2+PE-s-m
HARTING eCatalogue	<a href="https://b2b.harting.com/09100022606">https://b2b.harting.com/09100022606</a>

### Identification

Category	Inserts
Series	Han <sup>®</sup> 1A

### Version

Termination method	Screw termination
Gender	Male
Size	1 A
Number of contacts	2
PE contact	Yes
Locking type	Single locking lever
Details	Please order locking lever separately. Order separately the single wire seal or the hoods/housings for an IP65 performance.

Details

A Han<sup>®</sup> 1A configuration that only consists of inserts (with or without strain relief, 09 10 000 5300) is an unenclosed connector according to IEC 61984. In this case protection against electric shock must be provided by the installation methods of the user.

Contact inserts must not be coupled or decoupled under electrical load.  
Contact inserts must not be powered-up in the un-mated condition.

### Technical characteristics

Conductor cross-section	0.75 ... 1.5 mm <sup>2</sup>
Rated current	10 A
Rated voltage conductor-earth	230 V
Rated voltage conductor-conductor	400 V
Rated impulse voltage	4 kV



Pushing Performance

## Technical characteristics

Pollution degree	3
Rated current acc. to UL	10 A @ AWG 16
Rated voltage acc. to UL	250 V
Insulation resistance	>10 <sup>8</sup> Ω
Tightening torque	0.25 Nm
Limiting temperature	-30 ... +90 °C
Mating cycles	≥100
Degree of protection acc. to IEC 60529	IP20

## Material properties

Material (insert)	Polyamide (PA)
Colour (insert)	RAL 9005 (jet black)
Material (contacts)	Copper alloy
Surface (contacts)	Silver plated
Material flammability class acc. to UL 94	V-0
RoHS	compliant with exemption
RoHS exemptions	6(c): Copper alloy containing up to 4 % lead by weight
ELV status	compliant with exemption
China RoHS	50
REACH Annex XVII substances	No
REACH ANNEX XIV substances	No
REACH SVHC substances	Yes
REACH SVHC substances	Lead
California Proposition 65 substances	Yes
California Proposition 65 substances	Lead

## Specifications and approvals

Specifications	EN 45545-2 R22: HL1, HL2, HL3
	EN 45545-2 R23: HL1, HL2, HL3
	EN 45545-2 R24: HL1, HL2, HL3
	IEC 61373 Category 1 Class B
	EN 60664-1
	IEC 61984
Approvals	DNV GL



Pushing Performance

## Specifications and approvals

UL / CSA	UL 1977 ECBT2.E235076
	CSA-C22.2 No. 182.3 ECBT8.E235076
	Please contact your local HARTING subsidiary for further information.

## Commercial data

Packaging size	1
Net weight	12.3 g
Country of origin	Germany
European customs tariff number	85366990
eCl@ss	27440205 Contact insert for industrial connectors

## X-ON Electronics

Largest Supplier of Electrical and Electronic Components

*Click to view similar products for [Heavy Duty Power Connectors](#) category:*

*Click to view products by [HARTING](#) manufacturer:*

Other Similar products are found below :

[647757-1](#) [6643411-1](#) [6646058-2](#) [6646137-1](#) [6646138-1](#) [6646608-1](#) [6646786-1](#) [6646940-1](#) [6651091-1](#) [6651525-1](#) [6651529-1](#) [6651788-1](#)  
[696475-1](#) [702-32-01109](#) [703-25-02205](#) [73000005059](#) [73000005642](#) [73080254296](#) [73080255059](#) [73080965046](#) [765-15-0080A](#)  
[765-16-0080B](#) [765-18-0080D](#) [902-77-02113](#) [PS00/A0620/6300](#) [1221200000](#) [129-1J](#) [1409400](#) [E6374G1](#) [e6389g2](#) [157-43GW8](#) [MS3117-](#)  
[14AC](#) [1643543-1](#) [1650540-1](#) [1651811-2](#) [1766260-1](#) [1766282-1](#) [1766966-1](#) [1791340000](#) [NLDFT-3-BL-L-S120-M40A](#) [NLDFT-N-W-L-](#)  
[C240-M40B](#) [1926015-1](#) [NLS-N-W-C240-M40B](#) [2-1589900-8](#) [2199314-1](#) [KA8102](#) [9300480317](#) [29131](#) [294-0091-01100](#) [296-0040-01100](#)