

Han 1A-3+PE-c-m

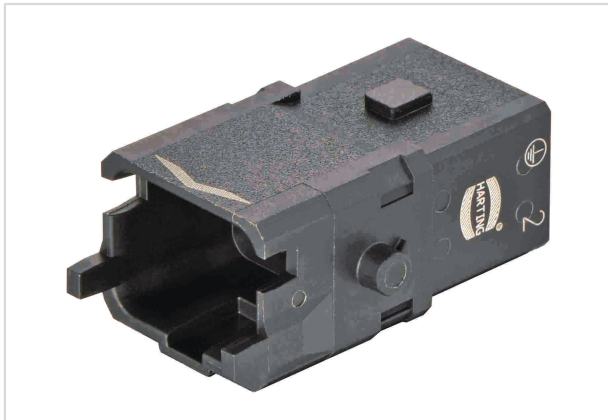


Image is for illustration purposes only. Please refer to product description.

Part number	09 10 003 3206
Specification	Han 1A-3+PE-c-m
HARTING eCatalogue	https://b2b.harting.com/09100033206

Identification

Category	Inserts
Series	Han [®] 1A

Version

Termination method	Crimp termination
Gender	Male
Size	1 A
Number of contacts	3
PE contact	Yes
Locking type	Single locking lever
Details	Please order crimp contacts separately. Please order locking lever separately. Order separately the single wire seal or the hoods/housings for an IP65 performance.

Details	A Han [®] 1A configuration that only consists of inserts (with or without strain relief, 09 10 000 5300) is an unenclosed connector according to IEC 61984. In this case protection against electric shock must be provided by the installation methods of the user. Contact inserts must not be coupled or decoupled under electrical load. Contact inserts must not be powered-up in the un-mated condition.
---------	---

Technical characteristics

Conductor cross-section	0.14 ... 4 mm ²
Rated current	16 A
Rated voltage	400 V
Rated impulse voltage	6 kV



Pushing Performance

Technical characteristics

Pollution degree	3
Rated current acc. to UL	15 A @ AWG 12
Rated voltage acc. to UL	600 V
Insulation resistance	$>10^8 \Omega$
Limiting temperature	-30 ... +90 °C
Mating cycles	≥ 100
Degree of protection acc. to IEC 60529	IP20

Material properties

Material (insert)	Polyamide (PA)
Colour (insert)	RAL 9005 (jet black)
Material flammability class acc. to UL 94	V-0
RoHS	compliant
ELV status	compliant
China RoHS	e
REACH Annex XVII substances	No
REACH ANNEX XIV substances	No
REACH SVHC substances	No

Specifications and approvals

Specifications	EN 45545-2 R22: HL1, HL2, HL3
	EN 45545-2 R23: HL1, HL2, HL3
	EN 45545-2 R24: HL1, HL2, HL3
	IEC 61373 Category 1 Class B
	EN 60664-1
	IEC 61984
Approvals	DNV GL
UL / CSA	UL 1977 ECBT2.E235076
	CSA-C22.2 No. 182.3 ECBT8.E235076
	Please contact your local HARTING subsidiary for further information.

Commercial data

Packaging size	1
Net weight	9.4 g
Country of origin	Germany
European customs tariff number	85366990



Pushing Performance

Commercial data

eCl@ss

27440205 Contact insert for industrial connectors

X-ON Electronics

Largest Supplier of Electrical and Electronic Components

Click to view similar products for [Heavy Duty Power Connectors](#) category:

Click to view products by [HARTING](#) manufacturer:

Other Similar products are found below :

[647757-1](#) [6643411-1](#) [6646058-2](#) [6646137-1](#) [6646138-1](#) [6646608-1](#) [6646786-1](#) [6646940-1](#) [6651091-1](#) [6651525-1](#) [6651529-1](#) [6651788-1](#)
[696475-1](#) [702-32-01109](#) [703-25-02205](#) [73000005059](#) [73000005642](#) [73080254296](#) [73080255059](#) [73080965046](#) [765-15-0080A](#)
[765-16-0080B](#) [765-18-0080D](#) [902-77-02113](#) [PS00/A0620/6300](#) [1221200000](#) [129-1J](#) [1409400](#) [E6374G1](#) [e6389g2](#) [157-43GW8](#) [MS3117-](#)
[14AC](#) [1643543-1](#) [1650540-1](#) [1651811-2](#) [1766260-1](#) [1766282-1](#) [1766966-1](#) [1791340000](#) [NLDFT-3-BL-L-S120-M40A](#) [NLDFT-N-W-L-](#)
[C240-M40B](#) [1926015-1](#) [NLS-N-W-C240-M40B](#) [2-1589900-8](#) [2199314-1](#) [KA8102](#) [9300480317](#) [29131](#) [294-0091-01100](#) [296-0040-01100](#)