

Han-Modular Compact housing

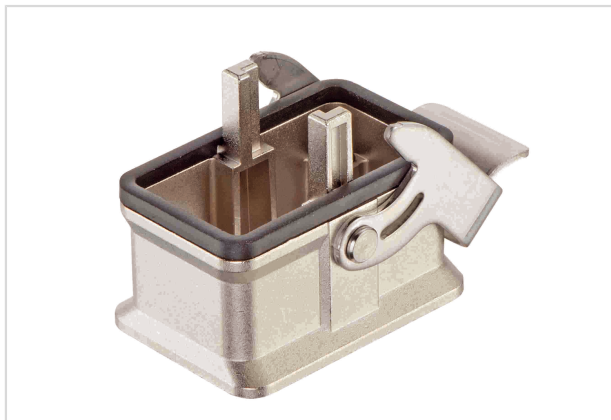


Image is for illustration purposes only. Please refer to product description.

Part number	09 14 001 0301
Specification	Han-Modular Compact housing
HARTING eCatalogue	https://b2b.harting.com/09140010301

Identification

Category	Hoods/Housings
Series of hoods/housings	Han-Modular® Compact
Type of hood/housing	Bulkhead mounted housing

Version

Size	Modular Compact
Locking type	Single locking lever
Details	Rated voltage ≤ 630 V Rated impulse voltage ≤ 6 kV Pollution degree 3
	For a complete connector the specified voltage rating is the maximum level which can be achieved. In cases where the used module(s) do offer lower voltage ratings, then these lower ratings are valid. Higher voltage ratings in individual applications can be approved in coordination with HARTING.

Technical characteristics

Stripping length	10 mm PE contact
Tightening torque	1 Nm PE screw
Limiting temperature	-40 ... +125 °C
Mating cycles	≥ 500
Degree of protection acc. to IEC 60529	IP65 locked condition

Material properties

Material (hood/housing)	Zinc die-cast
Surface (hood/housing)	Nickel plated



Pushing Performance

Material properties

Material (seal)	NBR
Material (locking)	Stainless steel
RoHS	compliant
ELV status	compliant
China RoHS	e
REACH Annex XVII substances	No
REACH ANNEX XIV substances	No
REACH SVHC substances	No
California Proposition 65 substances	Yes
California Proposition 65 substances	Nickel
California Proposition 65 substances	Lead
California Proposition 65 substances	Naphthalene

Specifications and approvals

Specifications	IEC 61984
CE	Yes

Commercial data

Packaging size	1
Net weight	50 g
Country of origin	Germany
European customs tariff number	85389099
eCl@ss	27440202 Shell for industrial connectors

X-ON Electronics

Largest Supplier of Electrical and Electronic Components

Click to view similar products for [Heavy Duty Power Connectors](#) category:

Click to view products by [HARTING](#) manufacturer:

Other Similar products are found below :

[647757-1](#) [6643411-1](#) [6646058-2](#) [6646137-1](#) [6646138-1](#) [6646479-1](#) [6646608-1](#) [6646786-1](#) [6646940-1](#) [6651091-1](#) [6651525-1](#) [6651529-1](#)
[6651788-1](#) [696475-1](#) [73000005059](#) [73000005642](#) [765-15-0080A](#) [765-16-0080B](#) [829992-1](#) [902-77-02113](#) [129-1J](#) [AN0024023](#) [E6374G1](#)
[e6389g2](#) [157-43GW8](#) [MS3117-14AC](#) [1643543-1](#) [1650540-1](#) [1651811-2](#) [1766260-1](#) [1766282-1](#) [1766966-1](#) [1791340000](#) [NLDFT-3-BL-L-](#)
[S120-M40A](#) [NLDFT-N-W-L-C240-M40B](#) [NLS-2-R-C240-M40B](#) [NLS-N-W-C240-M40B](#) [NPS-3-BL-T6](#) [1986615-1](#) [2-1589900-8](#) [2199314-1](#)
[KA8102](#) [9300480317](#) [SBS50BRN#6](#) [29131](#) [29652](#) [1646905-1](#) [1648320-1](#) [1648582-1](#) [1650195-2](#)