

Han® CC Push-In module, female 1,5-6mm²

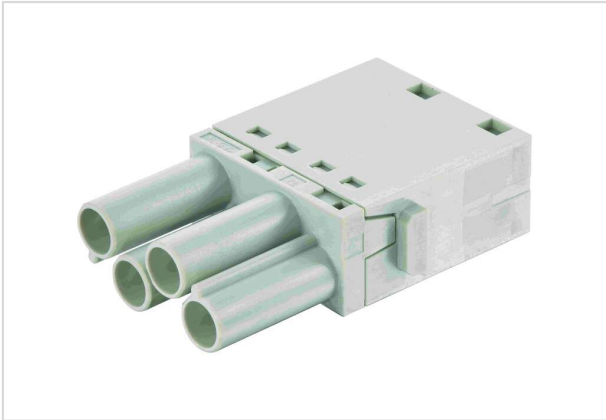


Image is for illustration purposes only. Please refer to product description.

Part number	09 14 004 5101
Specification	Han® CC Push-In module, female 1,5-6mm ²
HARTING eCatalogue	https://b2b.harting.com/09140045101

Identification

Category	Modules
Series	Han-Modular®
Type of module	Han® CC Protected module
Size of the module	Single module

Version

Termination method	Push-In
Gender	Female
Number of contacts	4

Technical characteristics

Conductor cross-section	1.5 ... 6 mm ²
Rated current	40 A
Rated voltage	830 V
Rated impulse voltage	8 kV
Pollution degree	3
Insulation resistance	>10 ¹⁰ Ω
Limiting temperature	-40 ... +125 °C
Mating cycles	≥500

Material properties

Material (insert)	Polycarbonate (PC)
Colour (insert)	RAL 7032 (pebble grey)



Pushing Performance
Since 1945

Material properties

Material flammability class acc. to UL 94	V-0
---	-----

Specifications and approvals

Specifications	IEC 60664-1
	IEC 61984
	IEC 61373 Category 2
	IEC 60352-7

Commercial data

Packaging size	2
Net weight	28.7 g
Country of origin	Germany
European customs tariff number	85389099
ETIM	EC000438
eCl@ss	27440217 Module for industrial connectors (power/signals)

X-ON Electronics

Largest Supplier of Electrical and Electronic Components

Click to view similar products for [Heavy Duty Power Connectors](#) category:

Click to view products by [HARTING](#) manufacturer:

Other Similar products are found below :

[6646058-2](#) [6646137-1](#) [6646138-1](#) [6646940-1](#) [6651091-1](#) [6651525-1](#) [6651529-1](#) [696475-1](#) [702-32-01109](#) [73080255059](#) [73080965046](#)
[7310205040001](#) [765-16-0080B](#) [765-18-0080D](#) [902-77-02113](#) [PS00/A0620/6300](#) [AN0024023](#) [154-42B7WM250](#) [MS3117-14AC](#) [1643543-1](#)
[1766966-1](#) [1791340000](#) [NLDFT-3-BL-L-S120-M40A](#) [NLDFT-N-W-L-C240-M40B](#) [1926015-1](#) [NLS-3-BL-C240-M40B](#) [NLS-N-W-C240-](#)
[M40B](#) [NPS-3-BL-T6](#) [2-1589900-8](#) [9300480317](#) [294-0091-01100](#) [296-0040-01100](#) [1-6609148-0](#) [A32595-0049](#) [1766249-1](#) [19000005132](#)
[1926016-1](#) [1-966831-8](#) [AN0024202](#) [AN0264023](#) [279-0841-10100A](#) [281-0334-00100A](#) [RMSB4](#) [419-2083-301](#) [LCDX4/0-14B-X](#) [075-8519-](#)
[001](#) [078238-1613](#) [07.470.3256.0](#) [09000005288](#) [09140240311](#)