

## Han E Screw module-M

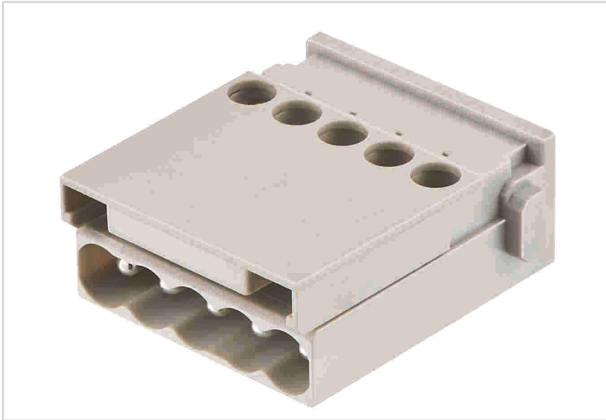


Image is for illustration purposes only. Please refer to product description.

|                    |   |
|--------------------|---|
| Part number        | 09 14 005 2601  |
| Specification      | Han E Screw module-M  |
| HARTING eCatalogue | <a href="https://b2b.harting.com/09140052601">https://b2b.harting.com/09140052601</a> |

### Identification

|                |               |
|----------------|---------------|
| Category       | Modules       |
| Series         | Han-Modular®  |
| Type of module | Han E® module |

### Version

|                    |                   |
|--------------------|-------------------|
| Termination method | Screw termination |
| Gender             | Male              |
| Number of contacts | 5                 |

### Technical characteristics

|                                   |                             |
|-----------------------------------|-----------------------------|
| Conductor cross-section           | 0.5 ... 2.5 mm <sup>2</sup> |
| Rated current                     | 16 A                        |
| Rated voltage conductor-earth     | 230 V                       |
| Rated voltage conductor-conductor | 400 V                       |
| Rated impulse voltage             | 4 kV                        |
| Pollution degree                  | 3                           |
| Insulation resistance             | >10 <sup>10</sup> Ω         |
| Contact resistance                | ≤1 mΩ                       |
| Stripping length                  | 7.5 mm                      |
| Limiting temperature              | -40 ... +125 °C             |
| Mating cycles                     | ≥500                        |



Pushing Performance

## Material properties

|   |  |
|---|--|
| Material (insert)                         | Polycarbonate (PC)                                     |
| Colour (insert)                           | RAL 7032 (pebble grey)                                 |
| Material (contacts)                       | Copper alloy   |
| Surface (contacts)                        | Silver plated  |
| Material flammability class acc. to UL 94 | V-0  |
| RoHS                                      | compliant with exemption                               |
| RoHS exemptions                           | 6(c): Copper alloy containing up to 4 % lead by weight |
| ELV status                                | compliant with exemption                               |
| China RoHS                                | 50   |
| REACH Annex XVII substances               | No   |
| REACH ANNEX XIV substances                | No   |
| REACH SVHC substances                     | Yes  |
| REACH SVHC substances                     | Lead   |
| ECHA SCIP number                          | 5dbb3851-b94e-4e88-97a1-571845975242                   |
| California Proposition 65 substances      | Yes  |
| California Proposition 65 substances      | Nickel<br>Lead   |

## Specifications and approvals

|                |   |
|----------------|---|
| Specifications | EN 60664-1<br>IEC 61984   |
| Approvals      | DNV GL  |
| UL / CSA       | UL 1977 ECBT2.E235076<br>UL 2237 PVVA2.E318390<br>CSA-C22.2 No. 182.3 PVVA8.E318390 |

## Commercial data

|                                |   |
|--------------------------------|---|
| Packaging size                 | 2   |
| Net weight                     | 20.52 g   |
| Country of origin              | Germany   |
| European customs tariff number | 85366990  |
| eCl@ss                         | 27440217 Module for industrial connectors (power/signals) |

## X-ON Electronics

Largest Supplier of Electrical and Electronic Components

*Click to view similar products for [Heavy Duty Power Connectors](#) category:*

*Click to view products by [HARTING](#) manufacturer:*

Other Similar products are found below :

[647757-1](#) [6643411-1](#) [6646058-2](#) [6646137-1](#) [6646138-1](#) [6646479-1](#) [6646608-1](#) [6646786-1](#) [6646940-1](#) [6651091-1](#) [6651525-1](#) [6651529-1](#)  
[6651788-1](#) [696475-1](#) [73000005059](#) [73000005642](#) [765-15-0080A](#) [765-16-0080B](#) [829992-1](#) [902-77-02113](#) [129-1J](#) [AN0024023](#) [E6374G1](#)  
[e6389g2](#) [157-43GW8](#) [MS3117-14AC](#) [1643543-1](#) [1650540-1](#) [1651811-2](#) [1766260-1](#) [1766282-1](#) [1766966-1](#) [1791340000](#) [NLDFT-3-BL-L-](#)  
[S120-M40A](#) [NLDFT-N-W-L-C240-M40B](#) [NLS-2-R-C240-M40B](#) [NLS-N-W-C240-M40B](#) [NPS-3-BL-T6](#) [1986615-1](#) [2-1589900-8](#) [2199314-1](#)  
[KA8102](#) [9300480317](#) [SBS50BRN#6](#) [29131](#) [29652](#) [1646905-1](#) [1648320-1](#) [1648582-1](#) [1650195-2](#)