

## Sliding frame Han 16B, floating side

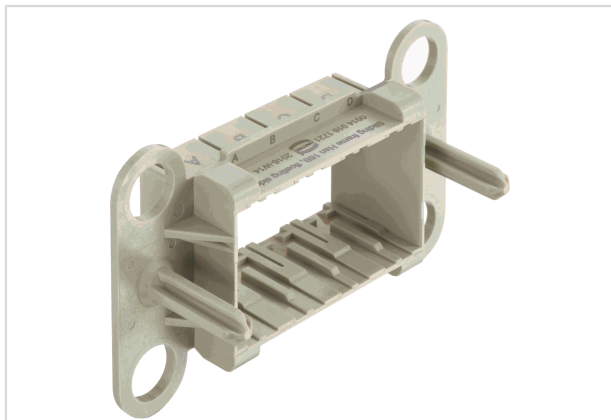


Image is for illustration purposes only. Please refer to product description.

Part number	09 14 016 1721
Specification	Sliding frame Han 16B, floating side
HARTING eCatalogue	<a href="https://b2b.harting.com/09140161721">https://b2b.harting.com/09140161721</a>

### Identification

Category	Accessories
Type of accessory	Sliding frame
Description of the accessory	with test position for 4 modules Float mount A ... D

### Version

Size	16 B
------	------

### Technical characteristics

Limiting temperature	-5 ... +55 °C
Mating cycles	≥500
Floating tolerance	+3 mm
Lock-in range	±4 mm

### Material properties

Material	Polycarbonate (PC)
Material flammability class acc. to UL 94	V-0
RoHS	compliant
ELV status	compliant
China RoHS	e
REACH Annex XVII substances	No
REACH ANNEX XIV substances	No



Pushing Performance

## Material properties

REACH SVHC substances	No
-----------------------	----

## Specifications and approvals

Specifications	EN 60664-1 IEC 61984
----------------	-------------------------

## Commercial data

Packaging size	1
Net weight	31 g
Country of origin	China
European customs tariff number	85389099
eCl@ss	27440210 Fixing element for industrial connectors

## X-ON Electronics

Largest Supplier of Electrical and Electronic Components

*Click to view similar products for [Heavy Duty Power Connectors](#) category:*

*Click to view products by [HARTING](#) manufacturer:*

Other Similar products are found below :

[647757-1](#) [6643411-1](#) [6646058-2](#) [6646137-1](#) [6646138-1](#) [6646479-1](#) [6646608-1](#) [6646786-1](#) [6646940-1](#) [6651091-1](#) [6651525-1](#) [6651529-1](#)  
[6651788-1](#) [696475-1](#) [73000005059](#) [73000005642](#) [765-15-0080A](#) [765-16-0080B](#) [829992-1](#) [902-77-02113](#) [129-1J](#) [AN0024023](#) [E6374G1](#)  
[e6389g2](#) [157-43GW8](#) [MS3117-14AC](#) [1643543-1](#) [1650540-1](#) [1651811-2](#) [1766260-1](#) [1766282-1](#) [1766966-1](#) [1791340000](#) [NLDFT-3-BL-L-](#)  
[S120-M40A](#) [NLDFT-N-W-L-C240-M40B](#) [NLS-2-R-C240-M40B](#) [NLS-N-W-C240-M40B](#) [NPS-3-BL-T6](#) [1986615-1](#) [2-1589900-8](#) [2199314-1](#)  
[KA8102](#) [9300480317](#) [SBS50BRN#6](#) [29131](#) [29652](#) [1646905-1](#) [1648320-1](#) [1648582-1](#) [1650195-2](#)