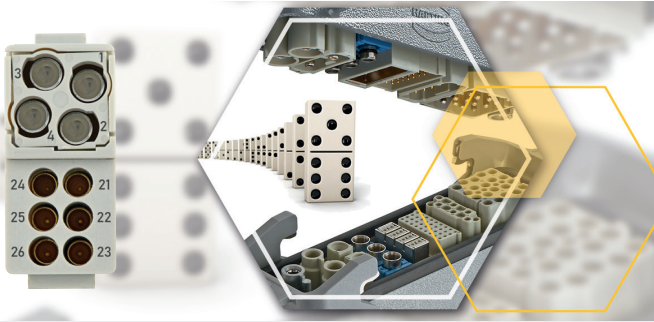


Han-Modular® Domino Module



Pushing Performance
Since 1945

HARTING.com –
the gateway to your
local website.



With the Han-Modular® Domino System, HARTING is launching the next level of modular connectors to the market. It is compatible with the components of the Han-Modular® series, the market standard for modular industrial connectors.

Therefore, the Domino modules can be easily integrated into existing systems; existing frames, hoods and housings or connector modules can be used and complemented.



Your benefits at a glance:

- Smaller and lighter connectors allow space savings of up to 50%
- Maximum flexibility as scalable to the respective need
- Reduction of installation times by combining several individual connections
- Compatible with the components of the Han-Modular® series, the market standard for modular industrial connectors
- Sustainability through consistent modularisation



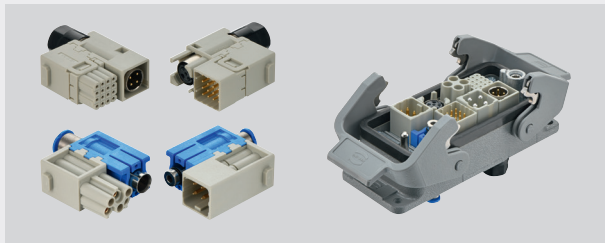
PEOPLE. POWER. PARTNERSHIP.

HARTING Han-Modular® Domino Module

The next level of modular industrial connectors

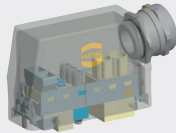
Han-Modular® Domino Module

Just as dominoes have two separate squares, a domino module is made up of two building blocks or cubes. Each domino module consists of a cube with a small tab and a cube with a large tab. The cubes can be flexibly joined to form modules as required. A Han-Modular® Domino module therefore enables the transmission of power, signals, data or compressed air, as male and female contacts can be combined in one domino module.



Configuration of the Han-Modular® connectors

Use the Han® Online Configurator and quickly and easily assemble your Han-Modular® interface and benefit from the advantages.



Ensure the compatibility of the components with each other



Selection always in view through interactive 3D visualization

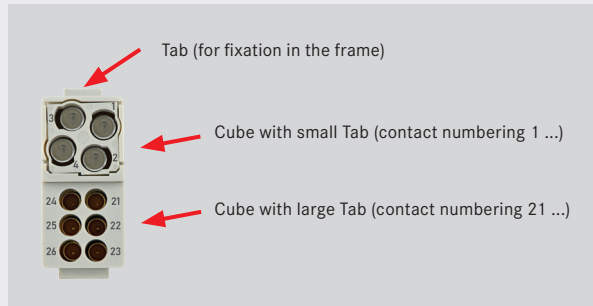


Documentation via download package for the complete interface



Working in a team using the save, load and share function

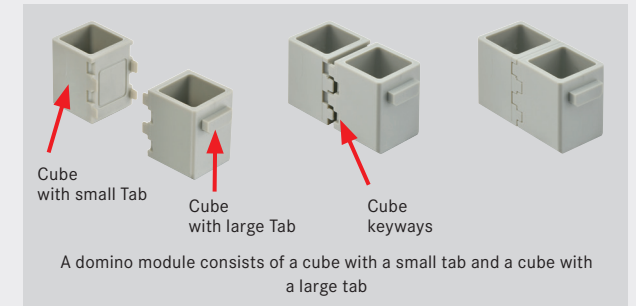
Details and part numbers



	Han® EE Cube	Han DD® Cube
	4 contacts 16 A / 400 V 0.14 ... 4 mm ² Crimp termination, Han® E	6 contacts 10 A / 250 V 0.14 ... 2.5 mm ² Crimp termination, Han® D
small Tab, male	09 14 904 1001	09 14 906 1001
small Tab, female	09 14 904 1101	09 14 906 1101
large Tab, male	09 14 904 2001	09 14 906 2001
large Tab, female	09 14 904 2101	09 14 906 2101

	Han® M12 Cube	Han® M12 GND Cube
for Han® M12 inserts D-coded (cat. 5e) X-coded (cat. 6 _A) up to 10 Gbit/s	for 1 Han® M12 insert	for 1 Han® M12 insert (with additional shielding termination to the hinged frame)
small Tab, male	09 14 921 1001	09 14 921 1002
small Tab, female	09 14 921 1101	09 14 921 1102
large Tab, male	09 14 921 2001	09 14 921 2002
large Tab, female	09 14 921 2101	09 14 921 2102

Details and part numbers



	Han® HD Cube	Pneumatic Cube
	16 contacts 4 A / 32 V 0.09 ... 0.5 mm ² Crimp termination, D-Sub	1 contacts ≤ 10 bar 3 + 4 + 6 mm
small Tab, male	09 14 916 1001	09 14 931 1001
small Tab, female	09 14 916 1101	09 14 931 1001
large Tab, male	09 14 916 2001	09 14 931 2001
large Tab, female	09 14 916 2101	09 14 931 2001

	Dummy Cube	
	Place holder (dummy) for extensions	
small Tab, male	09 14 900 1000	
small Tab, female	09 14 900 1000	
large Tab, male	09 14 900 2000	
large Tab, female	09 14 900 2000	

You can find the Han® configurator at: www.harting.com/configurator

X-ON Electronics

Largest Supplier of Electrical and Electronic Components

Click to view similar products for [Heavy Duty Power Connectors](#) category:

Click to view products by [HARTING](#) manufacturer:

Other Similar products are found below :

[6646058-2](#) [6646137-1](#) [6646138-1](#) [6646940-1](#) [6651091-1](#) [6651525-1](#) [6651529-1](#) [696475-1](#) [702-32-01109](#) [73080255059](#) [73080965046](#)
[7310205040001](#) [765-16-0080B](#) [765-18-0080D](#) [MHDM35-15-K](#) [902-77-02113](#) [PS00/A0620/6300](#) [AN0024023](#) [154-42B7WM250](#) [1643543-1](#)
[1766966-1](#) [1791340000](#) [NLDFT-3-BL-L-S120-M40A](#) [1926015-1](#) [NPS-3-BL-T6](#) [2-1589900-8](#) [9300480317](#) [294-0091-01100](#) [295-0068-](#)
[01100](#) [296-0040-01100](#) [1-6609148-0](#) [A32595-0049](#) [1766249-1](#) [19000005132](#) [1-966831-8](#) [AN0024202](#) [AN0264023](#) [279-0841-10100A](#) [281-](#)
[0334-00100A](#) [RMSB4](#) [419-2083-301](#) [LCDX4/0-14B-X](#) [075-8519-001](#) [078238-1613](#) [07.470.3256.0](#) [09000005288](#) [09140240311](#)
[09300240303](#) [09370009946](#) [09300160318ML](#)