

## M23 12+PE Female-solder(termination)

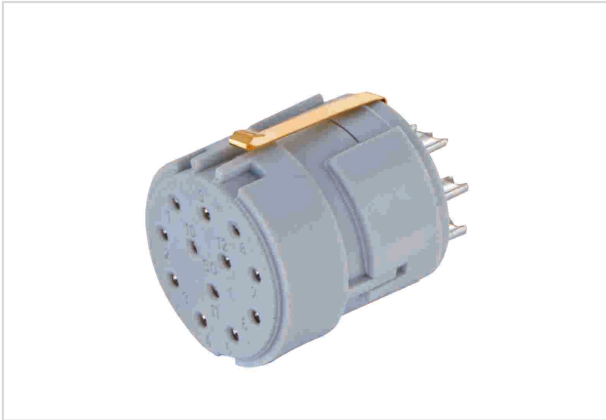


Image is for illustration purposes only. Please refer to product description.

Part number	09 15 112 2722
Specification	M23 12+PE Female-solder(termination)
HARTING eCatalogue	<a href="https://b2b.harting.com/09151122722">https://b2b.harting.com/09151122722</a>

### Identification

Category	Inserts
Series	Circular connectors M23
Identification	Signal
Element	Inserts

### Version

Termination method	Solder termination
Gender	Female
Number of contacts	12
Number of signal contacts	11
further contacts	PE contact

### Technical characteristics

Conductor cross-section	1 mm <sup>2</sup> max.
Rated current	8 A
Rated voltage	200 V
Rated impulse voltage	2.5 kV
Pollution degree	3
Insulation resistance	>10 <sup>10</sup> Ω
Limiting temperature	-40 ... +125 °C
Mating cycles	≥500



Pushing Performance

## Material properties

Material (insert)	Polyamide (PA)
Colour (insert)	Grey
Material (contacts)	Copper alloy
Surface (contacts)	Gold plated
Material flammability class acc. to UL 94	V-0
RoHS	compliant with exemption
RoHS exemptions	6(c): Copper alloy containing up to 4 % lead by weight
ELV status	compliant with exemption
China RoHS	50
REACH Annex XVII substances	No
REACH ANNEX XIV substances	No
REACH SVHC substances	Yes
REACH SVHC substances	Lead
ECHA SCIP number	052d6da0-30ef-44e8-bbe4-e75780521d22
California Proposition 65 substances	Yes
California Proposition 65 substances	Lead

## Specifications and approvals

UL / CSA	UL 1977 ECBT2.E235076
----------	-----------------------

## Commercial data

Packaging size	5
Net weight	9.4 g
Country of origin	Germany
European customs tariff number	85366990
eCl@ss	27440223 Contact insert for circular connectors

## X-ON Electronics

Largest Supplier of Electrical and Electronic Components

*Click to view similar products for [Circular Metric Connectors](#) category:*

*Click to view products by [HARTING](#) manufacturer:*

Other Similar products are found below :

[600X518037X](#) [6STD15PCR99B70A](#) [8R4000A16M020](#) [8R5000A16M005](#) [1200910002](#) [1203580030](#) [1200910008](#) [1200910011](#) [1300140094](#)  
[130203-0054](#) [1300140026](#) [1300150099](#) [1-3637-600-5205](#) [1612618](#) [21036836414](#) [8R4006A16M010](#) [1R3006A20M005](#) [41-40011](#) [42-00006](#)  
[42-01015](#) [4-22279-4](#) [4-22281-1](#) [4-22284-9](#) [43-00113](#) [43-01203](#) [41-40013](#) [42-00008](#) [43-00343](#) [43-01026](#) [43-01162](#) [43-01173](#) [43-10000](#)  
[XS3P-M421-2](#) [600X518050X](#) [8R5006A16M020](#) [8R5006A16M005](#) [8R4000A16M010](#) [6-22279-3](#) [1605332](#) [N03FA03144](#) [1300140077](#) [43-](#)  
[16213](#) [43-01338](#) [XS2RD4265](#) [XS2R-D426-1](#) [XS8A-0441](#) [859RD04-103R004](#) [860RD04-113R004](#) [860RD04-213R004](#) [1-213245-2](#)