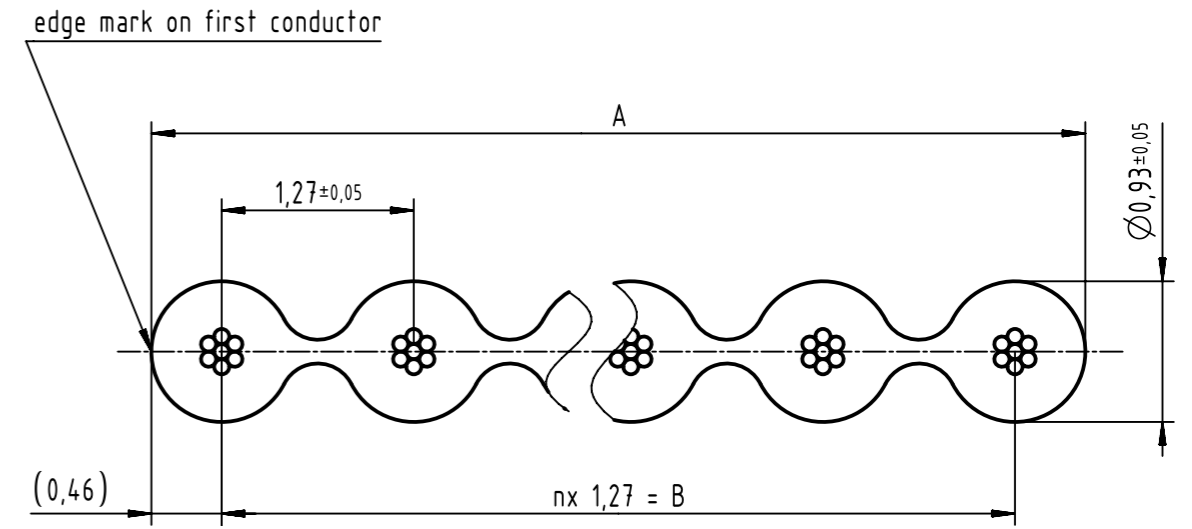


1	2	3	4	5
part number	pole number	length per reel	A	nx 1,27 = B
09 18 006 7001	6	30,48 m (100 feet)	7,28 ±0,15	5x 1,27 = 6,35 ±0,15
09 18 006 7004		100 m (328 feet)		
09 18 009 7001	9	30,48 m (100 feet)	11,09 ±0,20	8x 1,27 = 10,16 ±0,20
09 18 009 7004		100 m (328 feet)		
09 18 010 7001	10	30,48 m (100 feet)	12,36 ±0,20	9x 1,27 = 11,43 ±0,20
09 18 010 7004		100 m (328 feet)		
09 18 014 7001	14	30,48 m (100 feet)	17,44 ±0,20	13x 1,27 = 16,51 ±0,20
09 18 014 7004		100 m (328 feet)		
09 18 015 7001	15	30,48 m (100 feet)	18,71 ±0,20	14x 1,27 = 17,78 ±0,20
09 18 015 7004		100 m (328 feet)		
09 18 016 7001	16	30,48 m (100 feet)	19,98 ±0,20	15x 1,27 = 19,05 ±0,20
09 18 016 7004		100 m (328 feet)		
09 18 018 7001	18	30,48 m (100 feet)	22,52 ±0,20	17x 1,27 = 21,59 ±0,20
09 18 018 7004		100 m (328 feet)		
09 18 020 7001	20	30,48 m (100 feet)	25,06 ±0,20	19x 1,27 = 24,13 ±0,20
09 18 020 7004		100 m (328 feet)		
09 18 024 7001	24	30,48 m (100 feet)	30,14 ±0,25	23x 1,27 = 29,21 ±0,25
09 18 024 7004		100 m (328 feet)		
09 18 025 7001	25	30,48 m (100 feet)	31,41 ±0,25	24x 1,27 = 30,48 ±0,25
09 18 025 7004		100 m (328 feet)		
09 18 026 7001	26	30,48 m (100 feet)	32,68 ±0,25	25x 1,27 = 31,75 ±0,25
09 18 026 7004		100 m (328 feet)		
09 18 028 7001	28	30,48 m (100 feet)	35,22 ±0,30	27x 1,27 = 34,29 ±0,30
09 18 028 7004		100 m (328 feet)		
09 18 030 7001	30	30,48 m (100 feet)	37,76 ±0,30	29x 1,27 = 36,83 ±0,30
09 18 030 7004		100 m (328 feet)		
09 18 034 7001	34	30,48 m (100 feet)	42,84 ±0,30	33x 1,27 = 41,91 ±0,30
09 18 034 7004		100 m (328 feet)		
09 18 037 7001	37	30,48 m (100 feet)	46,65 ±0,30	36x 1,27 = 45,72 ±0,30
09 18 037 7004		100 m (328 feet)		
09 18 040 7001	40	30,48 m (100 feet)	50,46 ±0,30	39x 1,27 = 49,53 ±0,30
09 18 040 7004		100 m (328 feet)		
09 18 050 7001	50	30,48 m (100 feet)	63,16 ±0,40	49x 1,27 = 62,23 ±0,40
09 18 050 7004		100 m (328 feet)		
09 18 060 7001	60	30,48 m (100 feet)	75,86 ±0,50	59x 1,27 = 74,93 ±0,50
09 18 060 7004		100 m (328 feet)		
09 18 064 7001	64	30,48 m (100 feet)	80,94 ±0,50	63x 1,27 = 80,01 ±0,50
09 18 064 7004		100 m (328 feet)		



conductor	material	tinned copper
	gauge	AWG 28/7 (7 x 0.127 mm = 0,09 mm <sup>2</sup> )

insulation	material	PVC
	colour	grey (RAL 7032)
	polarity marker	red

technical data	test voltage	> 2 kV (at 50 Hz eff. for 1 minute)	
	insulation resistance	min. 20 MΩ x km at 20°C	
	conductor resistance	max. 216 Ω/km at 20°C	
	capacitance (GSG)	app. 55 pF/m at 1 kHz	
	impedance (GSG)	app. 100 Ω at 1 MHz	
	current	max. 2,1 A at 25°C	
	operating voltage	max. 300 V	
	temperature rating	static	-30°C to +105°C
		operating	-20°C to +105°C
	flame resistant	acc. to UL VW-1	
approvals	UL AWM style 2651 / CSA		

	All rights reserved	Created by STORCK	Inspected by TADJE	Standardisation KÖHLER	Date 2020-08-17	State Final Release
	Department EL PD	Title SEK flat cable AWG28/7 (grey)				Doc-Key / ECM-Nr. 100790562/UGD/000/A 500000176635
HARTING Electronics GmbH D-32339 Espelkamp		Type TB	Number 09180XX700X		Rev. A	Page 1/1

## X-ON Electronics

Largest Supplier of Electrical and Electronic Components

*Click to view similar products for [Ribbon Cables / IDC Cables](#) category:*

*Click to view products by [HARTING](#) manufacturer:*

Other Similar products are found below :

[FSK-12A](#) [AWG28-10G](#) [EHJ3C](#) [EHJ4C](#) [FSP-25A](#) [cab-LVDV-DAT-34-15](#) [49635-C62-S2](#) [1-3636-600-5204](#) [92315-1408](#) [426171120-3](#) [2-1589735-3](#) [JSM015PP2DCC23N](#) [92301-0283](#) [ACL-eSSI-2](#) [92301-0718](#) [MMSDT-06-20-S-05.5-D-K-LDX](#) [IDD-04-G](#) [NM-2J2-051-PS1-JJAB](#) [1700/26SF \(100FT\)](#) [1700/34SF \(100FT\)](#) [3801/09 \(100FT\)](#) [DS1058-08M28-30.5](#) [DS1058-30M28-30.5](#) [0015712](#) [0015905](#) [S30109](#)  
[11203](#) [11223](#) [11243](#) [11262](#) [0037147](#) [0022512](#) [0022412](#) [0022416](#) [0022421](#) [0022632](#) [0022602](#) [0022502](#) [0022603](#) [0022403](#) [0022604](#)  
[0022404](#) [0022605](#) [0022505](#) [0022405](#) [0022607](#) [0022608](#) [0022408](#) [0011022](#) [0015034](#)