

## SEK-18 SV FE TYPA 20P PL2

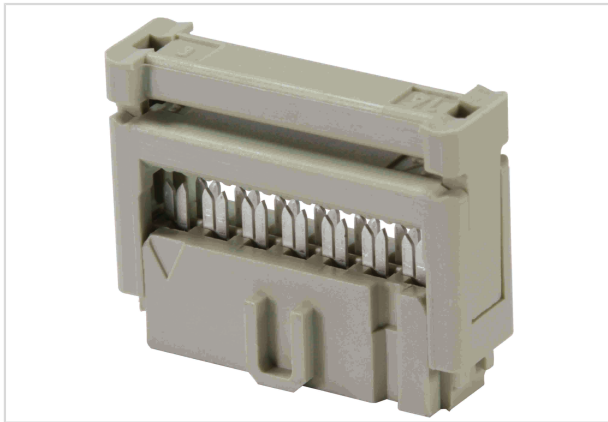


Image is for illustration purposes only. Please refer to product description.

|                    |   |
|--------------------|---|
| Part number        | 09 18 520 6803  |
| Specification      | SEK-18 SV FE TYPA 20P PL2   |
| HARTING eCatalogue | <a href="https://b2b.harting.com/09185206803">https://b2b.harting.com/09185206803</a> |

### Identification

|          |                  |
|----------|------------------|
| Category | Connectors       |
| Series   | SEK              |
| Element  | Female connector |

### Version

|                    |  |
|--------------------|--|
| Connection type    | PCB to cable   |
| Number of contacts | 20   |
| Details            | for IDC flat cable 1.27 mm (0.050") pitch<br>AWG 28/7 - AWG 26/7 |

### Technical characteristics

|                                    |                           |
|------------------------------------|---------------------------|
| Contact rows                       | 2                         |
| Contact spacing (termination side) | 2.54 mm                   |
| Contact spacing (mating side)      | 1.27 mm                   |
| Rated current                      | 2.5 A                     |
| Insulation resistance              | $>10^9 \Omega$            |
| Contact resistance                 | $\leq 20 \text{ m}\Omega$ |
| Limiting temperature               | -55 ... +125 °C           |
| Insertion and withdrawal force     | $\leq 40 \text{ N}$       |
| Performance level                  | 2<br>acc. to IEC 60603-13 |
| Mating cycles                      | $\geq 250$                |
| Test voltage $U_{r.m.s.}$          | 1 kV                      |



Pushing Performance

## Technical characteristics

Isolation group IIIa ( $175 \leq \text{CTI} < 400$ )

## Material properties

|   |   |
|---|---|
| Material (insert)                         | Thermoplastic resin (PBT)                             |
| Colour (insert)                           | Grey  |
| Material (contacts)                       | Copper alloy  |
| Surface (contacts)                        | Au over Ni Mating side<br>Sn over Ni Termination side |
| Material flammability class acc. to UL 94 | V-0   |
| RoHS                                      | compliant   |
| ELV status                                | compliant   |
| China RoHS                                | e   |
| REACH Annex XVII substances               | No  |
| REACH ANNEX XIV substances                | No  |
| REACH SVHC substances                     | No  |
| California Proposition 65 substances      | Yes   |
| California Proposition 65 substances      | Nickel<br>Antimony trioxide                           |

## Specifications and approvals

|                        |  |
|------------------------|--|
| Specifications         | IEC 60603-13   |
| UL / CSA               | UL 1977 ECBT2.E102079<br>CSA-C22.2 No. 182.3 ECBT8.E102079 |
| Railway classification | F3/I3  |

## Commercial data

|                                |   |
|--------------------------------|---|
| Packaging size                 | 100   |
| Net weight                     | 3.2 g   |
| Country of origin              | Romania                                       |
| European customs tariff number | 85366990                                      |
| eCl@ss                         | 27460202 PCB connector (conductor connection) |



Pushing Performance

### Current carrying capacity

The current carrying capacity of the connectors is limited by the thermal load capability of the contact element material including the connections and the insulating parts. The derating curve is therefore valid for currents which flow constantly (non-intermittent) through each contact element of the connector evenly, without exceeding the allowed maximum temperature.

Measuring and testing techniques acc. to IEC 60512-5-2



- ① Temperature raise
- ② Derating curve
- ③ Derating curve 80%

## X-ON Electronics

Largest Supplier of Electrical and Electronic Components

*Click to view similar products for [Headers & Wire Housings](#) category:*

*Click to view products by [HARTING](#) manufacturer:*

Other Similar products are found below :

[892-18-020-10-001101](#) [58102-G61-06LF](#) [582553-1](#) [0009485154](#) [009176003701906](#) [0050291907](#) [LY20-4P-DT1-P1E-BR](#) [02.125.8002.8](#)  
[609-3404](#) [61062-3](#) [622-0430](#) [622-3653LF](#) [63453-116](#) [636-1030](#) [636-1427](#) [636-3427](#) [636-4007](#) [641938-9](#) [641991-4](#) [644827-2](#) [65817-010LF](#)  
[65817-015LF](#) [65863-015LF](#) [66207-023LF](#) [67095-007LF](#) [67601157](#) [68648-049](#) [70.362.1628.0](#) [70-4210](#) [70-4226B](#) [70-4853B](#) [707-5020](#) [707-5028](#) [71.350.2428.0](#) [71918-208LF](#) [71961-016LF](#) [733-134](#) [733-162](#) [754199-000](#) [760-3052](#) [787-8014-00](#) [79531-3000](#) [FCN-360C032-B](#) [FCN-367T-T012/H](#) [FCN-723D010/2](#) [80.063.4001.1](#) [800-90-001-10-001000](#) [800-90-010-10-002000](#) [801-43-002-10-013000](#) [801-43-006-10-002000](#)