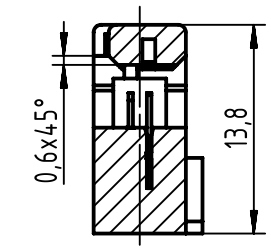


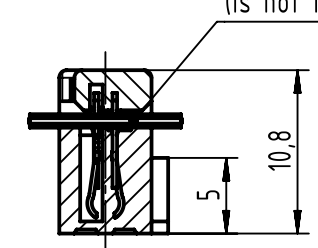
pre-assembled

A-A



assembled

B-B



flat cable  
AWG 26/7 - 28/7  
(is not in scope of delivery)

coding style table


	style A: for connectors 6-pole
	style B: for connectors from 10 to 14-pole
	style C: for connectors from 16 to 64-pole

full range of P/N's and dimensions shown on page 2/2

further information see product data sheet

	All rights reserved Department EL PD	Created by TADJE	Inspected by STORCK	Standardisation HOFFMANN	Date 2020-05-05	State Final Release	Ref. Sub.
HARTING Electronics GmbH D-32339 Espelkamp		Title SEK 18 female connector with open end cover			Doc-Key / ECM-Nr. 100662934/UGD/001/C 500000172195		Rev. C
		Type TB	Number 09185XXX803		Page 1/2		

1	2		3	4	5	6	7	8								
A	performance level										A					
	no. of contacts	PL3		PL2		S4 (NM30)		insulator colour	remark	quantity		dimensions				B
		part number	part number	part number	part number				A max.	B		C	D	C		
B	06	09 18 506 7803	09 18 506 6803	09 18 506 5803	grey	-		12,2	2 x 2,54 (=5,08)	2	7,62	D				
10	09 18 510 7803	09 18 510 6803	09 18 510 5803	grey	-		17,3	4 x 2,54 (=10,16)	3,8	12,7	E					
14	09 18 514 7803	09 18 514 6803	09 18 514 5803	grey	-		22,4	6 x 2,54 (=15,24)	3,8	17,78			F			
16	09 18 516 7803	09 18 516 6803	09 18 516 5803	grey	-		24,9	7 x 2,54 (=17,78)	3,8	20,32		A				
20	09 18 520 7803	09 18 520 6803	09 18 520 5803	grey	-		30	9 x 2,54 (=22,86)	3,8	25,4	B					
26	09 18 526 7803	09 18 526 6803	09 18 526 5803	grey	-		37,6	12 x 2,54 (=30,48)	3,8	33,02			C			
30	09 18 530 7803	09 18 530 6803	09 18 530 5803	grey	-		42,7	14 x 2,54 (=35,56)	3,8	38,50		D				
34	09 18 534 7803	09 18 534 6803	09 18 534 5803	grey	-		47,8	16 x 2,54 (=40,64)	3,8	43,18	E					
40	09 18 540 7803	09 18 540 6803	09 18 540 5803	grey	-		55,4	19 x 2,54 (=48,26)	3,8	50,8			F			
50	09 18 550 7803	09 18 550 6803	09 18 550 5803	black	-		68,1	24 x 2,54 (=60,96)	3,8	63,5		A				
60	09 18 560 7803	09 18 560 6803	09 18 560 5803	black	-		80,8	29 x 2,54 (=73,66)	3,8	76,6	B					
64	09 18 564 7803	09 18 564 6803	09 18 564 5803	black	-		85,9	31 x 2,54 (=78,74)	3,8	81,28			C			
06	09 18 506 7803 001	09 18 506 6803 001	09 18 506 5803 001	black	-		12,2	2 x 2,54 (=5,08)	2	7,62		D				
10	09 18 510 7803 001	09 18 510 6803 001	09 18 510 5803 001	black	-		17,3	4 x 2,54 (=10,16)	3,8	12,7	E					
14	09 18 514 7803 001	09 18 514 6803 001	09 18 514 5803 001	black	-		22,4	6 x 2,54 (=15,24)	3,8	17,78			F			
16	09 18 516 7803 001	09 18 516 6803 001	09 18 516 5803 001	black	-		24,9	7 x 2,54 (=17,78)	3,8	20,32		A				
20	09 18 520 7803 001	09 18 520 6803 001	09 18 520 5803 001	black	-		30	9 x 2,54 (=22,86)	3,8	25,4	B					
26	09 18 526 7803 001	09 18 526 6803 001	09 18 526 5803 001	black	-		37,6	12 x 2,54 (=30,48)	3,8	33,02			C			
30	09 18 530 7803 001	09 18 530 6803 001	09 18 530 5803 001	black	-		42,7	14 x 2,54 (=35,56)	3,8	38,50		D				
34	09 18 534 7803 001	09 18 534 6803 001	09 18 534 5803 001	black	-		47,8	16 x 2,54 (=40,64)	3,8	43,18	E					
40	09 18 540 7803 001	09 18 540 6803 001	09 18 540 5803 001	black	-		55,4	19 x 2,54 (=48,26)	3,8	50,8			F			
50	09 18 550 7803 001	09 18 550 6803 001	09 18 550 5803 001	black	-		68,1	24 x 2,54 (=60,96)	3,8	63,5		A				
60	09 18 560 7803 001	09 18 560 6803 001	09 18 560 5803 001	black	-		80,8	29 x 2,54 (=73,66)	3,8	76,6	B					
64	09 18 564 7803 001	09 18 564 6803 001	09 18 564 5803 001	black	-		85,9	31 x 2,54 (=78,74)	3,8	81,28			C			
06	09 18 506 7803 58U	09 18 506 6803 58U	09 18 506 5803 58U	grey	bulk packaging	5000 pieces	12,2	2 x 2,54 (=5,08)	2	7,62		D				
10	09 18 510 7803 58U	09 18 510 6803 58U	09 18 510 5803 58U	grey	bulk packaging	5000 pieces	17,3	4 x 2,54 (=10,16)	3,8	12,7	E					
14	09 18 514 7803 58U	09 18 514 6803 58U	09 18 514 5803 58U	grey	bulk packaging	5000 pieces	22,4	6 x 2,54 (=15,24)	3,8	17,78			F			
16	09 18 516 7803 58U	09 18 516 6803 58U	09 18 516 5803 58U	grey	bulk packaging	5000 pieces	24,9	7 x 2,54 (=17,78)	3,8	20,32		A				
20	09 18 520 7803 58U	09 18 520 6803 58U	09 18 520 5803 58U	grey	bulk packaging	5000 pieces	30	9 x 2,54 (=22,86)	3,8	25,4	B					
26	09 18 526 7803 58U	09 18 526 6803 58U	09 18 526 5803 58U	grey	bulk packaging	5000 pieces	37,6	12 x 2,54 (=30,48)	3,8	33,02			C			
30	09 18 530 7803 58U	09 18 530 6803 58U	09 18 530 5803 58U	grey	bulk packaging	5000 pieces	42,7	14 x 2,54 (=35,56)	3,8	38,50		D				
34	09 18 534 7803 58U	09 18 534 6803 58U	09 18 534 5803 58U	grey	bulk packaging	3000 pieces	47,8	16 x 2,54 (=40,64)	3,8	43,18	E					
40	09 18 540 7803 58U	09 18 540 6803 58U	09 18 540 5803 58U	grey	bulk packaging	3000 pieces	55,4	19 x 2,54 (=48,26)	3,8	50,8			F			

 All Dimensions in mm Original Size DIN A3		Scale 1:1		Free size tol.		Ref. Sub.	
All rights reserved Department EL PD		Created by TADJE		Inspected by STORCK		Standardisation HOFFMANN	
HARTING Electronics GmbH D-32339 Espelkamp		Title SEK 18 female connector with open end cover		Date 2020-05-05		State Final Release	
		Type TB		Number 09185XXX803		Doc-Key / ECM-Nr. 100662934/UGD/001/C 500000172195	
						Rev. C Page 2/2	

## X-ON Electronics

Largest Supplier of Electrical and Electronic Components

*Click to view similar products for [Headers & Wire Housings](#) category:*

*Click to view products by [HARTING](#) manufacturer:*

Other Similar products are found below :

[892-18-020-10-001101](#) [58102-G61-06LF](#) [582553-1](#) [0009485154](#) [009176003701906](#) [0050291907](#) [LY20-4P-DT1-P1E-BR](#) [02.125.8002.8](#)  
[609-3404](#) [61062-3](#) [622-0430](#) [622-3653LF](#) [63453-116](#) [636-1030](#) [636-1427](#) [636-3427](#) [636-4007](#) [641938-9](#) [641991-4](#) [644827-2](#) [65817-010LF](#)  
[65817-015LF](#) [65863-015LF](#) [66207-023LF](#) [67095-007LF](#) [67601157](#) [68648-049](#) [70.362.1628.0](#) [70-4210](#) [70-4226B](#) [70-4853B](#) [707-5020](#) [707-](#)  
[5028](#) [71.350.2428.0](#) [71918-208LF](#) [71961-016LF](#) [733-134](#) [733-162](#) [754199-000](#) [760-3052](#) [787-8014-00](#) [79531-3000](#) [FCN-360C032-B](#) [FCN-](#)  
[367T-T012/H](#) [FCN-723D010/2](#) [80.063.4001.1](#) [800-90-001-10-001000](#) [800-90-010-10-002000](#) [801-43-002-10-013000](#) [801-43-006-10-002000](#)