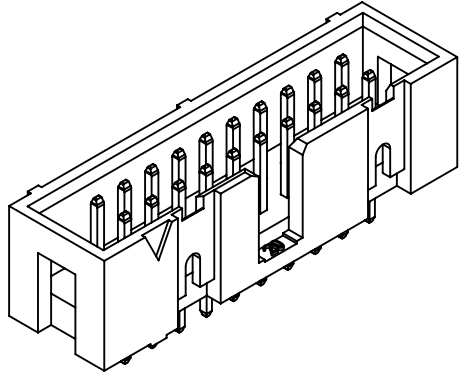
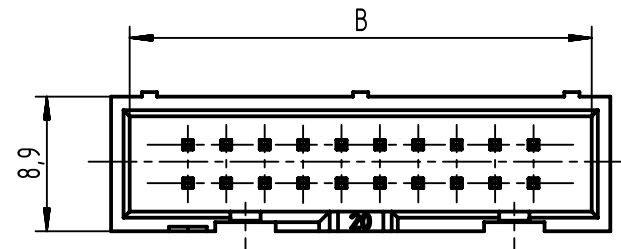
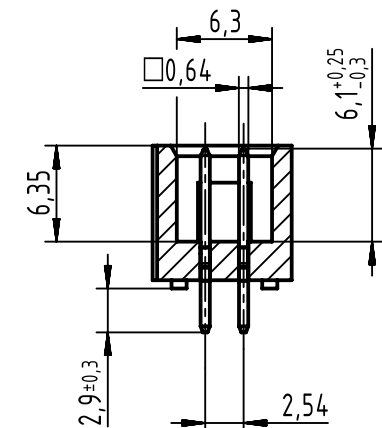




A-A




further more information
see DS 09181100001

full range of P/N's and
dimensions shown on page 2/2

coding style table	
	style A: for connectors 6-pole
	style B: for connectors from 10 to 14-pole
	style C: for connectors from 16 to 64-pole

		All Dimensions in mm Original Size DIN A3		Scale 2:1		Free size tol. IEC 60603-13		Ref. Sub. TB 09185XXX324 / 500000068837 / 2014-05-16						
		All rights reserved		Created by STORCK		Inspected by LEHNERT		Standardisation HOFFMANN		Date 2015-12-07		State Final Release		
		Department EC PD - DE												
HARTING Electronics GmbH D-32339 Espelkamp		Title SEK 18 male low profile straight solder 2.9										Doc-Key / ECM-Nr. 100154466/UGD/008/A 500000094890		
		Type TB		Number 09185XXX324								Rev. A		Page 1/2

1	2	3	4	5	6	7	8

	All rights reserved		Scale 1:1	Free size tol.		Ref.	
	Department EC PD - DE		Created by STORCK	Inspected by LEHNERT	Standardisation HOFFMANN	Date 2015-12-07	Sub. TB 09185XXX324 / 500000068837 / 2014-05-16
HARTING Electronics GmbH D-32339 Espelkamp		Title SEK 18 male low profile straight solder 2.9				Doc-Key / ECM-Nr. 100154466/UGD/008/A 500000094890	
		Type TB	Number 09185XXX324			Rev. A	Page 2/2

X-ON Electronics

Largest Supplier of Electrical and Electronic Components

Click to view similar products for [Headers & Wire Housings](#) category:

Click to view products by [HARTING](#) manufacturer:

Other Similar products are found below :

[95000-104TRLF](#) [10135584-644402LF](#) [DF62W-EP2022PCA](#) [95000-106TRLF](#) [DF62W-2022SCA](#) [DF62W-EP2022PC](#) [2203348](#) [DF62W-2022SC](#) [1084018](#) [1029039](#) [1084017](#) [802-10-012-10-002000](#) [1112640](#) [1112639](#) [891-007-9SS-BST1T](#) [000-34000](#) [0008550134](#) [0009482033](#) [0009507031](#) [57102-F02-18ULF](#) [57102-S06-03LF](#) [57202-S52-04LF](#) [PCN6-15S-2.5E](#) [0039019024](#) [58102-G61-06LF](#) [582553-1](#) [0009485154](#) [0009508121](#) [0022285053](#) [0050291907](#) [018731A](#) [LY20-4P-DT1-P1E-BR](#) [02.125.8002.8](#) [60101931](#) [60598-1 \(Cut Strip\)](#) [M1625-3R/100](#) [61062-3](#) [61082-181009](#) [CSU011177004](#) [636-1427](#) [638009-1](#) [641938-9](#) [641991-4](#) [644168-1](#) [644827-2](#) [647662-1](#) [65039-019ELF](#) [65692-001LF](#) [65781-018](#) [65781-047](#)