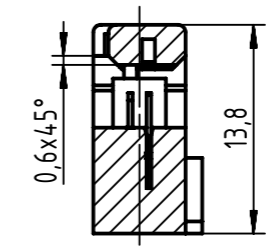


see table for coding, feature arrangement and style

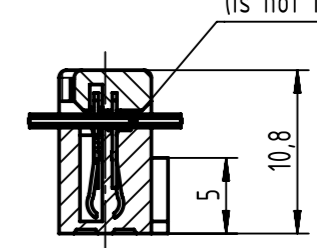
pre-assembled

A-A



assembled

B-B



flat cable
AWG 26/7 - 28/7
(is not in scope of delivery)

coding style table

	style A: for connectors 6-pole
	style B: for connectors from 10 to 14-pole
	style C: for connectors from 16 to 64-pole

further information see: DS 09182100600

	All rights reserved Department EC PD - DE	Created by STORCK	Inspected by LEHNERT	Standardisation HOFFMANN	Date 2016-04-05	State Final Release	Ref. Sub.
	HARTING Electronics GmbH D-32339 Espelkamp	Title SEK 18 female connector with open end cover				Doc-Key / ECM-Nr. 100662934/UGD/001/A 50000099698	
		Type TB	Number 09185XXX803		Rev. A	Page 1/2	

1	2		3	4	5	6	7	8					
A	performance level												
	PL3			PL2			S4			dimensions			
	no. of contacts	part number	part number	part number	insulator colour	remark	quantity	A max.	B	C	D		
B	06	09 18 506 7803	09 18 506 6803	09 18 506 5803	grey	-		12,2	2 x 2,54 (=5,08)	2	8,02		
	10	09 18 510 7803	09 18 510 6803	09 18 510 5803				17,3	4 x 2,54 (=10,16)	3,8	13,1		
	14	09 18 514 7803	09 18 514 6803	09 18 514 5803				22,4	6 x 2,54 (=15,24)	3,8	18,18		
	16	09 18 516 7803	09 18 516 6803	09 18 516 5803				24,9	7 x 2,54 (=17,78)	3,8	20,72		
	20	09 18 520 7803	09 18 520 6803	09 18 520 5803				30	9 x 2,54 (=22,86)	3,8	25,8		
	26	09 18 526 7803	09 18 526 6803	09 18 526 5803				37,6	12 x 2,54 (=30,48)	3,8	33,42		
	30	09 18 530 7803	09 18 530 6803	09 18 530 5803				42,7	14 x 2,54 (=35,56)	3,8	38,56		
	34	09 18 534 7803	09 18 534 6803	09 18 534 5803				47,8	16 x 2,54 (=40,64)	3,8	43,58		
	40	09 18 540 7803	09 18 540 6803	09 18 540 5803				55,4	19 x 2,54 (=48,26)	3,8	51,2		
	50	09 18 550 7803	09 18 550 6803	09 18 550 5803				68,1	24 x 2,54 (=60,96)	3,8	63,9		
	60	09 18 560 7803	09 18 560 6803	09 18 560 5803				80,8	29 x 2,54 (=73,66)	3,8	76,6		
	64	09 18 564 7803	09 18 564 6803	09 18 564 5803				85,9	31 x 2,54 (=78,74)	3,8	81,68		
C	06	09 18 506 7803 001	09 18 506 6803 001	09 18 506 5803 001	black	-		12,2	2 x 2,54 (=5,08)	2	8,02		
	10	09 18 510 7803 001	09 18 510 6803 001	09 18 510 5803 001				17,3	4 x 2,54 (=10,16)	3,8	13,1		
	14	09 18 514 7803 001	09 18 514 6803 001	09 18 514 5803 001				22,4	6 x 2,54 (=15,24)	3,8	18,18		
	16	09 18 516 7803 001	09 18 516 6803 001	09 18 516 5803 001				24,9	7 x 2,54 (=17,78)	3,8	20,72		
	20	09 18 520 7803 001	09 18 520 6803 001	09 18 520 5803 001				30	9 x 2,54 (=22,86)	3,8	25,8		
	26	09 18 526 7803 001	09 18 526 6803 001	09 18 526 5803 001				37,6	12 x 2,54 (=30,48)	3,8	33,42		
	30	09 18 530 7803 001	09 18 530 6803 001	09 18 530 5803 001				42,7	14 x 2,54 (=35,56)	3,8	38,56		
	34	09 18 534 7803 001	09 18 534 6803 001	09 18 534 5803 001				47,8	16 x 2,54 (=40,64)	3,8	43,58		
	40	09 18 540 7803 001	09 18 540 6803 001	09 18 540 5803 001				55,4	19 x 2,54 (=48,26)	3,8	51,2		
	50	09 18 550 7803 001	09 18 550 6803 001	09 18 550 5803 001				68,1	24 x 2,54 (=60,96)	3,8	63,9		
	60	09 18 560 7803 001	09 18 560 6803 001	09 18 560 5803 001				80,8	29 x 2,54 (=73,66)	3,8	76,6		
	64	09 18 564 7803 001	09 18 564 6803 001	09 18 564 5803 001				85,9	31 x 2,54 (=78,74)	3,8	81,68		
D	06	09 18 506 7803 58U	09 18 506 6803 58U	09 18 506 5803 58U	grey	bulk packaging	5000 pieces	12,2	2 x 2,54 (=5,08)	2	8,02		
	10	09 18 510 7803 58U	09 18 510 6803 58U	09 18 510 5803 58U			5000 pieces	17,3	4 x 2,54 (=10,16)	3,8	13,1		
	14	09 18 514 7803 58U	09 18 514 6803 58U	09 18 514 5803 58U			5000 pieces	22,4	6 x 2,54 (=15,24)	3,8	18,18		
	16	09 18 516 7803 58U	09 18 516 6803 58U	09 18 516 5803 58U			5000 pieces	24,9	7 x 2,54 (=17,78)	3,8	20,72		
	20	09 18 520 7803 58U	09 18 520 6803 58U	09 18 520 5803 58U			5000 pieces	30	9 x 2,54 (=22,86)	3,8	25,8		
	26	09 18 526 7803 58U	09 18 526 6803 58U	09 18 526 5803 58U			5000 pieces	37,6	12 x 2,54 (=30,48)	3,8	33,42		
	30	09 18 530 7803 58U	09 18 530 6803 58U	09 18 530 5803 58U			5000 pieces	42,7	14 x 2,54 (=35,56)	3,8	38,56		
	34	09 18 534 7803 58U	09 18 534 6803 58U	09 18 534 5803 58U			3000 pieces	47,8	16 x 2,54 (=40,64)	3,8	43,58		
	40	09 18 540 7803 58U	09 18 540 6803 58U	09 18 540 5803 58U			3000 pieces	55,4	19 x 2,54 (=48,26)	3,8	51,2		
	E	06	09 18 506 7803 58U	09 18 506 6803 58U			09 18 506 5803 58U	grey	bulk packaging	5000 pieces	12,2	2 x 2,54 (=5,08)	2
10		09 18 510 7803 58U	09 18 510 6803 58U	09 18 510 5803 58U	5000 pieces	17,3	4 x 2,54 (=10,16)			3,8	13,1		
14		09 18 514 7803 58U	09 18 514 6803 58U	09 18 514 5803 58U	5000 pieces	22,4	6 x 2,54 (=15,24)			3,8	18,18		
16		09 18 516 7803 58U	09 18 516 6803 58U	09 18 516 5803 58U	5000 pieces	24,9	7 x 2,54 (=17,78)			3,8	20,72		
20		09 18 520 7803 58U	09 18 520 6803 58U	09 18 520 5803 58U	5000 pieces	30	9 x 2,54 (=22,86)			3,8	25,8		
26		09 18 526 7803 58U	09 18 526 6803 58U	09 18 526 5803 58U	5000 pieces	37,6	12 x 2,54 (=30,48)			3,8	33,42		
30		09 18 530 7803 58U	09 18 530 6803 58U	09 18 530 5803 58U	5000 pieces	42,7	14 x 2,54 (=35,56)			3,8	38,56		
34		09 18 534 7803 58U	09 18 534 6803 58U	09 18 534 5803 58U	3000 pieces	47,8	16 x 2,54 (=40,64)			3,8	43,58		
40		09 18 540 7803 58U	09 18 540 6803 58U	09 18 540 5803 58U	3000 pieces	55,4	19 x 2,54 (=48,26)			3,8	51,2		
F		performance level											
	PL3			PL2			S4			dimensions			
	no. of contacts	part number	part number	part number	insulator colour	remark	quantity	A max.	B	C	D		
	06	09 18 506 7803	09 18 506 6803	09 18 506 5803	grey	-		12,2	2 x 2,54 (=5,08)	2	8,02		
	10	09 18 510 7803	09 18 510 6803	09 18 510 5803				17,3	4 x 2,54 (=10,16)	3,8	13,1		
	14	09 18 514 7803	09 18 514 6803	09 18 514 5803				22,4	6 x 2,54 (=15,24)	3,8	18,18		
	16	09 18 516 7803	09 18 516 6803	09 18 516 5803				24,9	7 x 2,54 (=17,78)	3,8	20,72		
	20	09 18 520 7803	09 18 520 6803	09 18 520 5803				30	9 x 2,54 (=22,86)	3,8	25,8		
	26	09 18 526 7803	09 18 526 6803	09 18 526 5803				37,6	12 x 2,54 (=30,48)	3,8	33,42		
	30	09 18 530 7803	09 18 530 6803	09 18 530 5803				42,7	14 x 2,54 (=35,56)	3,8	38,56		
34	09 18 534 7803	09 18 534 6803	09 18 534 5803	47,8				16 x 2,54 (=40,64)	3,8	43,58			
40	09 18 540 7803	09 18 540 6803	09 18 540 5803	55,4				19 x 2,54 (=48,26)	3,8	51,2			
50	09 18 550 7803	09 18 550 6803	09 18 550 5803	68,1				24 x 2,54 (=60,96)	3,8	63,9			
60	09 18 560 7803	09 18 560 6803	09 18 560 5803	80,8	29 x 2,54 (=73,66)	3,8	76,6						
64	09 18 564 7803	09 18 564 6803	09 18 564 5803	85,9	31 x 2,54 (=78,74)	3,8	81,68						

	All Dimensions in mm Original Size DIN A3	Scale 1:1	Free size tol.	Ref.
	All rights reserved Department EC PD - DE	Created by STORCK	Inspected by LEHNERT	Standardisation HOFFMANN
HARTING Electronics GmbH D-32339 Espelkamp		Title SEK 18 female connector with open end cover		Date 2016-04-05
		Type TB	Number 09185XXX803	State Final Release
				Doc-Key / ECM-Nr. 100662934/UGD/001/A 50000099698
				Rev. A Page 2/2

X-ON Electronics

Largest Supplier of Electrical and Electronic Components

Click to view similar products for [Headers & Wire Housings](#) category:

Click to view products by [HARTING](#) manufacturer:

Other Similar products are found below :

[95000-104TRLF](#) [10135584-644402LF](#) [DF62W-EP2022PCA](#) [95000-106TRLF](#) [DF62W-2022SCA](#) [DF62W-EP2022PC](#) [2203348](#) [DF62W-2022SC](#) [1084018](#) [1029039](#) [1084017](#) [802-10-012-10-002000](#) [1112640](#) [1112639](#) [891-007-9SS-BST1T](#) [000-34000](#) [0008550134](#) [0009482033](#) [0009507031](#) [57102-F02-18ULF](#) [57102-S06-03LF](#) [57202-S52-04LF](#) [PCN6-15S-2.5E](#) [0039019024](#) [58102-G61-06LF](#) [582553-1](#) [0009485154](#) [0009508121](#) [0022285053](#) [0050291907](#) [018731A](#) [LY20-4P-DT1-P1E-BR](#) [02.125.8002.8](#) [60101931](#) [60598-1 \(Cut Strip\)](#) [M1625-3R/100](#) [61062-3](#) [61082-181009](#) [CSU011177004](#) [636-1427](#) [638009-1](#) [641938-9](#) [641991-4](#) [644168-1](#) [644827-2](#) [647662-1](#) [65039-019ELF](#) [65692-001LF](#) [65781-018](#) [65781-047](#)