

## Han B Base Surface HC 2 Levers 1 Entry P

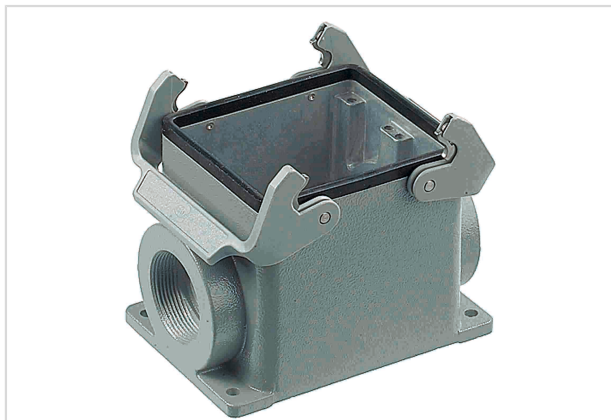


Image is for illustration purposes only. Please refer to product description.

|                    |   |
|--------------------|---|
| Part number        | 09 30 032 0232  |
| Specification      | Han B Base Surface HC 2 Levers 1 Entry P  |
| HARTING eCatalogue | <a href="https://b2b.harting.com/09300320232">https://b2b.harting.com/09300320232</a> |

### Identification

|                          |                         |
|--------------------------|-------------------------|
| Category                 | Hoods/Housings          |
| Series of hoods/housings | Han <sup>®</sup> B      |
| Type of hood/housing     | Surface mounted housing |
| Type                     | High construction       |

### Version

|                            |   |
|----------------------------|---|
| Size                       | 32 B  |
| Version                    | Side entry  |
| Cable entry                | 1x Pg 36  |
| Locking type               | Double locking lever                              |
| Han-Easy Lock <sup>®</sup> | Yes   |
| Field of application       | Standard hoods/housings for industrial connectors |

### Technical characteristics

|  |                 |
|--|-----------------|
| Limiting temperature                   | -40 ... +125 °C |
| Degree of protection acc. to IEC 60529 | IP65            |
| Type rating acc. to UL 50 / UL 50E     | 4<br>4X<br>12   |

### Material properties

|                         |                      |
|-------------------------|----------------------|
| Material (hood/housing) | Aluminium die-cast   |
| Surface (hood/housing)  | Powder-coated        |
| Colour (hood/housing)   | RAL 7037 (dust grey) |



Pushing Performance

## Material properties

|  |   |
|--|---|
| Material (seal)  | NBR   |
| Material (locking)   | Polycarbonate (PC)<br>Stainless steel                     |
| Colour (locking)   | RAL 7037 (dust grey)                                      |
| Material flammability class acc. to UL 94 (locking levers) | V-0   |
| RoHS   | compliant   |
| ELV status   | compliant   |
| China RoHS   | e   |
| REACH Annex XVII substances                                | No  |
| REACH ANNEX XIV substances                                 | No  |
| REACH SVHC substances                                      | Yes   |
| REACH SVHC substances                                      | Potassium 1,1,2,2,3,3,4,4,4-nonafluorobutane-1-sulphonate |
| California Proposition 65 substances                       | Yes   |
| California Proposition 65 substances                       | Nickel<br>Naphthalene                                     |

## Specifications and approvals

|           |  |
|-----------|--|
| Approvals | DNV GL   |
| UL / CSA  | UL 1977 ECBT2.E235076<br>CSA-C22.2 No. 182.3 ECBT8.E235076 |
| CE        | Yes  |

## Commercial data

|                                |  |
|--------------------------------|--|
| Packaging size                 | 1  |
| Net weight                     | 722.14 g                                 |
| Country of origin              | Germany                                  |
| European customs tariff number | 85389099                                 |
| eCl@ss                         | 27440202 Shell for industrial connectors |

## X-ON Electronics

Largest Supplier of Electrical and Electronic Components

*Click to view similar products for [Heavy Duty Power Connectors](#) category:*

*Click to view products by [HARTING](#) manufacturer:*

Other Similar products are found below :

[647757-1](#) [6643411-1](#) [6646058-2](#) [6646137-1](#) [6646138-1](#) [6646479-1](#) [6646608-1](#) [6646786-1](#) [6646940-1](#) [6651091-1](#) [6651525-1](#) [6651529-1](#)  
[6651788-1](#) [696475-1](#) [73000005059](#) [73000005642](#) [765-15-0080A](#) [765-16-0080B](#) [829992-1](#) [902-77-02113](#) [129-1J](#) [AN0024023](#) [E6374G1](#)  
[e6389g2](#) [157-43GW8](#) [MS3117-14AC](#) [1643543-1](#) [1650540-1](#) [1651811-2](#) [1766260-1](#) [1766282-1](#) [1766966-1](#) [1791340000](#) [NLDFT-3-BL-L-](#)  
[S120-M40A](#) [NLDFT-N-W-L-C240-M40B](#) [NLS-2-R-C240-M40B](#) [NLS-N-W-C240-M40B](#) [NPS-3-BL-T6](#) [1986615-1](#) [2-1589900-8](#) [2199314-1](#)  
[KA8102](#) [9300480317](#) [SBS50BRN#6](#) [29131](#) [29652](#) [1646905-1](#) [1648320-1](#) [1648582-1](#) [1650195-2](#)