

## Han HsB-SMC-FC-CRT-1.5 mm<sup>2</sup> / 16 AWG-Ag

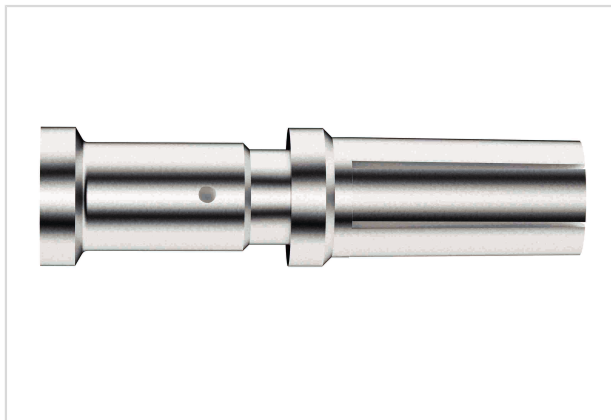


Image is for illustration purposes only. Please refer to product description.

|                    |   |
|--------------------|---|
| Part number        | 09 31 000 6204  |
| Specification      | Han HsB-SMC-FC-CRT-1.5 mm <sup>2</sup> / 16 AWG-Ag                                    |
| HARTING eCatalogue | <a href="https://b2b.harting.com/09310006204">https://b2b.harting.com/09310006204</a> |

### Identification

|                 |                      |
|-----------------|----------------------|
| Category        | Contacts             |
| Series          | Han <sup>®</sup> HsB |
| Type of contact | Crimp contact        |

### Version

|                       |                 |
|-----------------------|-----------------|
| Gender                | Female          |
| Manufacturing process | Turned contacts |

### Technical characteristics

|                         |                     |
|-------------------------|---------------------|
| Conductor cross-section | 1.5 mm <sup>2</sup> |
| Conductor cross-section | AWG 16              |
| Operating current       | ≤35 A               |
| Contact resistance      | ≤1 mΩ               |
| Stripping length        | 9.5 mm              |

### Material properties

|                             |  |
|-----------------------------|--|
| Material (contacts)         | Copper alloy   |
| Surface (contacts)          | Silver plated  |
| RoHS                        | compliant with exemption                               |
| RoHS exemptions             | 6(c): Copper alloy containing up to 4 % lead by weight |
| ELV status                  | compliant with exemption                               |
| China RoHS                  | 50   |
| REACH Annex XVII substances | No   |



Pushing Performance

## Material properties

|                                      |      |
|--------------------------------------|------|
| REACH ANNEX XIV substances           | No   |
| REACH SVHC substances                | Yes  |
| REACH SVHC substances                | Lead |
| California Proposition 65 substances | Yes  |
| California Proposition 65 substances | Lead |

## Specifications and approvals

|                |                         |
|----------------|-------------------------|
| Specifications | EN 60664-1<br>IEC 61984 |
|----------------|-------------------------|

## Commercial data

|                                |  |
|--------------------------------|--|
| Packaging size                 | 25   |
| Net weight                     | 2.59 g                                     |
| Country of origin              | Germany                                    |
| European customs tariff number | 85366990                                   |
| eCl@ss                         | 27440204 Contact for industrial connectors |

## X-ON Electronics

Largest Supplier of Electrical and Electronic Components

*Click to view similar products for [Standard Circular Contacts](#) category:*

*Click to view products by [HARTING](#) manufacturer:*

Other Similar products are found below :

[RC16M23J](#) [133780-1](#) [RM20M13D28](#) [RM24M9D28](#) [MS3474W10-6P L/C](#) [ELVP16100E](#) [164-901-CD](#) [EN3545007SCE](#)

[BV002BSQ20049CZ](#) [BV002SSQ160404CZ](#) [1900ND05S1B00B](#) [192900-0061](#) [192900-0575](#) [192900-0718](#) [166566-1](#) [1900ND04S1X00D](#)

[192900-0058](#) [192900-0309](#) [ST-JL05-16S-C3-100](#) [ST-JL05-20S-C1-100](#) [ST-JL05-20S-C2-100](#) [T01-CRIMP-S03](#) [APK-SA16A07-002](#) [CONT-](#)

[JL05-08S-C2-10](#) [RC16M-23T](#) [RFD26L-1D28](#) [BV002ASJ16049CW](#) [JN1-22-20S-R-PKG100](#) [031-50565](#) [ELFH08251](#) [ELFP0641GE](#)

[SJS861301M](#) [ST-JL05-16S-C1-100](#) [ST-JL05-20P-C1-100](#) [82911466K](#) [ESLM03200](#) [192991-0087](#) [192900-0570](#) [ELFH07251](#) [44-104-10003-](#)

[02](#) [T3P16FC3LZ](#) [ST-JL05-16S-C2-3500](#) [ZP-4016-10NF](#) [CONT-JL05-12P-C1-10](#) [RM20M12G8D28](#) [031-50676](#) [12115010110](#) [RJFTVC2MG](#)

[CAP-DACMDPC2](#) [031-50675-002](#)