

Han PP PFT met. circular Bulkhead Cat.6

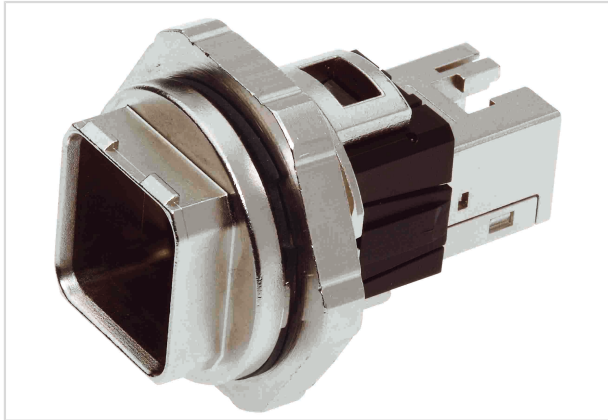


Image is for illustration purposes only. Please refer to product description.

Part number	09 35 225 0312
Specification	Han PP PFT met. circular Bulkhead Cat.6
HARTING eCatalogue	https://b2b.harting.com/09352250312

Identification

Category	Connectors
Series	Han® PushPull (V14)
Identification	RJ45
Element	Panel feed trough set
Specification	AIDA compliant
Features	Intuitive locking mechanism

Version

Shielding	Fully shielded, 360° shielding contact
Number of contacts	8
Fixing	Screwable to cover plates
Locking type	PushPull
Pack contents	inkl. bulkhead mounted housing for circular panel cut out, flat seal and HARTING RJ Industrial® 10G RJ45 bulkhead

Technical characteristics

Conductor cross-section	0.22 ... 0.32 mm ² Stranded 0.26 ... 0.32 mm ² Solid
Rated current	1.75 A
Rated voltage	50 V
Transmission characteristics	Cat. 6 Class E up to 250 MHz



Pushing Performance

Technical characteristics

Data rate	10 Mbit/s
	100 Mbit/s
	1 Gbit/s
	2.5 Gbit/s
	5 Gbit/s
	10 Gbit/s
Limiting temperature	-40 ... +70 °C
Mating cycles	≥750
Degree of protection acc. to IEC 60529	IP65
	IP67

Material properties

Surface (contacts)	Au over Ni Mating side
Material (hood/housing)	Zinc die-cast
Surface (hood/housing)	Nickel plated
Material flammability class acc. to UL 94	V-0
RoHS	compliant with exemption
RoHS exemptions	6(c): Copper alloy containing up to 4 % lead by weight
ELV status	compliant with exemption
China RoHS	50
REACH Annex XVII substances	No
REACH ANNEX XIV substances	No
REACH SVHC substances	Yes
REACH SVHC substances	Lead
California Proposition 65 substances	Yes
California Proposition 65 substances	Nickel
	Lead
	Antimony trioxide

Specifications and approvals

Specifications	IEC 61076-3-117 Variant 14 (V14)
	IEC 60603-7 Mating face
	EN 45545-2 R22: HL1, HL2, HL3
	EN 45545-2 R23: HL1, HL2, HL3
Approvals	DNV GL
UL / CSA	UL 1977 ECBT2.E102079
	CSA-C22.2 No. 182.3 ECBT8.E102079



Pushing Performance

Specifications and approvals

PROFINET	Yes
----------	-----

Commercial data

Packaging size	1
Net weight	46.64 g
Country of origin	Germany
European customs tariff number	85366990
eCl@ss	27440101 Rectangular connectors (set)

X-ON Electronics

Largest Supplier of Electrical and Electronic Components

Click to view similar products for [Modular Connectors / Ethernet Connectors](#) category:

Click to view products by [HARTING](#) manufacturer:

Other Similar products are found below :

[8949-H88/06BLKA/SN](#) [74441-0010/BKN](#) [MP1010RX-1000](#) [MP44RX-1000](#) [PHJ-4P4C-1-V-4](#) [PHP-6P6C-5](#) [GAX-3-66](#) [GAX-8-62](#) [GDCX-PA-66-50](#) [GDCX-PN-64](#) [GDCX-PN-66](#) [GDCX-PN-66-50](#) [GDLX-A-66](#) [GDLX-N-66](#) [GDLX-S-66](#) [GDLX-S-88K](#) [GDTX-S-88-50](#) [GDX-PA-1010](#) [GLX-N-1010M-BLK](#) [GLX-S-88M-BLK](#) [GMX-N-1010](#) [GMX-S-1010](#) [GMX-S-66](#) [GMX-SMT4-N-88](#) [GPX-2-64](#) [GSGX-N-2-88](#) [GSGX-N-4-88](#) [GSX-NS2-88-3.05-50](#) [PT-108A-8C-UL](#) [PT-J951-8C](#) [PTS-J531-8CS-50UL](#) [1-1775629-2](#) [A-2014-0-4](#) [GWLX-S-88-GR](#) [GWLX-S9-88-YG](#) [DC-1021-8-WH-6](#) [1300530003](#) [1324640-4](#) [RJ11FTVC2G](#) [RJ11FTVC2N](#) [RJFTVX2SA1G](#) [132764-001](#) [1413235](#) [MP88X-1000](#) [MPS88RX-5000](#) [MRJR-5481-0F2](#) [E5288-S000K3-L](#) [E5908-15A242-L](#) [155302-001](#) [AX100653](#)