

Han PP PFT metal rectangular QL power

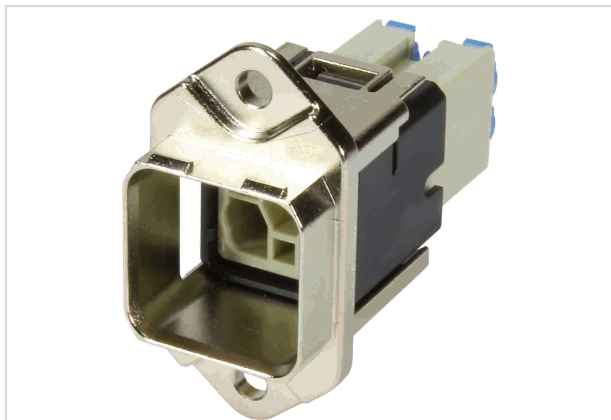


Image is for illustration purposes only. Please refer to product description.

Part number	09 35 232 0311
Specification	Han PP PFT metal rectangular QL power
HARTING eCatalogue	https://b2b.harting.com/09352320311

Identification

Category	Connectors
Series	Han® PushPull (V14)
Identification	Power
Element	Panel feed trough set
Specification	Rectangular panel cut out
Features	Intuitive locking mechanism

Version

Termination method	Han-Quick Lock® termination
Shielding	Unshielded
Number of contacts	5
Locking type	PushPull
Pack contents	incl. bulkhead mounted housing and male insert

Technical characteristics

Conductor cross-section	0.5 ... 2.5 mm ²
Conductor cross-section	AWG 24 ... AWG 12
Rated current	16 A
Rated voltage conductor-earth	400 V
Rated voltage conductor-conductor	690 V
Rated impulse voltage	6 kV
Pollution degree	2
Rated voltage acc. to UL	600 V



Pushing Performance

Technical characteristics

Limiting temperature	-40 ... +70 °C
Mating cycles	≥500
Degree of protection acc. to IEC 60529	IP65 IP67
Vibration resistance	5-150 Hz, 5 g, 0.35 mm, 2h/axis
Shock resistance	5 g / 30 ms, 3 shocks / axis and direction

Material properties

Material (contacts)	Copper alloy
Surface (contacts)	Silver plated
Material (hood/housing)	Zinc die-cast
Surface (hood/housing)	Nickel plated
Material flammability class acc. to UL 94	V-0
RoHS	compliant with exemption
RoHS exemptions	6(c): Copper alloy containing up to 4 % lead by weight
ELV status	compliant with exemption
China RoHS	50
REACH Annex XVII substances	No
REACH ANNEX XIV substances	No
REACH SVHC substances	Yes
REACH SVHC substances	Lead
California Proposition 65 substances	Yes
California Proposition 65 substances	Nickel Lead Naphthalene

Specifications and approvals

Specifications	IEC 61076-3-118 EN 45545-2 R22: HL1, HL2, HL3 EN 45545-2 R23: HL1, HL2, HL3
Approvals	DNV GL
UL / CSA	UL 1977 ECBT2.E235076 CSA-C22.2 No. 182.3 ECBT8.E235076

Commercial data

Packaging size	1
----------------	---

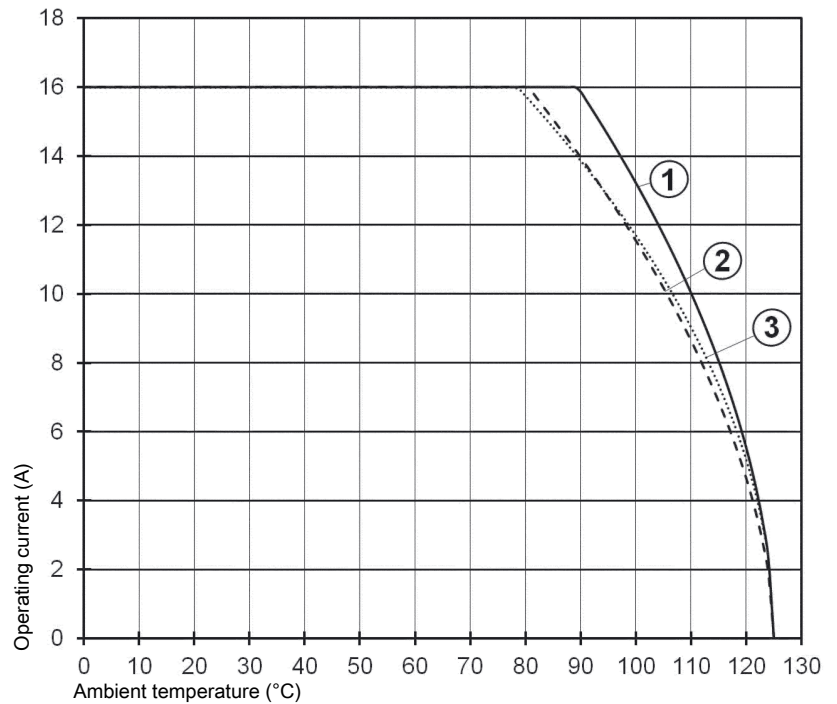
Commercial data

Net weight	31.74 g
Country of origin	Germany
European customs tariff number	85366990
eCl@ss	27440101 Rectangular connectors (set)

Current carrying capacity

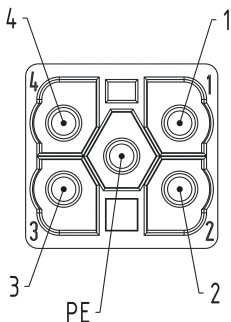
The current carrying capacity of the connectors is limited by the thermal load capability of the contact element material including the connections and the insulating parts. The derating curve is therefore valid for currents which flow constantly (non-intermittent) through each contact element of the connector evenly, without exceeding the allowed maximum temperature.

Measuring and testing techniques acc. to IEC 60512-5-2



- ① Crimp termination
 - ② Han-Quick Lock[®] termination
 - ③ Solder termination
- Conductor cross-section 2.5 mm²

Mating face



X-ON Electronics

Largest Supplier of Electrical and Electronic Components

Click to view similar products for [Heavy Duty Power Connectors](#) category:

Click to view products by [HARTING](#) manufacturer:

Other Similar products are found below :

[647757-1](#) [6643411-1](#) [6646058-2](#) [6646137-1](#) [6646138-1](#) [6646608-1](#) [6646786-1](#) [6646940-1](#) [6651091-1](#) [6651525-1](#) [6651529-1](#) [6651788-1](#)
[696475-1](#) [702-32-01109](#) [703-25-02205](#) [73000005059](#) [73000005642](#) [73080254296](#) [73080255059](#) [73080965046](#) [765-15-0080A](#)
[765-16-0080B](#) [765-18-0080D](#) [902-77-02113](#) [PS00/A0620/6300](#) [1221200000](#) [129-1J](#) [1409400](#) [E6374G1](#) [e6389g2](#) [157-43GW8](#) [MS3117-](#)
[14AC](#) [1643543-1](#) [1650540-1](#) [1651811-2](#) [1766260-1](#) [1766282-1](#) [1766966-1](#) [1791340000](#) [NLDFT-3-BL-L-S120-M40A](#) [NLDFT-N-W-L-](#)
[C240-M40B](#) [1926015-1](#) [NLS-N-W-C240-M40B](#) [2-1589900-8](#) [2199314-1](#) [KA8102](#) [9300480317](#) [29131](#) [294-0091-01100](#) [296-0040-01100](#)