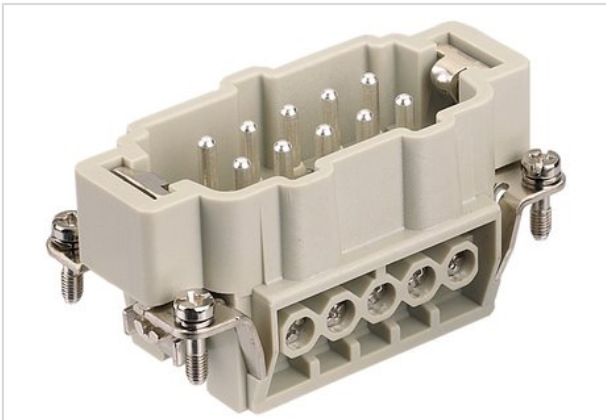


Han 10Ex-M-s



| | |
|--------------------|---|
| Part number | 09 36 010 2601 |
| Specification | Han 10Ex-M-s |
| HARTING eCatalogue | https://b2b.harting.com/09360102601 |

Identification

| | |
|----------|---------------------|
| Category | Inserts |
| Series | Han [®] Ex |

Version

| | |
|--------------------|---|
| Termination method | Screw termination |
| Gender | Male |
| Size | 10 B |
| Number of contacts | 10 |
| PE contact | Yes |
| Details | ATTENTION! Only to be used with Han [®] Ex hoods and housings! |

Technical characteristics

| | |
|-------------------------|------------------------------|
| Conductor cross-section | 0.75 ... 2.5 mm ² |
| Rated current | 16 A |
| Rated voltage | 90 V |
| Insulation resistance | >10 ¹⁰ Ω |
| Contact resistance | ≤1 mΩ |
| Limiting temperature | -20 ... +40 °C |
| Tightening torque | 0.5 Nm |
| Mating cycles | ≥500 |

Material properties

| | |
|-------------------|------------------------|
| Material (insert) | Polycarbonate (PC) |
| Colour (insert) | RAL 7032 (pebble grey) |



Pushing Performance

Material properties

| | |
|---|--|
| Material (contacts) | Copper alloy |
| Surface (contacts) | Silver plated |
| Material flammability class acc. to UL 94 | V-0 |
| RoHS | compliant with exemption |
| RoHS exemptions | 6(c): Copper alloy containing up to 4 % lead by weight |
| ELV status | compliant with exemption |
| China RoHS | 50 |
| REACH Annex XVII substances | No |
| REACH ANNEX XIV substances | No |
| REACH SVHC substances | Yes |
| REACH SVHC substances | Lead |

Commercial data

| | |
|--------------------------------|---|
| Packaging size | 1 |
| Net weight | 64.3 g |
| Country of origin | Germany |
| European customs tariff number | 85389099 |
| eCl@ss | 27440205 Contact insert for industrial connectors |

X-ON Electronics

Largest Supplier of Electrical and Electronic Components

Click to view similar products for [Heavy Duty Power Connectors](#) category:

Click to view products by [HARTING](#) manufacturer:

Other Similar products are found below :

[1424439](#) [1424438](#) [09330062652](#) [2-8675P1](#) [580129-2](#) [605601-1](#) [6340G1](#) [6341G1](#) [6360G1](#) [6373G1](#) [6374g2](#) [6396G1](#) [647757-1](#) [66394-4](#)
[6643411-1](#) [6646058-2](#) [6646137-1](#) [6646138-1](#) [6646348-1](#) [6646479-1](#) [6646608-1](#) [6646786-1](#) [6646940-1](#) [6651091-1](#) [6651525-1](#) [6651529-1](#)
[6651778-1](#) [6651788-1](#) [696465-1](#) [696475-1](#) [73000005059](#) [73000005349](#) [73000005642](#) [73080255059](#) [73080965046](#) [765-15-0080A](#)
[765-16-0080B](#) [789.700-44](#) [789.700-54](#) [80-1010](#) [80-9](#) [827381-1](#) [829992-1](#) [902-77-02113](#) [PL00U-301-10D10](#) [PM103MOOLOO](#)
[PM16S1620S32-50](#) [PM212MOOLOO](#) [PM309FOOLOO](#) [PM324FOOLCH](#)