

Han K 4/2 Pin Male Insert

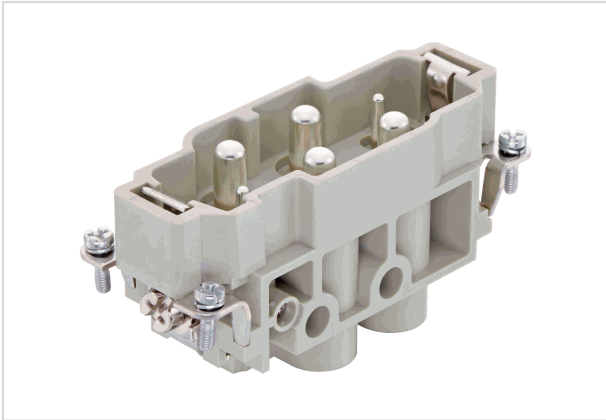


Image is for illustration purposes only. Please refer to product description.

| | |
|--------------------|---|
| Part number | 09 38 006 2601 |
| Specification | Han K 4/2 Pin Male Insert |
| HARTING eCatalogue | https://b2b.harting.com/09380062601 |

Identification

| | |
|----------------|------------------------|
| Category | Inserts |
| Series | Han-Com [®] |
| Identification | Han [®] K 4/2 |

Version

| | |
|--------------------|--------------------------------|
| Termination method | Screw termination |
| Gender | Male |
| Size | 16 B |
| Number of contacts | 4 |
| further contacts | + 2 additional signal contacts |
| PE contact | Yes |

Technical characteristics

| | |
|--------------------------------|------------------------------------|
| Conductor cross-section | 1.5 ... 16 mm ² |
| | 0.5 ... 2.5 mm ² Signal |
| Rated current | 80 A |
| Rated voltage | 830 V |
| Rated impulse voltage | 8 kV |
| Pollution degree | 3 |
| Rated current (signal) | 16 A |
| Rated voltage (signal) | 400 V |
| Rated impulse voltage (signal) | 6 kV |
| Pollution degree (signal) | 3 |



Pushing Performance

Technical characteristics

| | |
|------------------------------------|------------------------------|
| Rated current acc. to UL | 80 A |
| Rated voltage acc. to UL | 600 V |
| Rated current acc. to UL (signal) | 16 A |
| Rated voltage acc. to UL (signal) | 600 V |
| Rated current acc. to CSA | 80 A |
| Rated voltage acc. to CSA | 300 V |
| Rated current acc. to CSA (signal) | 16 A |
| Rated voltage acc. to CSA (signal) | 300 V |
| Insulation resistance | $>10^{10} \Omega$ |
| Contact resistance | $\leq 0.3 \text{ m}\Omega$ |
| Contact resistance, signal area | $\leq 1 \text{ m}\Omega$ |
| Stripping length | 14 mm |
| | 7.5 mm Signal |
| Tightening torque | 1.2 Nm @ 1.5 mm ² |
| | 2 Nm @ 2.5 mm ² |
| | 3 Nm @ 4 mm ² |
| | 3 Nm @ 6 mm ² |
| | 3 Nm @ 10 mm ² |
| | 3 Nm @ 16 mm ² |
| | 0.5 Nm Signal |
| Limiting temperature | -40 ... +125 °C |
| Mating cycles | ≥ 500 |

Material properties

| | |
|---|--|
| Material (insert) | Polycarbonate (PC) |
| Colour (insert) | RAL 7032 (pebble grey) |
| Material (contacts) | Copper alloy |
| Surface (contacts) | Silver plated |
| Material flammability class acc. to UL 94 | V-0 |
| RoHS | compliant with exemption |
| RoHS exemptions | 6(c): Copper alloy containing up to 4 % lead by weight |
| ELV status | compliant with exemption |
| China RoHS | 50 |
| REACH Annex XVII substances | No |
| REACH ANNEX XIV substances | No |
| REACH SVHC substances | Yes |



Pushing Performance

Material properties

| | |
|--------------------------------------|--------------------------------------|
| REACH SVHC substances | Lead |
| ECHA SCIP number | 5dbb3851-b94e-4e88-97a1-571845975242 |
| California Proposition 65 substances | Yes |
| California Proposition 65 substances | Lead |

Specifications and approvals

| | |
|----------------|--|
| Specifications | EN 60664-1 IEC 61984 |
| Approvals | DNV GL |
| UL / CSA | UL 1977 ECBT2.E235076 CSA-C22.2 No. 182.3 ECBT8.E235076 |

Commercial data

| | |
|--------------------------------|---|
| Packaging size | 1 |
| Net weight | 116 g |
| Country of origin | Romania |
| European customs tariff number | 85366990 |
| eCl@ss | 27440205 Contact insert for industrial connectors |

X-ON Electronics

Largest Supplier of Electrical and Electronic Components

Click to view similar products for [Heavy Duty Power Connectors](#) category:

Click to view products by [HARTING](#) manufacturer:

Other Similar products are found below :

[647757-1](#) [6643411-1](#) [6646058-2](#) [6646137-1](#) [6646138-1](#) [6646479-1](#) [6646608-1](#) [6646786-1](#) [6646940-1](#) [6651091-1](#) [6651525-1](#) [6651529-1](#)
[6651788-1](#) [696475-1](#) [73000005059](#) [73000005642](#) [765-15-0080A](#) [765-16-0080B](#) [829992-1](#) [902-77-02113](#) [129-1J](#) [AN0024023](#) [E6374G1](#)
[e6389g2](#) [157-43GW8](#) [MS3117-14AC](#) [1643543-1](#) [1650540-1](#) [1651811-2](#) [1766260-1](#) [1766282-1](#) [1766966-1](#) [1791340000](#) [NLDFT-3-BL-L-](#)
[S120-M40A](#) [NLDFT-N-W-L-C240-M40B](#) [NLS-2-R-C240-M40B](#) [NLS-N-W-C240-M40B](#) [NPS-3-BL-T6](#) [1986615-1](#) [2-1589900-8](#) [2199314-1](#)
[KA8102](#) [9300480317](#) [SBS50BRN#6](#) [29131](#) [29652](#) [1646905-1](#) [1648320-1](#) [1648582-1](#) [1650195-2](#)