

Han K4/4-M 10-22mm² berührsicher

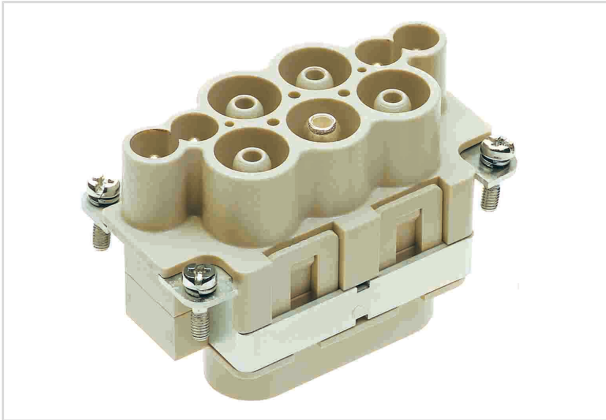


Image is for illustration purposes only. Please refer to product description.

Part number	09 38 008 2602
Specification	Han K4/4-M 10-22mm ² berührsicher
HARTING eCatalogue	https://b2b.harting.com/09380082602

Identification

Category	Inserts
Series	Han-Com [®]
Identification	Han [®] K 4/4

Version

Termination method	Axial screw termination / cage-clamp termination
Gender	Male
Size	10 B
Number of contacts	4
further contacts	+ 4 additional signal contacts
PE contact	Yes
Details	Finger safe

Technical characteristics

Conductor cross-section	10 ... 22 mm ² 0.14 ... 2.5 mm ² Signal
Wire outer diameter	≤8.9 mm ≤11 mm @ 22 mm ²
Rated current	63 A
Rated voltage	690 V
Rated impulse voltage	8 kV
Pollution degree	3
Rated current (signal)	16 A



Pushing Performance

Technical characteristics

Rated voltage (signal)	250 V
Rated impulse voltage (signal)	4 kV
Pollution degree (signal)	3
Rated current acc. to UL	63 A
Rated voltage acc. to UL	600 V
Rated current acc. to UL (signal)	16 A
Rated voltage acc. to UL (signal)	230 V
Rated current acc. to CSA	63 A
Rated voltage acc. to CSA	600 V
Rated current acc. to CSA (signal)	16 A
Rated voltage acc. to CSA (signal)	230 V
Insulation resistance	>10 ¹⁰ Ω
Contact resistance	≤0.5 mΩ
Contact resistance, signal area	≤3 mΩ
Stripping length	11 ... 12 mm
	13 ... 14 mm @ 22 mm ²
	7 ... 9 mm Signal
Tightening torque	3 Nm @ 10 mm ²
	4 Nm @ 16 mm ²
	4 Nm @ 22 mm ²
Limiting temperature	-40 ... +125 °C
Mating cycles	≥500

Material properties

Material (insert)	Polycarbonate (PC)
Colour (insert)	RAL 7032 (pebble grey)
Material (contacts)	Copper alloy
Surface (contacts)	Silver plated
Material flammability class acc. to UL 94	V-0
RoHS	compliant with exemption
RoHS exemptions	6(a) / 6(a)-I: Lead as an alloying element in steel for machining purposes and in galvanised steel containing up to 0,35 % lead by weight / Lead as an alloying element in steel for machining purposes containing up to 0,35 % lead by weight and in batch hot dip galvanised steel components containing up to 0,2 % lead by weight
	6(c): Copper alloy containing up to 4 % lead by weight
ELV status	compliant with exemption



Pushing Performance

Material properties

China RoHS	50
REACH Annex XVII substances	No
REACH ANNEX XIV substances	No
REACH SVHC substances	Yes
REACH SVHC substances	Lead Potassium 1,1,2,2,3,3,4,4,4-nonafluorobutane-1-sulphonate
ECHA SCIP number	1e38d35d-d1be-4585-8e03-95faccd739bf
California Proposition 65 substances	Yes
California Proposition 65 substances	Nickel Lead

Specifications and approvals

Specifications	EN 60664-1 IEC 61984
Approvals	DNV GL
UL / CSA	UL 1977 ECBT2.E235076 CSA-C22.2 No. 182.3 ECBT8.E235076

Commercial data

Packaging size	1
Net weight	119.56 g
Country of origin	Germany
European customs tariff number	85366990
eCl@ss	27440205 Contact insert for industrial connectors

X-ON Electronics

Largest Supplier of Electrical and Electronic Components

Click to view similar products for [Heavy Duty Power Connectors](#) category:

Click to view products by [HARTING](#) manufacturer:

Other Similar products are found below :

[647757-1](#) [6643411-1](#) [6646058-2](#) [6646137-1](#) [6646138-1](#) [6646479-1](#) [6646608-1](#) [6646786-1](#) [6646940-1](#) [6651091-1](#) [6651525-1](#) [6651529-1](#)
[6651788-1](#) [696475-1](#) [73000005059](#) [73000005642](#) [765-15-0080A](#) [765-16-0080B](#) [829992-1](#) [902-77-02113](#) [129-1J](#) [AN0024023](#) [E6374G1](#)
[e6389g2](#) [157-43GW8](#) [MS3117-14AC](#) [1643543-1](#) [1650540-1](#) [1651811-2](#) [1766260-1](#) [1766282-1](#) [1766966-1](#) [1791340000](#) [NLDFT-3-BL-L-](#)
[S120-M40A](#) [NLDFT-N-W-L-C240-M40B](#) [NLS-2-R-C240-M40B](#) [NLS-N-W-C240-M40B](#) [NPS-3-BL-T6](#) [1986615-1](#) [2-1589900-8](#) [2199314-1](#)
[KA8102](#) [9300480317](#) [SBS50BRN#6](#) [29131](#) [29652](#) [1646905-1](#) [1648320-1](#) [1648582-1](#) [1650195-2](#)