

Han K 32-24-M-C

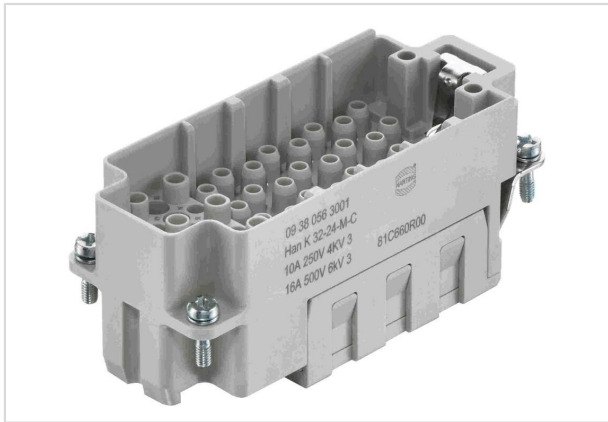


Image is for illustration purposes only. Please refer to product description.

Part number	09 38 056 3001
Specification	Han K 32-24-M-C
HARTING eCatalogue	https://b2b.harting.com/09380563001

Identification

Category	Inserts
Series	Han-Com®
Identification	Han® K 32/24

Version

Termination method	Crimp termination
Gender	Male
Size	16 B
Number of contacts	56
Number of signal contacts	24
Number of power contacts	32
PE contact	Yes
Details	Please order crimp contacts separately. 32x Han E® 24x Han D®

Technical characteristics

Conductor cross-section	0.14 ... 2.5 mm ² Signal 0.14 ... 4 mm ² Power
Rated current (signal)	10 A
Rated voltage (signal)	250 V
Rated impulse voltage (signal)	4 kV
Pollution degree (signal)	3



Pushing Performance
Since 1945

Technical characteristics

Rated current (power)	16 A
Rated voltage (power)	500 V
Rated impulse voltage (power)	6 kV
Pollution degree (power)	3
Insulation resistance	$>10^{10} \Omega$
Limiting temperature	-40 ... +125 °C
Mating cycles	≥ 500

Material properties

Material (insert)	Polycarbonate (PC)
Colour (insert)	RAL 7032 (pebble grey)
Material flammability class acc. to UL 94	V-0

Specifications and approvals

Specifications	IEC 60664-1 IEC 61984
Approvals	DNV GL

Commercial data

Packaging size	1
Net weight	57.4 g
Country of origin	China
European customs tariff number	85366990
GTIN	5713140186477
eCl@ss	27440205 Contact insert for industrial connectors

X-ON Electronics

Largest Supplier of Electrical and Electronic Components

Click to view similar products for [Circular Metric Connectors](#) category:

Click to view products by [HARTING](#) manufacturer:

Other Similar products are found below :

[600X518037X](#) [MA1EAF1200](#) [6STD15PCR99B70A](#) [8R4000A16M020](#) [8R5000A16M005](#) [1200910008](#) [1300140094](#) [130203-0054](#)
[1300150099](#) [1-3637-600-5205](#) [1A4000-348](#) [8R4006A16M010](#) [8R5006A18A120](#) [1604232](#) [1R3006A20M005](#) [RF-12P1N8A80DU](#) [RF-](#)
[12P1N8A90DU](#) [TBF-20-11PS](#) [41-01016](#) [41-40011](#) [41-40017](#) [42-01015](#) [4-22279-4](#) [4-22281-1](#) [4-22284-9](#) [43-00002](#) [43-01028](#) [43-01166](#) [43-](#)
[01209](#) [43-10041](#) [41-40005](#) [41-40016](#) [43-00132](#) [43-00161](#) [43-00343](#) [600X518050X](#) [SACC-DSI-FS-5P-PG9-L180 SC](#) [8R4006A16A120](#)
[8R4000A16M010](#) [1R3004A20A1201](#) [6-22279-3](#) [N03FA03144](#) [1300140077](#) [41-01117](#) [XS2RD4265](#) [XS2R-D426-1](#) [XS8A-0441](#) [859RD04-](#)
[103R004](#) [860RD04-113R004](#) [860-X08-213R004](#)