

## Han K 32-55-M-C

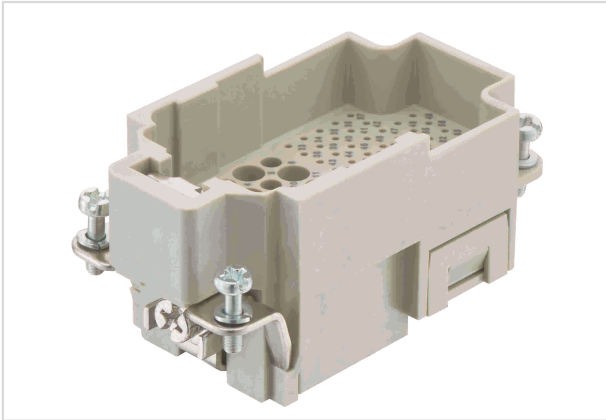


Image is for illustration purposes only. Please refer to product description.

|                    |   |
|--------------------|---|
| Part number        | 09 38 087 3001  |
| Specification      | Han K 32-55-M-C   |
| HARTING eCatalogue | <a href="https://b2b.harting.com/09380873001">https://b2b.harting.com/09380873001</a> |

### Identification

|                |                          |
|----------------|--------------------------|
| Category       | Inserts                  |
| Series         | Han-Com <sup>®</sup>     |
| Identification | Han <sup>®</sup> K 32/55 |

### Version

|                           |  |
|---------------------------|--|
| Termination method        | Crimp termination  |
| Gender                    | Male   |
| Size                      | 10 B   |
| Number of contacts        | 87   |
| Number of signal contacts | 55   |
| Number of power contacts  | 32   |
| PE contact                | Yes  |
| Details                   | Please order crimp contacts separately.<br>32x Han D <sup>®</sup><br>55x D-Sub |

### Technical characteristics

|                                |  |
|--------------------------------|--|
| Conductor cross-section        | 0.09 ... 0.52 mm <sup>2</sup> Signal<br>0.14 ... 2.5 mm <sup>2</sup> Power |
| Rated current (signal)         | 4 A  |
| Rated voltage (signal)         | 50 V   |
| Rated impulse voltage (signal) | 0.8 kV   |
| Pollution degree (signal)      | 2  |
| Rated current (power)          | 10 A   |



Pushing Performance

## Technical characteristics

|                               |  |
|-------------------------------|--|
| Rated voltage (power)         | 250 V  |
| Rated impulse voltage (power) | 4 kV   |
| Pollution degree (power)      | 2  |
| Rated voltage acc. to UL      | 600 V @ Power contacts<br>30 V @ Signal contacts |
| Insulation resistance         | $>10^{10} \Omega$                                |
| Limiting temperature          | -40 ... +125 °C                                  |
| Mating cycles                 | $\geq 500$                                       |

## Material properties

|   |                        |
|---|------------------------|
| Material (insert)                         | Polycarbonate (PC)     |
| Colour (insert)                           | RAL 7032 (pebble grey) |
| Material flammability class acc. to UL 94 | V-0                    |
| RoHS                                      | compliant              |
| ELV status                                | compliant              |
| China RoHS                                | e                      |
| REACH Annex XVII substances               | No                     |
| REACH ANNEX XIV substances                | No                     |
| REACH SVHC substances                     | No                     |
| California Proposition 65 substances      | Yes                    |
| California Proposition 65 substances      | Nickel<br>Lead         |

## Specifications and approvals

|                |  |
|----------------|--|
| Specifications | EN 60664-1<br>IEC 61984                                    |
| UL / CSA       | UL 1977 ECBT2.E235076<br>CSA-C22.2 No. 182.3 ECBT8.E235076 |

## Commercial data

|                                |          |
|--------------------------------|----------|
| Packaging size                 | 1        |
| Net weight                     | 42 g     |
| Country of origin              | China    |
| European customs tariff number | 85366990 |



Pushing Performance

## Commercial data

eCl@ss

27440205 Contact insert for industrial connectors

## X-ON Electronics

Largest Supplier of Electrical and Electronic Components

*Click to view similar products for [Heavy Duty Power Connectors](#) category:*

*Click to view products by [HARTING](#) manufacturer:*

Other Similar products are found below :

[647757-1](#) [6643411-1](#) [6646058-2](#) [6646137-1](#) [6646138-1](#) [6646479-1](#) [6646608-1](#) [6646786-1](#) [6646940-1](#) [6651091-1](#) [6651525-1](#) [6651529-1](#)  
[6651788-1](#) [696475-1](#) [73000005059](#) [73000005642](#) [765-15-0080A](#) [765-16-0080B](#) [829992-1](#) [902-77-02113](#) [129-1J](#) [AN0024023](#) [E6374G1](#)  
[e6389g2](#) [157-43GW8](#) [MS3117-14AC](#) [1643543-1](#) [1650540-1](#) [1651811-2](#) [1766260-1](#) [1766282-1](#) [1766966-1](#) [1791340000](#) [NLDFT-3-BL-L-](#)  
[S120-M40A](#) [NLDFT-N-W-L-C240-M40B](#) [NLS-2-R-C240-M40B](#) [NLS-N-W-C240-M40B](#) [NPS-3-BL-T6](#) [1986615-1](#) [2-1589900-8](#) [2199314-1](#)  
[KA8102](#) [9300480317](#) [SBS50BRN#6](#) [29131](#) [29652](#) [1646905-1](#) [1648320-1](#) [1648582-1](#) [1650195-2](#)