

Han3M RJ45 Cat5 PFT 8p

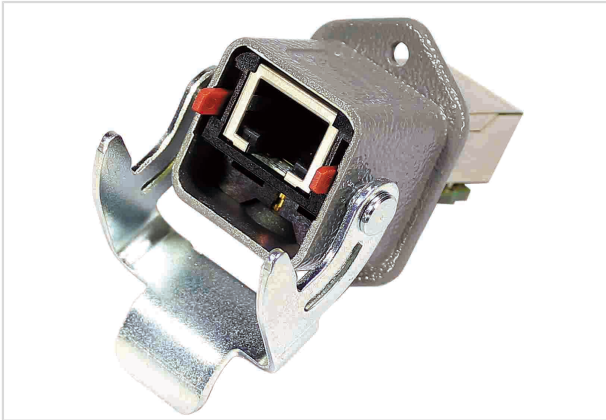


Image is for illustration purposes only. Please refer to product description.

Part number	09 45 215 1102
Specification	Han3M RJ45 Cat5 PFT 8p
HARTING eCatalogue	https://b2b.harting.com/09452151102

Identification

Category	Connectors
Series	RJ45
Element	Panel feed through
Specification	Straight

Version

Size	Han [®] 3 A
Shielding	Fully shielded, 360° shielding contact
Number of contacts	8
Fixing	Screwable in cover plates

Technical characteristics

Transmission characteristics	Cat. 5 Class D up to 100 MHz
Data rate	10 Mbit/s 100 Mbit/s 1 Gbit/s 2.5 Gbit/s
Limiting temperature	-40 ... +70 °C
Mating cycles	≥500
Degree of protection acc. to IEC 60529	IP65 IP67

Material properties

Material (hood/housing)	Zinc die-cast
-------------------------	---------------



Pushing Performance

Material properties

Surface (hood/housing)	Powder-coated
Colour (hood/housing)	Black
RoHS	compliant
ELV status	compliant
China RoHS	e
REACH Annex XVII substances	No
REACH ANNEX XIV substances	No
REACH SVHC substances	No
California Proposition 65 substances	Yes
California Proposition 65 substances	Nickel
California Proposition 65 substances	Lead
California Proposition 65 substances	Antimony trioxide
California Proposition 65 substances	Naphthalene

Specifications and approvals

Approvals	DNV GL
PROFINET	Yes

Commercial data

Packaging size	1
Net weight	55 g
Country of origin	Romania
European customs tariff number	85366990
eCl@ss	27440101 Rectangular connectors (set)

X-ON Electronics

Largest Supplier of Electrical and Electronic Components

Click to view similar products for [Modular Connectors / Ethernet Connectors](#) category:

Click to view products by [HARTING](#) manufacturer:

Other Similar products are found below :

[8949-H88/06BLKA/SN](#) [74441-0010/BKN](#) [MP1010RX-1000](#) [MP44RX-1000](#) [PHJ-4P4C-1-V-4](#) [PHP-6P6C-5](#) [GAX-3-66](#) [GAX-8-62](#) [GDCX-PA-66-50](#) [GDCX-PN-64](#) [GDCX-PN-66](#) [GDCX-PN-66-50](#) [GDLX-A-66](#) [GDLX-N-66](#) [GDLX-S-66](#) [GDLX-S-88K](#) [GDTX-S-88-50](#) [GDX-PA-1010](#) [GLX-N-1010M-BLK](#) [GLX-S-88M-BLK](#) [GMX-N-1010](#) [GMX-S-1010](#) [GMX-S-66](#) [GMX-SMT4-N-88](#) [GPX-2-64](#) [GSGX-N-2-88](#) [GSGX-N-4-88](#) [GSX-NS2-88-3.05-50](#) [PT-108A-8C-UL](#) [PT-J951-8C](#) [PTS-J531-8CS-50UL](#) [1-1775629-2](#) [A-2014-0-4](#) [GWLX-S-88-GR](#) [GWLX-S9-88-YG](#) [DC-1021-8-WH-6](#) [1300530003](#) [1324640-4](#) [RJ11FTVC2G](#) [RJ11FTVC2N](#) [RJFTVX2SA1G](#) [132764-001](#) [1413235](#) [MP88X-1000](#) [MPS88RX-5000](#) [MRJR-5481-0F2](#) [E5288-S000K3-L](#) [E5908-15A242-L](#) [155302-001](#) [AX100653](#)