

T1 Industrial Jack AH IP20

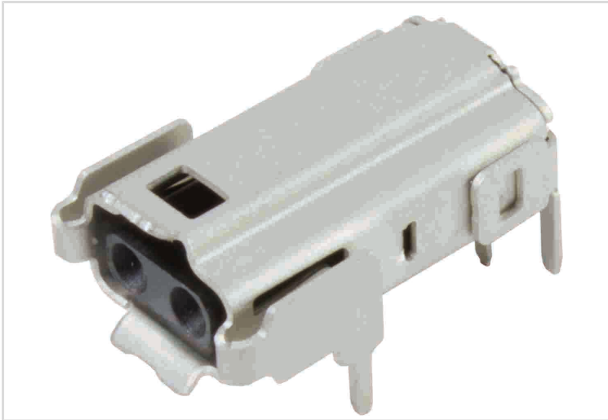


Image is for illustration purposes only. Please refer to product description.

Part number	09 45 281 2800
Specification	T1 Industrial Jack AH IP20
HARTING eCatalogue	https://b2b.harting.com/09452812800

Identification

Category	Connectors
Series	HARTING T1 Industrial
Element	PCB connector
Specification	Angled

Version

Termination method	THR connection
Shielding	Fully shielded, 360° shielding contact
Number of contacts	2
further contacts	+ shielding
Pack contents	275 pieces on reel

Technical characteristics

Rated current	4 A
Rated voltage	60 V DC
Transmission characteristics	600 MHz Bandwidth
Data rate	10 Mbit/s 100 Mbit/s 1 Gbit/s
Contact resistance	≤20 mΩ
Shielding resistance	≤100 mΩ
Limiting temperature	-40 ... +85 °C
Mating cycles	≥1,000
Degree of protection acc. to IEC 60529	IP20



Pushing Performance

Technical characteristics

Test voltage U_{DC}	1 kV (contact-contact) 2.25 kV (contact-ground)
Moisture Sensitivity Level (MSL)	1 acc. to ECA/IPC/JEDEC J-STD-020D
Process Sensitivity Level (PSL)	R0 acc. to ECA/IPC/JEDEC J-STD-020D

Material properties

RoHS	compliant
ELV status	compliant
China RoHS	e
REACH Annex XVII substances	No
REACH ANNEX XIV substances	No
REACH SVHC substances	No
California Proposition 65 substances	No

Specifications and approvals

Specifications	IEC 63171-6 IEEE 802.3bu (remote power supply over PoDL = Power over Data Line) IEEE 802.3cg (10BASE-T1) IEEE 802.3bw (100BASE-T1) IEEE 802.3bp (1000BASE-T1)
----------------	---

Commercial data

Packaging size	275
Net weight	4.8 g
Country of origin	Germany
European customs tariff number	85366990
eCl@ss	27460201 PCB connector (board connector)

X-ON Electronics

Largest Supplier of Electrical and Electronic Components

Click to view similar products for [Modular Connectors / Ethernet Connectors](#) category:

Click to view products by [HARTING](#) manufacturer:

Other Similar products are found below :

[8949-H88/06BLKA/SN](#) [74441-0010/BKN](#) [MP1010RX-1000](#) [MP44RX-1000](#) [PHP-6P6C-5](#) [GAX-3-66](#) [GAX-8-62](#) [GDCX-PA-66-50](#) [GDCX-PN-64](#) [GDCX-PN-66](#) [GDCX-PN-66-50](#) [GDLX-A-66](#) [GDLX-N-66](#) [GDLX-S-66](#) [GDLX-S-88K](#) [GDTX-S-88-50](#) [GDX-PA-1010](#) [GLX-N-1010M-BLK](#) [GLX-S-88M-BLK](#) [GMX-N-1010](#) [GMX-S-1010](#) [GMX-S-66](#) [GMX-SMT4-N-88](#) [GPX-2-64](#) [GSGX-N-2-88](#) [GSGX-N-4-88](#) [GSX-NS2-88-3.05](#) [GSX-NS2-88-3.05-50](#) [GSX-NS-88-3.05-50](#) [PT-108A-8C-UL](#) [PT-J951-8C](#) [PTS-J531-8CS-50UL](#) [1-1775629-2](#) [A-2014-0-4](#) [GWLX-S-88-GR](#) [GWLX-S9-88-YG](#) [DC-1021-8-WH-6](#) [1300530003](#) [1324640-4](#) [RJ11FTVC2G](#) [RJ11FTVC2N](#) [RJFTVX2SA1G](#) [132764-001](#) [1413235](#) [MP88X-1000](#) [MPS88RX-5000](#) [MRJR-5481-0F2](#) [E5288-S000K3-L](#) [E5908-15A242-L](#) [155302-001](#)