

HPP V4 RJ45 Cat5 EI-PFT 8p, metal

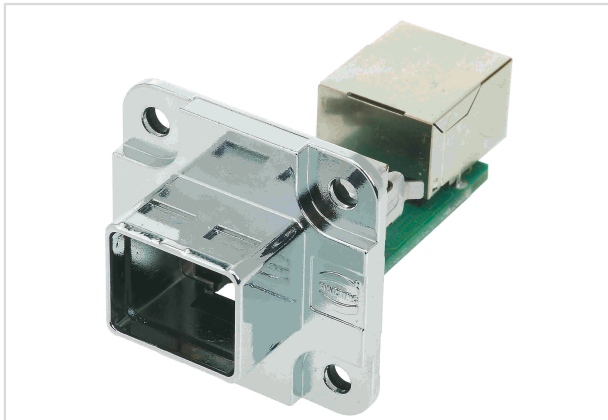


Image is for illustration purposes only. Please refer to product description.

Part number	09 45 295 1130
Specification	HPP V4 RJ45 Cat5 EI-PFT 8p, metal
HARTING eCatalogue	https://b2b.harting.com/09452951130

Identification

Category	Connectors
Series	HARTING PushPull (V4)
Identification	RJ45
Element	Panel feed trough set
Type of hood/housing	Bulkhead mounted housing
Description of hood/housing	EasyInstall

Version

Shielding	Fully shielded, 360° shielding contact
Number of contacts	5
Locking type	PushPull
Pack contents	incl. integrated seal, 2x RJ45-jack and board drillings for M3

Technical characteristics

Transmission characteristics	Cat. 5 Class D up to 100 MHz
Data rate	10 Mbit/s
	100 Mbit/s
	1 Gbit/s
Limiting temperature	-40 ... +70 °C
Mating cycles	≥750
Degree of protection acc. to IEC 60529	IP65

Material properties

Material (hood/housing)	Zinc die-cast
-------------------------	---------------



Pushing Performance

Material properties

Colour (hood/housing)	Silver
Material flammability class acc. to UL 94	V-0
RoHS	compliant
ELV status	compliant
China RoHS	e
REACH Annex XVII substances	No
REACH ANNEX XIV substances	No
REACH SVHC substances	No
California Proposition 65 substances	Yes
California Proposition 65 substances	Nickel Lead

Specifications and approvals

Specifications	IEC 61076-3-106 Variant 4 (V4)
Approvals	DNV GL

Commercial data

Packaging size	1
Net weight	34 g
Country of origin	Romania
European customs tariff number	85366990
eCl@ss	27440101 Rectangular connectors (set)

X-ON Electronics

Largest Supplier of Electrical and Electronic Components

Click to view similar products for [Modular Connectors](#) / [Ethernet Connectors](#) category:

Click to view products by [HARTING](#) manufacturer:

Other Similar products are found below :

[8949-H88/06BLKA/SN](#) [74441-0010/BKN](#) [MP1010RX-1000](#) [MP44RX-1000](#) [PHJ-4P4C-1-V-4](#) [PHP-6P6C-5](#) [GAX-3-66](#) [GAX-8-62](#) [GDCX-PA-66-50](#) [GDCX-PN-64](#) [GDCX-PN-66](#) [GDCX-PN-66-50](#) [GDLX-A-66](#) [GDLX-N-66](#) [GDLX-S-66](#) [GDLX-S-88K](#) [GDTX-S-88-50](#) [GDX-PA-1010](#) [GLX-N-1010M-BLK](#) [GLX-S-88M-BLK](#) [GMX-N-1010](#) [GMX-S-1010](#) [GMX-S-66](#) [GMX-SMT4-N-88](#) [GPX-2-64](#) [GSGX-N-2-88](#) [GSGX-N-4-88](#) [GSX-NS2-88-3.05-50](#) [PT-108A-8C-UL](#) [PT-J951-8C](#) [PTS-J531-8CS-50UL](#) [1-1775629-2](#) [A-2014-0-4](#) [GWLX-S-88-GR](#) [GWLX-S9-88-YG](#) [DC-1021-8-WH-6](#) [1300530003](#) [1324640-4](#) [RJ11FTVC2G](#) [RJ11FTVC2N](#) [RJFTVX2SA1G](#) [132764-001](#) [1413235](#) [MP88X-1000](#) [MPS88RX-5000](#) [MRJR-5481-0F2](#) [E5288-S000K3-L](#) [E5908-15A242-L](#) [155302-001](#) [AX100653](#)