

har-port RJ45 Cat.6; PFT

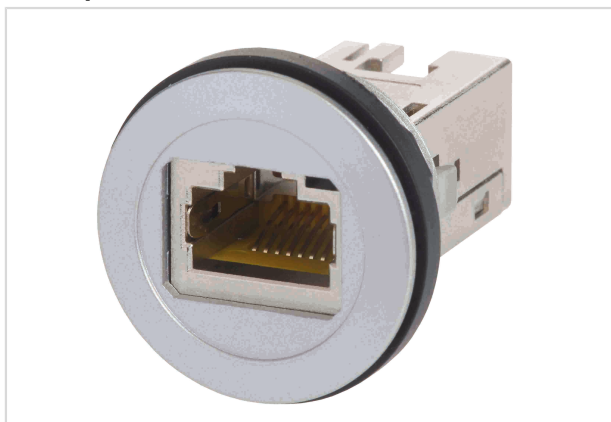


Image is for illustration purposes only. Please refer to product description.

Part number	09 45 452 1560
Specification	har-port RJ45 Cat.6; PFT
HARTING eCatalogue	https://b2b.harting.com/09454521560

Identification

Category	Connectors
Series	har-port
Element	Service interfaces
Specification	RJ45

Version

Shielding	Fully shielded, 360° shielding contact
Connection type	Jack to jack
Fixing	Screwable in cover plates

Technical characteristics

Transmission characteristics	Cat. 6 Class E up to 250 MHz
Data rate	10 Mbit/s 100 Mbit/s 1 Gbit/s 10 Gbit/s
Ambient temperature	-25 ... +70 °C
Mating cycles	≥750
Degree of protection acc. to IEC 60529	IP20

Material properties

Material (hood/housing)	Polyamide (PA)
Colour (hood/housing)	Silver
RoHS	compliant



Pushing Performance

Material properties

ELV status	compliant
China RoHS	e
REACH Annex XVII substances	No
REACH ANNEX XIV substances	No
REACH SVHC substances	No
California Proposition 65 substances	Yes
California Proposition 65 substances	Nickel
	Lead
	Antimony trioxide

Specifications and approvals

Specifications	EN 45545-2 R22: HL1, HL2, HL3 EN 45545-2 R23: HL1, HL2, HL3
Approvals	DNV GL
UL / CSA	UL 1863 DUXR2.E470046 CSA-C22.2 No. 182.4, No. 233-09 DUXR8.E470046
PROFINET	Yes

Commercial data

Packaging size	1
Net weight	25 g
Country of origin	Germany
European customs tariff number	85366990
eCl@ss	27060304 Appliance cord (data cable)

X-ON Electronics

Largest Supplier of Electrical and Electronic Components

Click to view similar products for [Modular Connectors](#) / [Ethernet Connectors](#) category:

Click to view products by [HARTING](#) manufacturer:

Other Similar products are found below :

[8949-H88/06BLKA/SN](#) [74441-0010/BKN](#) [MP1010RX-1000](#) [MP44RX-1000](#) [PHJ-4P4C-1-V-4](#) [PHP-6P6C-5](#) [GAX-3-66](#) [GAX-8-62](#) [GDCX-PA-66-50](#) [GDCX-PN-64](#) [GDCX-PN-66](#) [GDCX-PN-66-50](#) [GDLX-A-66](#) [GDLX-N-66](#) [GDLX-S-66](#) [GDLX-S-88K](#) [GDTX-S-88-50](#) [GDX-PA-1010](#) [GLX-N-1010M-BLK](#) [GLX-S-88M-BLK](#) [GMX-N-1010](#) [GMX-S-1010](#) [GMX-S-66](#) [GMX-SMT4-N-88](#) [GPX-2-64](#) [GSGX-N-2-88](#) [GSGX-N-4-88](#) [GSX-NS2-88-3.05-50](#) [PT-108A-8C-UL](#) [PT-J951-8C](#) [PTS-J531-8CS-50UL](#) [1-1775629-2](#) [A-2014-0-4](#) [GWLX-S-88-GR](#) [GWLX-S9-88-YG](#) [DC-1021-8-WH-6](#) [1300530003](#) [1324640-4](#) [RJ11FTVC2G](#) [RJ11FTVC2N](#) [RJFTVX2SA1G](#) [132764-001](#) [1413235](#) [MP88X-1000](#) [MPS88RX-5000](#) [MRJR-5481-0F2](#) [E5288-S000K3-L](#) [E5908-15A242-L](#) [155302-001](#) [AX100653](#)