

## RJ45 jack Cat.5 THT angled, EMC

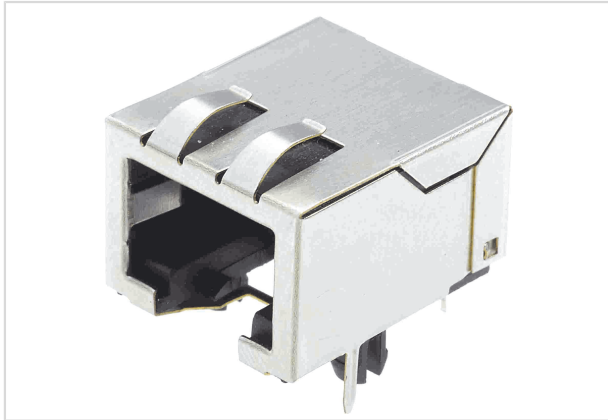


Image is for illustration purposes only. Please refer to product description.

Part number	09 45 551 1101
Specification	RJ45 jack Cat.5 THT angled, EMC
HARTING eCatalogue	<a href="https://b2b.harting.com/09455511101">https://b2b.harting.com/09455511101</a>

### Identification

Category	Connectors
Series	HARTING RJ Industrial®
Element	Female
Specification	RJ45 Angled With contact spring

### Version

Termination method	Wave soldering termination
Shielding	Fully shielded, 360° shielding contact
Number of contacts	8
Pack contents	Tray

### Technical characteristics

Rated current	1.5 A
Rated voltage	125 V
Transmission characteristics	Cat. 5 Class D up to 100 MHz
Data rate	10 Mbit/s 100 Mbit/s 1 Gbit/s 2.5 Gbit/s
Limiting temperature	-40 ... +85 °C
Mating cycles	≥750
Degree of protection acc. to IEC 60529	IP20



Pushing Performance

## Material properties

RoHS	compliant
ELV status	compliant
China RoHS	e
REACH Annex XVII substances	No
REACH ANNEX XIV substances	No
REACH SVHC substances	No
California Proposition 65 substances	Yes
California Proposition 65 substances	Nickel Lead

## Specifications and approvals

Approvals	DNV GL
UL / CSA	UL 1977 DUXR2.E254191 CSA-C22.2 No. 182.4, No. 233-09 DUXR8.E254191

## Commercial data

Packaging size	200
Net weight	4.74 g
Country of origin	Taiwan
European customs tariff number	85366990
eCl@ss	27460201 PCB connector (board connector)

## X-ON Electronics

Largest Supplier of Electrical and Electronic Components

*Click to view similar products for [Modular Connectors](#) / [Ethernet Connectors](#) category:*

*Click to view products by [HARTING](#) manufacturer:*

Other Similar products are found below :

[8949-H88/06BLKA/SN](#) [74441-0010/BKN](#) [MP1010RX-1000](#) [MP44RX-1000](#) [PHJ-4P4C-1-V-4](#) [PHP-6P6C-5](#) [GAX-3-66](#) [GAX-8-62](#) [GDCX-PA-66-50](#) [GDCX-PN-64](#) [GDCX-PN-66](#) [GDCX-PN-66-50](#) [GDLX-A-66](#) [GDLX-N-66](#) [GDLX-S-66](#) [GDLX-S-88K](#) [GDTX-S-88-50](#) [GDX-PA-1010](#) [GLX-N-1010M-BLK](#) [GLX-S-88M-BLK](#) [GMX-N-1010](#) [GMX-S-1010](#) [GMX-S-66](#) [GMX-SMT4-N-88](#) [GPX-2-64](#) [GSGX-N-2-88](#) [GSGX-N-4-88](#) [GSX-NS2-88-3.05-50](#) [PT-108A-8C-UL](#) [PT-J951-8C](#) [PTS-J531-8CS-50UL](#) [1-1775629-2](#) [A-2014-0-4](#) [GWLX-S-88-GR](#) [GWLX-S9-88-YG](#) [DC-1021-8-WH-6](#) [1300530003](#) [1324640-4](#) [RJ11FTVC2G](#) [RJ11FTVC2N](#) [RJFTVX2SA1G](#) [132764-001](#) [1413235](#) [MP88X-1000](#) [MPS88RX-5000](#) [MRJR-5481-0F2](#) [E5288-S000K3-L](#) [E5908-15A242-L](#) [155302-001](#) [AX100653](#)